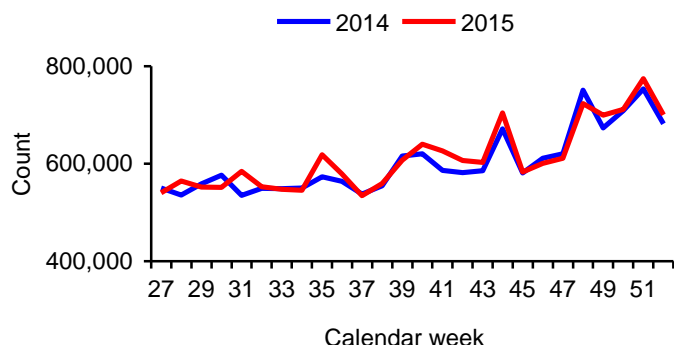


Insight

Coventry City Centre: 2nd Half-year 2016 Healthcheck review Jul-Dec 2015

Footfall



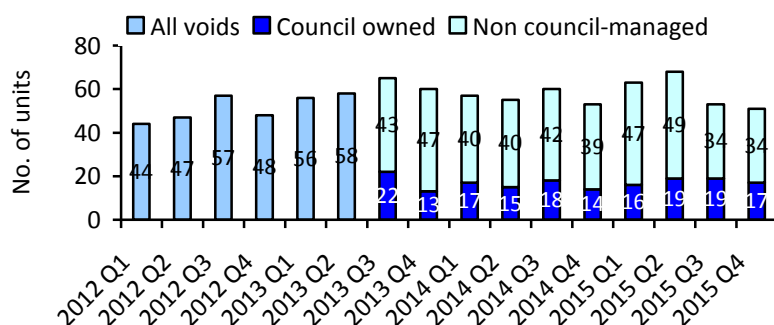
City centre footfall	Year-on-year performance					
	Jul-Dec 2015			Cumulative – 12 months to date		
	Coventry		UK	Coventry		UK
Total	+1.5%	↑	-0.8%	↓	+0.7%	↑
Evening (7pm-3am)	+23.4%	↑				

Includes Footfall counts from City Arcade, Hertford St, Market Way, Priory Place, Smithford Way, Upper Precinct plus shared data from Lower Precinct & West Orchards. (Evening data does not include shared data).

Prime retail void units

Voids at end of:	Q4 2015	Q3 2015	% change vs. Q3 2015		Q4 2014	% change vs. Q4 2014	
No. of void units	51	53	-3.8%	↓	53	-3.8%	↓

City centre retail voids
(last day of quarter)



Q4 2015 voids as % of city centre	13.3%
National voids (Springboard Research UK Q2 2015 result)*	9.8%
Newly occupied units Q4 2015	9
Newly void units Q4 2015	7
Council-managed voids Q4 2015	17

*There is a delay in receiving the national vacancy rate from Springboard so this is the UK vacancy rate from 2 quarter previously

New measure being recorded from Q3 2013: retail voids now differentiated by council-managed and non council-managed properties.

City centre cleansing

% of sites inspected falling below satisfactory standards for litter				
Jul-Dec 2015*	% point change vs. Jan-Jun 2015*		% point change vs. Jul-Dec 2014	
14.3%	+5.6%	↑	+14.3%	↑

Results based upon weekly cleansing team inspections of city centre locations (approx. 260 inspections per quarter). Sites inspected randomly and according to Tidy Britain Group methodology. Those failing to achieve grade B or above classed as unsatisfactory standard.

*In April 2015 there was a change in inspector and the increase in failed inspections may be partly a result of this, there is a subjective element to the inspections. Also, inspections did not take place in April or May 2015, the sample in June 2015 included the inspections usually conducted in April and May.

Tourism website (visitcoventry&warwickshire)

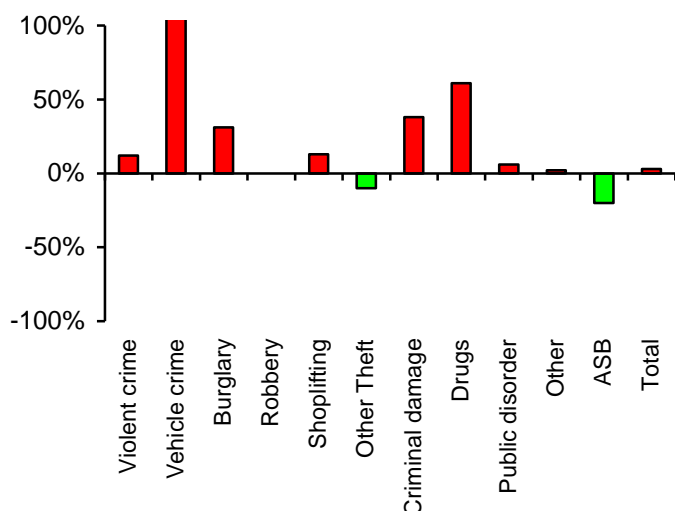
	Year-on-year performance		
	Jul-Dec 2015		Cumulative - year end
Sessions (visits):	+69.0%	↑	Data unavailable
Users (unique visits):	+71.1%	↑	
Page views (minus spiders)	+61.0%	↑	

Spider activity refers to automated page views performed by computer programs such as search engines i.e. non-human activity.



City centre crime

City centre crime: Year-on-year percentage change Jul-Dec 2015

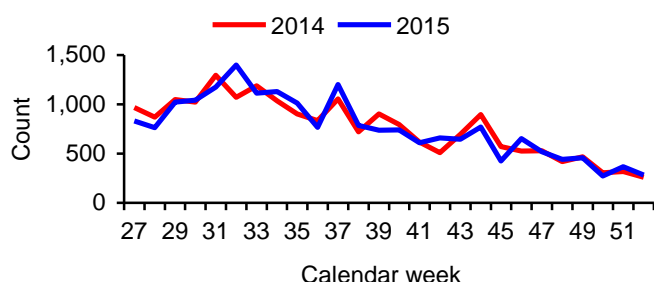


Year-on-year performance (compared to same period last year)					
Crime type	Jul-Dec 2015		Cumulative - 12 months to date		
	n	YoY			
Violent crime	177	12% ↑	2%	↑	
Theft of/ from Vehicle	39	117% ↑	19%	↑	
Burglary	67	31% ↑	25%	↑	
Robbery	18	0% ↔	-14%	↓	
Shoplifting	296	13% ↑	3%	↑	
Other Theft (incl. from person)	286	-10% ↓	-12%	↓	
Criminal damage & arson	95	38% ↑	12%	↑	
Drugs	45	61% ↑	36%	↑	
Public disorder & weapons	57	6% ↑	28%	↑	
Other	60	2% ↑	18%	↑	
Anti-social behaviour	275	-20% ↓	-30%	↓	
Total	1,415	3% ↑	-6%	↓	

Crimes recorded within Coventry's ring road (police data supplied by Community Safety team).

Tourist Information Centre (TIC)

Tourist Information Centre footfall



Year-on-year performance (compared to same period last year)				
	Jul-Dec 2015		Cumulative - 12 months to date	
TIC Footfall	0.0%	↔	-4.6%	↓

	Jul-Dec 2015		Cumulative - 12 months to date	
TIC Sales & Commission	-2.3%	↓	-2.5%	↓

Shopmobility

Year-on-year performance (compared to same period last year)				
	Jul-Dec 2015		Cumulative - 12 months to date	
Usage	-0.7%	↓	-0.2%	↓
New members	-7.6%	↓	-3.4%	↓

For further information regarding this update, please contact Thomas Evans, Insight
 Telephone: (024) 7683 3946
 Email: insight@coventry.gov.uk

Car Parking

Year-on-year performance (compared to same period last year)				
(% change in usage numbers)	Jul-Dec 2015		Cumulative - 12 months to date	
Car Parks	-1.8%	↓	-0.6%	↓
On street bays	+14.4%	↑	+25.2%	↑
Overall	+0.9%	↑	+3.4%	↑

Usage recorded at council run, city centre car parks and city centre on street parking bays. Belgrade Plaza and Skydome car parking figures not included as these sites are separately managed.

Report produced by
 Insight, Coventry City Council
 Floor 4, Civic Centre 4, Much Park Street,
 Coventry, CV1 2PY