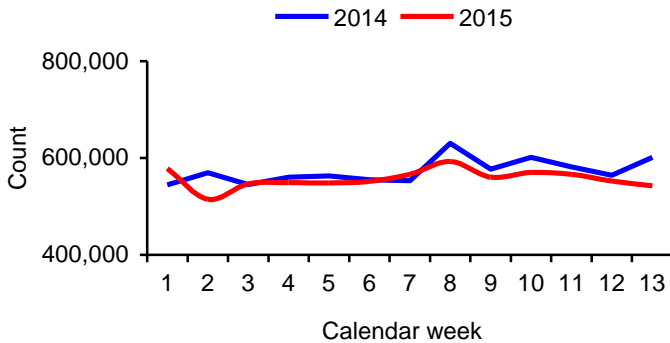


Chief Executive's Directorate; *Insight*

Coventry City Centre: First Quarter 2015 Healthcheck review Jan-Mar 2015

Footfall



City centre footfall	Year-on-year performance				
	Q1 2015		Cumulative - year to date	UK to date	
Total	-2.8%	↓	As Q1	-0.8%	↓
Evening (7pm- 3am)	*				

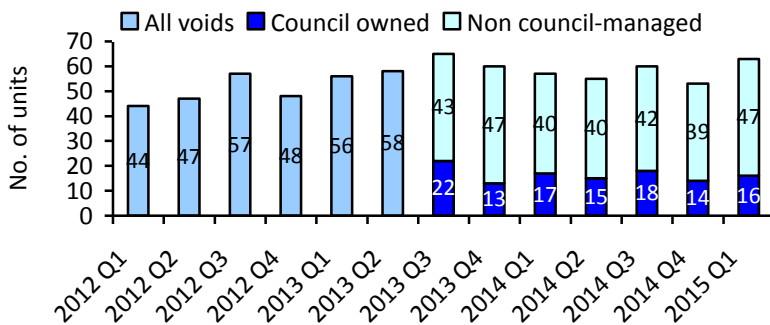
*evening footfall data is not available for this quarter due to an anomaly in the data, it will return in the next report.

Includes Footfall counts from City Arcade, Hertford St, Market Way, Priory Place, Smithford Way, Upper Precinct plus shared data from Lower Precinct & West Orchards. (Evening data does not include shared data).

Prime retail void units

Voids at end of:	Q1 2015	Q4 2014	% change vs. Q4 2014	Q1 2014	% change vs. Q1 2014		
No. of void units	63	53	18.9%	↑	57	10.5%	↑

City centre retail voids (last day of quarter)



Q1 2015 voids as % of city centre	16.2%
National voids (Springboard Research UK Q4 2014* result)	(10.4%)

Newly occupied units Q1 2015	4
Newly void units Q1 2015	14
Council-managed voids Q1 2015	16

*There is a delay in receiving the national vacancy rate from Springboard so this is the UK vacancy rate from the previous quarter.

New measure being recorded from Q3 2013: retail voids now differentiated by council-managed and non council-managed properties.

City centre cleansing

% of sites inspected falling below satisfactory standards for litter				
Q1 2015	% point change vs. Q4 2014		% point change vs. Q1 2014	
0.0%	0.0%	↔	-3.1%	↓

Results based upon weekly cleansing team inspections of city centre locations (approx. 260 inspections per quarter). Sites inspected randomly and according to Tidy Britain Group methodology. Those failing to achieve grade B or above classed as unsatisfactory standard.

Tourism website (visitcoventry)

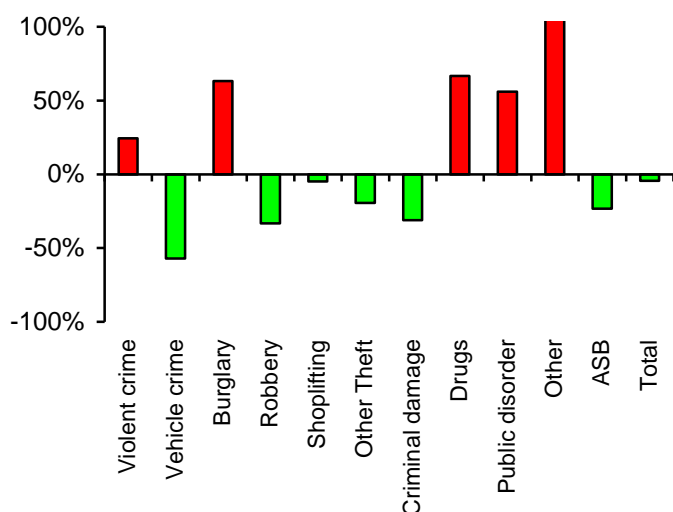
	Year-on-year performance	
	Q1 2015	Cumulative - year to date
Estimated users	Website relaunch - recording system changed to Google Analytics in June 2014. No comparable data for this quarter.	
Unique IP addresses		
Page views (minus spiders)		

Spider activity refers to automated page views performed by computer programs such as search engines i.e. non-human activity.



City centre crime

City centre crime: Year-on-year percentage change Q1 2015

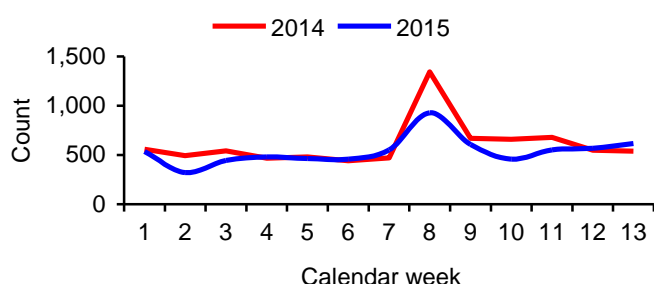


Crime type	Year-on-year performance		Cumulative - year to date
	n	YoY	
Violent crime	97	24.4% ↑	As Q1
Theft of/ from Vehicle	6	-57.1% ↓	
Burglary	31	63.2% ↑	
Robbery	10	-33.3% ↓	
Shoplifting	155	-4.9% ↓	
Other Theft (incl. from person)	145	-19.4% ↓	
Criminal damage & arson	29	-31.0% ↓	
Drugs	20	66.7% ↑	
Public disorder & weapons	39	56.0% ↑	
Other	51	121.7% ↑	
Anti-social behaviour	156	-23.2% ↓	
Total	739	-4.5% ↓	

Crimes recorded within Coventry's ring road (police data supplied by Community Safety team).

Tourist Information Centre (TIC)

Tourist Information Centre footfall



	Year-on-year performance		Cumulative - year to date
	Q1 2015		
TIC Footfall	-11.4%	↓	As Q1

	Financial quarter Jan-Mar 2015		Financial year end	
TIC Sales & Commission	+0.3%	↑	-13.8%	↓

Shopmobility

	Year-on-year performance		Cumulative - year to date
	Q1 2015		
Usage	-1.4%	↓	As Q1
New members	+2.1%	↑	

Car Parking

(% change in usage numbers)	Year-on-year performance		Cumulative - year to date
	Q1 2015		
Car Parks	+4.0%	↑	As Q1
On street bays	+45.5%	↑	
Overall	+8.8%	↑	

For further information regarding this update, please contact Richard Evans, Insight Team
 Telephone: (024) 7683 4372
 Email: insight@coventry.gov.uk

Usage recorded at council run, city centre car parks and city centre on street parking bays. Belgrade Plaza and Skydome car parking figures not included as these sites are separately managed.

Report produced by
 Insight Team, Coventry City Council
 Floor 4, Civic Centre 4, Much Park Street, Coventry, CV1 2PY

