



Public Health
England

Protecting and improving the nation's health

A signposting guide to public health intelligence resources

West Midlands



About Public Health England

Public Health England exists to protect and improve the nation's health and wellbeing, and reduce health inequalities. It does this through world-class science, knowledge and intelligence, advocacy, partnerships and the delivery of specialist public health services. PHE is an operationally autonomous executive agency of the Department of Health.

Public Health England
Wellington House
133-155 Waterloo Road
London SE1 8UG
Tel: 020 7654 8000
www.gov.uk/phe
Twitter: @PHE_uk
Facebook: www.facebook.com/PublicHealthEngland

The development of this signposting guide has been a collaborative project with input from a number of regional analytical partners including PHE LKIS East (Caroline Wright, Siân Evans, Sarah Miller, James Harrison, James Perry, Helen Knowles), PHE LKIS North West (Lynn Deacon), PHE LKIS East Midlands (Natalie Cantillon), PHE LKIS West Midlands (Matthew Francis, Nicola Dennis), PHE LKIS London (Denise McCoy), PHE LKIS Yorkshire and Humber (Verity Bellamy) as well as PHE FES East (Amy Trindall) and PHE NDTMS East (Paul Tansley).

For queries relating to this document, please contact: LKISWestMidlands@phe.gov.uk

© Crown copyright 2016

You may re-use this information (excluding logos) free of charge in any format or medium, under the terms of the Open Government Licence v3.0. To view this licence, visit [OGL](https://www.ogil.io/) or email psi@nationalarchives.gsi.gov.uk. Where we have identified any third party copyright information you will need to obtain permission from the copyright holders concerned. Any enquiries regarding this publication should be sent to LKISWestMidlands@phe.gov.uk

Published: May 2016

PHE publications gateway number: 2016112

This document is available in other formats on request. Please email LKISWestMidlands@phe.gov.uk

Front cover image from: <http://worldartsme.com/s/terms.html>



Contents

About Public Health England	2
Contents	3
Executive summary	5
1. Background	6
1.1 The purpose of this guide	6
1.2 The scope of this guide	6
2. Signposting to existing resources	7
2.1 Is what you need already available?	7
2.2 A quick guide to the key places to look	7
2.3 Guidance for key groups of health intelligence users	9
2.3.1 Guidance on finding public health data tools and information	9
2.3.2 Guidance on finding public health training	15
2.3.3 Guidance on finding public health evidence, research and library resources	15
2.4 What if I can't find what I need using existing online health intelligence resources, where can I find additional local support?	16
2.5 How do I keep up to date with existing and newly released public health data tools, evidence and resources?	18
Appendix A Signposting to national health intelligence resources	19
Appendix A1 National PHE and NHS data tools and resources	19
Geographic granularity of national PHE and NHS data tools	34
Appendix A2 National PHE health protection data tools resources	45
Appendix A3 PHE National Cancer Registration and Analysis Service (NCRAS) data flows	48
Appendix A4 National PHE sexually transmitted infections and HIV data tools and resources	49
Appendix B. Signposting to regional health intelligence resources	51
Appendix B1 Datasets and resources held by the Local and Knowledge Intelligence Service West Midlands	51
Appendix B2 Datasets and resources held by the West Midlands Field Epidemiology Service (WMFES)	53
Appendix B3 Datasets and resources held by PHE West Midlands National Drug and Alcohol Treatment Monitoring System (NDTMS)	56

Appendix B4	Datasets held by local authorities in the West Midlands	57
Appendix C.	Accessing health intelligence support and advice	58
Appendix C1	Summary of health intelligence support provided regionally by organisation	58
Appendix C2	Summary of local authority resources and contacts in the West Midlands	61
Appendix C3	Summary of Local Knowledge and Intelligence Service (LKIS) contacts in the West Midlands: place-based leads	63
Appendix D.	Summary of health intelligence support provided locally by resource type	66
Appendix D1	Guidance on how and where to seek support and advice on public health data and analysis	66
Appendix D2	Guidance on how and where to seek support and advice on PHE public health training	70
Appendix D3	Guidance on how and where to seek support and advice on public health evidence and PHE library services	76
Feedback		77
Glossary		78

Executive summary

This publication is designed as a reference document to aid those working in, or with an interest in, public health to better access health-related data, evidence and training resources. By improving signposting to key public health resources, the document aims to reduce duplication and improve knowledge, self-sufficiency, and confidence when navigating the public health intelligence system.

This signposting guide is a practical resource which sets out how and where to find information by topic and organisation type, and outlines which resources are currently available (with hyperlinks to access them easily), as well as providing contact details for regional and local support.

The guide was first published in April 2015. This version includes an updated list of available data tools as well as guidance on how to access public health training opportunities and the Knowledge and the Library service within PHE. The next revision of this guide is expected in quarter 2 of 2016/17.

1. Background

1.1 The purpose of this guide

Changes to the public health and healthcare system introduced in April 2013 have resulted in significant changes to the health intelligence system and its services.

Responsibility for the collection and provision of key public health-related datasets, evidence and training has moved to a number of new organisations, and many historic routes by which individuals and organisations used to access data, evidence, analytical support and training have changed.

It is possible that users of health intelligence are now uncertain where or how to seek support, and health intelligence providers risk unwittingly duplicating analysis. This guide is designed to act as a signposting guide for health intelligence, providing information about what tools exist to provide data, evidence and training, and where and how to access them. It has been adapted from a guide originally developed in the East of England.

The guide is best used electronically. All dark red text in the body of the document (excluding titles and headings) is hyperlinked to an information source or organisation.

1.2 The scope of this guide

The guide is intended primarily to be a navigational tool, helping to signpost readers to available public health intelligence resources and tools. It is therefore beyond the scope of the document for it to function as a comprehensive directory of all available tools, nor as an introductory guide to the use and function of individual tools and datasets. Instead the document focuses on mapping resources available to the local health intelligence services in each national region and clarifies analytical arrangements between regional Local Knowledge and Intelligence Service (LKIS) teams, PHE centres and local users.

Although greater clarity over what analytical arrangements have been agreed between different parts of the health system at a national level would be helpful, this is beyond the scope of this document. The document focuses on Public Health England (PHE), NHS and government health intelligence resources. Support provided by other health intelligence providers, including those outside the public sector, has not been considered.

2. Signposting to existing resources

2.1 Is what you need already available?

There is now a wealth of online health tools and resources available to support local action to improve health and reduce health inequalities. In fact, one of the challenges facing those wishing to access health intelligence is navigating the vast range of data and evidence now available. This guide does not attempt to provide a comprehensive overview of the myriad of health intelligence resources available, but rather:

- provides an overview on where to look for common public health intelligence data, evidence and training resources
- summaries the key resources available from PHE, NHS England and local authority public health teams
- provides links for where to go to seek further advice on finding public health-related data, evidence or training opportunities

2.2 A quick guide to the key places to look

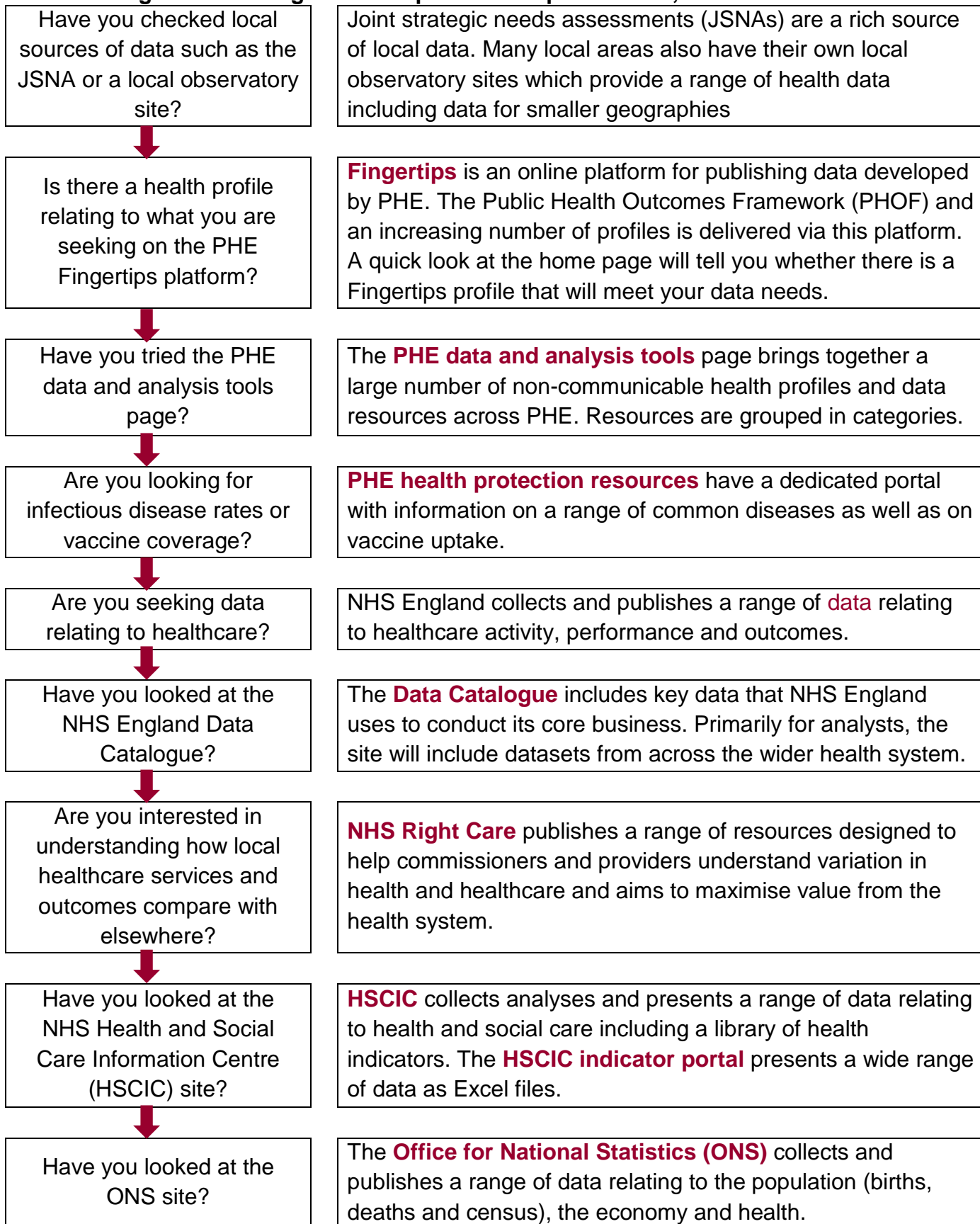
Figure 1 shows a quick guide to some of the key places to look for health data and evidence. It is not intended to be a comprehensive overview, but aims to signpost the most common sources. Many health intelligence queries can be answered using the resources listed.

Further guidance on key sources of public health intelligence is shown in the appendices, including:

- National PHE resources (Appendix A1)
- National NHS resources (Appendix A1)
- National PHE health protection resources (Appendix A2)
- PHE National Cancer Registration and Analysis Service (NCRAS) resources (Appendix A3)
- National sexually transmitted infections and HIV resources (Appendix A4)
- PHE Local Knowledge and Intelligence Service West Midlands (LKIS WM) resources (Appendix B1)
- PHE Field Epidemiology Service resources (Appendix B2)
- PHE National Drugs Treatment Monitoring System (NDTMS) resources (Appendix B3)
- PHE local authority resources (Appendix B4)
- PHE training resources (Appendix D2)
- PHE library services resources (Appendix D3)

Figure 1. Guide to finding health intelligence resources

I am seeking health intelligence on a particular topic or issue, where should I look?



2.3 Guidance for key groups of health intelligence users

2.3.1 Guidance on finding public health data tools and information

The following boxes highlight key resources for public health datasets and data tools that are of interest to specific groups of health intelligence users.

A more detailed list of data resources can be found in Appendix A and Appendix B.

If you cannot find what you are looking for in these boxes or in the Appendices, please contact LKISWestMidlands@phe.gov.uk.

Box 1. I want to get an overview of the health of the local population without having to do any analysis; I just want the key messages:

- **Health profiles** give a snapshot overview of population health in each local authority in a brief downloadable report
- **Child health profiles** give a similar snapshot of the health of the child population in counties and unitary authorities in a brief downloadable report
- **Marmot indicators** for local authorities show key indicators of the social determinants of health, health outcomes and social inequality that broadly correspond to the policy recommendations proposed in **Fair society, healthy lives** in a brief downloadable report
- The **longer lives** website highlights premature mortality for every county and unitary authority in England – the site is designed to be easy to use to make England’s mortality accessible to everyone – additional development of this site includes healthier lives, which contains a data overview of **diabetes, high blood pressure, NHS Health Check, and alcohol and drugs**
- **My NHS** from NHS Choices presents key data used by the NHS and local councils to monitor performance and shape local services

Box 2. I want to get an overview of health inequalities in the local population without having to do any analysis; I just want the key messages:

- **Health inequalities gap measurement tool** provides detailed information on the nature and extent of health inequalities across England, showing inequality gaps in mortality rates within and between areas by grouping local populations according to relative levels of deprivation
- **Health inequalities intervention toolkit** provides information on diseases causing low life expectancy and high infant mortality rates in individual areas, enabling good local priority setting and assisting with evidence-based local service planning and commissioning
- **Marmot indicators for local authorities in England** provides baseline figures for some key indicators of the social determinants of health, health outcomes and social inequality that correspond, as closely as is currently possible, to the indicators proposed in Fair society, healthy lives

Box 3. I want to get an overview of risk factors in the local population without having to do any analysis; I just want the key messages:

- **National Drug Treatment Monitoring System (NDTMS)** collects, collates and analyses information from and for those involved in the drug treatment sector
- **Local alcohol profiles for England (LAPE) (Fingertips)** provides information for local government, health organisations, commissioners and other agencies to monitor the impact of alcohol on local communities and to monitor the services and initiatives that have been put in place to prevent and reduce the harmful impact of alcohol
- **Local tobacco control profiles for England (Fingertips)** provides a snapshot of the extent of tobacco use, tobacco related harm, and measures being taken to reduce this harm at a local level
- **PHE obesity knowledge and intelligence website** provides a single point of contact for wide-ranging authoritative information on data, evaluation, evidence and research related to weight status and its determinants

Box 4. I'm a commissioner or provider of healthcare services and am interested in understanding variation in health care activity and outcomes and how my local area compares with elsewhere:

- **Health intelligence networks (HINs)** provide an increasing range of specialist resources to help support commissioners and providers of services – the HINs support **maternal and child and maternal health; cancer; cardiovascular disease; mental health, dementia and neurological conditions; and end of life care**
- **Atlases of variation** are intended to support the understanding of variation in health and health care outcomes, including that which cannot be explained by patient need or preferences – by helping clinicians, commissioners and other decision makers understand what is going on in their area the Atlases can help focus attention on key areas for action
- **Commissioning for value packs** are available for every CCG and identify candidate programmes which offer the most value in return for improvement work
- **Local cancer intelligence** provides a snapshot for each CCG of their local cancer incidence, mortality, survival, prevalence, patient experience, route to and from diagnosis

Box 5. I am a local authority or CCG commissioner and want to assess the cost-effectiveness and return on investment of public health interventions:

- **Return on investment (ROI) tools** for tobacco, alcohol and physical activity have been developed by NICE to support investment decisions by commissioners and policy makers in local authorities and the NHS – each tool models a portfolio of interventions and estimates the likely economic returns for their area: the tools are in the form of Excel spreadsheets, accompanied by a package of support materials, including a user guide and technical report – PHE will be supporting the implementation of these resources
- The **spend and outcome tool (SPOT)** gives local authorities and CCGs in England an overview of spend and outcomes across key areas of business – the tool is an interactive spreadsheet that allows you to explore the data in detail, you can also download a pdf factsheet that has the information from the tool

Box 6. I'm a member of a Strategic Clinical Network (SCN) and am seeking data and health intelligence to understand health and healthcare outcome in my network area:

- **Health intelligence networks** provide an increasing range of specialist resources to help support commissioners and providers of services
- The **National Child and Maternal Health Intelligence Network (ChiMat)** publishes a wide range of data tools and resources to help local areas understand maternal and child health in their local area including **child health profiles, children and young people's health benchmarking tool, atlas of variation for children and young people, needs assessment reports and service snapshots**
- The **National Cancer Registration and Analysis Service (NCRAS)** provides a list of free access and authorised access sites that contain cancer information; of particular relevance are the tumour specific data hubs, **cancer outcomes and services dataset (COSD), cancer e-atlas** showing cancer incidence, mortality and survival by cancer network and local authority broken down by the main tumour types; a **Cancer Service Fingertips profile** contains a number of indicators at GP and CCGs level including cancer demographics, screening, referral activity, diagnostic use and route to diagnosis; the CancerData portal is a public view of the most up to date incidence and mortality data, the CancerStats portal is only available via an N3 connection and contains a cancer dashboard, clinical headline indicator dataset and view of COSD data
- The **National Cardiovascular Intelligence Network (NCVIN)** publishes local **cardiovascular disease (CVD) profiles, CVD commissioning for value packs and CVD intelligence packs** which provide data on prevention, detection and management of cardiovascular conditions
- The **National Mental Health Dementia and Neurology Intelligence Network (MHDNIN)** publishes a suite of profiles including those relating to **children and young people's mental health and wellbeing, co-existing substance misuse and mental health issues, common mental health disorders, community mental health profiles, dementia, neurology, severe mental illness and suicide prevention**
- The **National End of Life Care Intelligence Network (NEoLCIN)** publishes **end of life care profiles** for CCGs and local authorities and has links to a suite of **end of life care modelling tools**

Box 7. I work in primary care and am seeking data and health intelligence to understand health and healthcare outcomes for my patients:

- **National GP practice profiles** present a range of health indicators for practices in England; the indicators include Quality and Outcomes Framework (QOF), the GP patient survey and the attribution dataset – over 99% of practices in England are included
- **NCRAS Fingertips cancer service profiles** include more than 20 cancer specific indicators
- **Primary care web tool** from NHS England presents general practice high level indicators and general practice outcome standards indicators (restricted access: nhs.net account and log in required)
- **Care Quality Commission (CQC) intelligent monitoring bandings** are a collection of indicators that the CQC uses to assess the level of risk within a practice and thus inform their inspection regime

Box 8. I work in secondary care and am seeking data and health intelligence to understand health and healthcare outcomes for my patients:

- **Health intelligence networks** (HINs) provide an increasing range of specialist resources to help support commissioners and providers of services – the HINs support **child and maternal health; cancer; cardiovascular disease; mental health, dementia and neurological conditions; and end of life care**
- **HES Procedures Explorer tool and Dashboard** by the Royal College of Surgeons, Surgical Speciality Associations and NHS England and Right Care, benchmark HES procedures used by GP, CCG and provider geographies to support elective surgery commissioning guides
- **Atlases of variation** are intended to support the understanding of variation in health and healthcare outcomes, including that which cannot be explained by patient need or preferences; by helping clinicians, commissioners and other decision makers understand what is going on in their area the Atlases can help focus attention on key areas for action
- **Hospital activity guide for clinicians** by the Royal College of Physicians and the HSCIC gives a useful overview of hospital activity data
- the **NHS Health and Social Care Information Centre (HSCIC)** oversee the collection of Hospital Episode Statistics and publish a range of information on hospital care

Box 9. I am analyst or have some analytical expertise and am seeking resources to help me calculate DSRs, indirectly standardised rates, produce a funnel plot, measure inequalities, and so on...

- PHE maintains a webpage, **Tools for public health analysis**, listing a range of analytical resources that previously appeared on the Association of Public Health Observatories site
- The **West Midlands Knowledge and Intelligence Service** has developed a number of data tools that include Excel functions for DSR and confidence intervals and a spine chart tool
- **Inequalities analysis tool** is an Excel spreadsheet that allows the calculation of a range of measures of inequality commonly used in population health

2.3.2 Guidance on finding public health training

Training is a key deliverable within the Local Knowledge and Intelligence Services (LKIS) work programme. Each region delivers the training programme required by local need, often in collaboration with local stakeholders.

Training focuses on a variety of subjects, from understanding how and when to use the tools produced by PHE, through to understanding how to utilise public health data visualisation in a decision making environment.

Courses can be small bitesize web-based learning or larger one-, two- or five-day courses depending on the audience and learning outcomes to be delivered.

Training is delivered as a priority to local authorities, although much of the training made available is also accessible by NHS and third sector staff. PHE do not currently routinely offer training to private companies but enquiries are welcomed.

Appendix D2 outlines training opportunities available to different sectors of the workforce.

2.3.3 Guidance on finding public health evidence, research and library resources

Bringing together data with the evidence from research into 'what works' supports public health teams in evidence-based decision making. The Public Health England Knowledge and Library service team are working with NICE, Health Education England, and the NHS to secure access to the best available evidence to support the translation of knowledge into practice. This includes working to ensure that public health electronic resources are available via NICE Evidence Search and OpenAthens. PHE Centres can also provide advice and expertise on current policy and evidence on public health interventions (see Appendix D3 for local contact details).

The local system is responsible for ensuring access to day-to-day library and knowledge services such as literature searching and document delivery, and arrangements vary across the country. Details of locally based Public Health England Knowledge and Evidence Specialists who can give details and advice about services within your area are listed in Appendix D3.

The PHE Knowledge Management Platform is under development. The Platform will allow access to the evidence base for public health, including knowledge updates on priority topics, learning from practice examples and shared search results, and will be open access. Please contact your local specialist (see Appendix D3) for updates.

2.4 What if I can't find what I need using existing online health intelligence resources, where can I find additional local support?

Although many common health intelligence questions can be answered using existing online data tools and resources, for some questions there will be a need to carry out bespoke data or evidence extraction and analysis to address specific issues or queries. It is also recognised that users may need specialist help in navigating existing online health data tools and library services and/or guidance in interpreting the information for their local population. In some instances guidance to additional training may also be required.

The main routes by which individuals can access further advice and support vary depending on the type of support being sought, and on the organisation within which the individual is based. Bespoke analysis requires dedicated analytical time and so often incurs a cost to the organisation supplying the analysis. For this reason, most health and healthcare organisations only offer a free on point of delivery bespoke analysis to their own internal organisation or to a limited range of stakeholder or partner organisations. The exception to this may be signposting to, and support in the use and interpretation of, health intelligence resources published by the organisation and the provision of extracts from data or evidence held by the organisation, although this too may incur charge in certain circumstances.

Generally there are three main steps to accessing health intelligence which are set out in Figure 2.

Figure 2. Three steps to accessing population health intelligence.



Appendix B summarises the range of health intelligence support provided locally in the West Midlands by PHE (including through the KIS, FES, and NDTMS), by NHS England and by local authority analytical teams.

Appendix C also gives guidance for those based in different organisations in the healthcare and public health system on where to go to seek health intelligence support and advice. This guidance will not cover all possible health intelligence scenarios, but aims to provide some direction on options on where to go to seek support.

Box 10 shows the basic guiding principles which are used by PHE KIS, PHE centres and NHS England analytical teams to support the prioritisation of requests for data and analytical support.

Box 10. Guiding principles for requests for data or analytical support

In prioritising and responding to requests the following factors will be considered:

- whether the request can be met by signposting to existing resources
- whether the request could be better dealt with by a local partner organisation
- whether a request for data can be met in a way that conforms to current data sharing agreements meets the National Statistics and other standards on confidentiality
- whether the request can be met within current capacity within the required timeframe
- whether responding to the request will require innovation in the analysis, interpretation or presentation that could usefully be applied to other issues or used by others
- whether adoption of a 'do once and share approach' or the development of case study exemplars would be helpful in avoiding duplication and promoting consistency
- whether the request represents common health intelligence support needs that could best be addressed nationally or by other parts of the system outside the local area
- for PHE LKIS: whether the request aligns with priorities that have been collectively agreed locally, that align with national PHE priorities, or that relate to a wide geographical area, such as that covered by a PHE centre or a NHS England Strategic Clinical Network

2.5 How do I keep up to date with existing and newly released public health data tools, evidence and resources?

PHE local knowledge and intelligence service produces regular statistical releases.

The statistical release is designed to bring together reports and data releases from PHE, ONS, HSCIC and other government departments in to one monthly update distributed by the local knowledge and intelligence services.

The statistical release looks back at the previous month's releases and provides both ad-hoc, yearly, monthly and weekly release of data. Each item is linked to topic or theme, and the direct URL to the resource is provided. Some LKIS teams provide a regional version of the statistical release which highlights region specific information relevant to the local authorities within the area.

West Midlands Statistical Releases are available on request.

Appendix A Signposting to national health intelligence resources

Appendix A1 National PHE and NHS data tools and resources

PHE produces a wide variety of tools and interactive resources to help users access data. A comprehensive list of data tools is set out below organised by health-related category.

The majority of tools listed below are produced and maintained by PHE. Other relevant tools produced by the NHS or other organisations are denoted by an asterisk (*). A number of tools are available on the Fingertips platform and are noted as such.

Fingertips is a platform of interactive web tools visualising public health indicators in thematic profiles for easy analysis and interpretation of the data. A video showing how to use Fingertips is available [here](#).

Cancer

Cancer general:

- The **Public Health England National Cancer Registration and Analysis Service (NCRAS)** brings together the expertise of the former National Cancer Intelligence Network (NCIN) and National Cancer Registration Service (NCRS). NCRAS collects and analyses data from NHS England and a range of other stakeholders, including the Office for National Statistics and the HSCIC
- **CancerData** is a public facing version of CancerStats and contains incidence and mortality data for England and the CCGs for most cancer sites and groups of sites
- **CancerStats** is a password-protected data portal containing a variety of cancer statistics by a range of geographies, including incidence, mortality and survival
- **Cancer e-atlas and instant atlas** provides a way to view cancer incidence and mortality statistics for the UK, the constituent parts of the UK (England, Northern Ireland, Scotland or Wales) and smaller localities; plus a range of Instant Atlas sources for cancer sites, including the gynaecological cancer hub, skin cancer hub and urological cancer hub
- **Cancer mortality profiles** show trends in cancer mortality rates in England for under 75s by different levels of geography
- **Cancer patient experience** provides insights into the care experienced by cancer patients across England who were treated as day cases or inpatients
- **Cancer services profile (Fingertips)** brings together a range of process and outcomes information relevant to cancer in primary care: for a given GP practice, it is possible to benchmark against England or the relevant CCG, and extract data for all practices in the country or a CCG

- **Cancer statistics availability summary**: updated in February 2016, a comprehensive guide to available cancer data including published research
- **Cancer waiting times** waiting times of people referred by their GP with suspected cancer symptoms and those subsequently diagnosed with and treated for cancer by the NHS in England
- **Clinical commissioning group profiles** provide a snapshot overview of cancer within a given geography
- **Clinical headline indicators**, previously known as the **service profiles** assist commissioners of cancer services and TNHS trust staff to understand the variation across the MDTs (local service) for both patient experience and patient care
- **GP practice profiles** bring together a range of process and outcomes information relevant to cancer in primary care
- **Local cancer intelligence tool** hosted by PHE and created in partnership with Macmillan Cancer Support, provides information on incidence, mortality, survival and prevalence at CCG level
- **Office for Data Release (ODR)** collate and approve applications for patient identifiable health data, particularly for research studies making use of cancer registration, who must have appropriate ethical and information governance approvals
- **Routes to diagnosis of cancer** holds a number of national publications and datasets that show a range of variables and geographies, including stage
- **Staging** provides information on two staging measures: completeness of staging data and the proportion of early staged cancers
- **UK cancer prevalence project** provides cancer prevalence data for people diagnosed with cancer over a 20-year period and aims to segment information on the UK cancer population so that there is a more granular understanding of them
- **Understanding cancer e-learning modules** covers a range of topics including an easy to understand overview of how cancer services are organised in the NHS, information about tests and treatments and detailed information by site

Cancer site-specific and locally-focused intelligence:

NCRAS cancer site, topic-specific and locally focused work including:

- **Cancer staging statistics** is an excel file containing cancer staging information by CCG in England
- **Cancer outcomes metrics** is an excel file containing cancer outcomes metrics presented at CCG level, on a quarterly basis and with a one-year rolling average
- **Gynaecological cancer hub** provides data and intelligence on the gynaecological cancers in England – it is aimed at professionals working in the field, including NHS providers, commissioners, strategic clinical networks, charities, gynaecologists, nurse specialists and other clinicians
- **Gynaecological cancer profiles** provide information about incidence and mortality rates for the main gynaecological cancers, survival, and influencing factors, such as deprivation, smoking prevalence and obesity along with cervical screening coverage indicators

- [Head and neck cancer e-atlas \(profiles\)](#) provides incidence and mortality data in relation to head and neck cancers
- [Head and neck cancer e-atlas \(resources\)](#) provides information and lists reports, data briefings and posters/presentations on head and neck cancers including therapies
- [Head and neck cancer hub](#) provides data and intelligence on head and neck cancers in England
- [Prevalence e-atlas](#) provides information on the total number of patients who had been diagnosed with cancer up to one year, five years or ten years before 31 December 2006, and who were still alive on 31 December 2006 broken down by cancer type
- [Routes to diagnosis of cancer](#), including major resections, holds a number of national publications and datasets that contain regional breakdowns by SCN and CCG
- [Skin cancer hub](#) provides information and resources to support prevention and early diagnosis
- [Skin cancer profiles](#) provide a set of indicators to help identify and understand the trends in skin cancer across England
- [Thirty-day postoperative mortality after colorectal cancer surgery in England](#) contains information on the 30-day postoperative mortality rates of all English NHS trusts and cancer networks undertaking major surgery for colorectal cancer
- [Urological cancer hub](#) provides data and intelligence on urological cancers in England
- [Urological cancer profiles](#) provide a set of indicators to help identify and understand variation of urological cancers across England

Child and maternal health:

- [Atlas of variation in healthcare for children and young people \(NHS\)*](#) provides data to help identify variations in healthcare and priority areas for improving outcome, quality and productivity
- [Breastfeeding profiles](#) show performance against a range of indicators describing demographic, breastfeeding behaviour and health outcome data for mothers and their children
- [Child health profiles](#) provide a snapshot of child health and wellbeing for each local authority in England using key health indicators, which enable comparison locally, regionally and nationally
- [Children and young people's health benchmarking tool \(Fingertips\)](#) presents a selection of indicators that are most relevant to the health and wellbeing of children and young people in an easily accessible way to support local decision making
- [Children and young people's mental health and wellbeing \(CYPMHW\) profiling tool](#) presents collated data on risk, prevalence and the range of health, social care and education services that support children with, or vulnerable to, mental illness
- [Comprehensive CAMHS integrated workforce planning tool](#) provides a workforce planning template which guides you through the stages of integrated workforce planning in order to successfully complete your own comprehensive CAMHS integrated workforce plan

- **Data atlas – children, young people and maternity** is an interactive mapping tool enabling users to explore, interrogate and view relevant indicators and trends in map, chart and tabular formats
- **Early years profiles** are designed to help commissioners and providers of health visiting services to assess the priorities for and outcomes of the transformation of health visiting services
- **Health behaviours in young people – what about YOUth? (Fingertips)** provides local authority level estimates of 15-year-olds self-reported attitudes to healthy lifestyles and risky behaviours including nutrition, physical activity, smoking, alcohol, use of drugs, bullying and wellbeing
- **Improving services toolkit: children who are ill** examines emergency hospital admissions for children with common (respiratory and gastric complaints) and more complex childhood conditions (congenital heart conditions, cerebral palsy or metabolic disorders)
- **Improving services toolkit: children with long term conditions** examines emergency hospital admissions for children because of asthma, diabetes or epilepsy and looks at how long these children spend in hospital, how they were admitted, and levels of activity at different providers
- **Improving young people's health and wellbeing: a framework for public health** links to policy, guides and practice and reports
- **Infant mortality and stillbirths profiles** show performance for local authorities and CCGs against a range of indicators allowing local and national comparisons
- **JSNA navigator – children and young people** takes users directly to the data which is needed when conducting a joint strategic needs assessment (JSNA) locally for children and young people
- **Knowledge hub – children's, young people's and maternal health** provides easy access to a range of information, evidence, knowledge and expertise relating to all aspects of children's, young people's and maternal health
- **Mental health in pregnancy, the postnatal period and babies and toddlers: needs assessment** brings together data and evidence on mental health in the antenatal and postnatal periods, and the social and emotional development and wellbeing of babies and toddlers
- **National child and maternal health intelligence network**
- **Needs assessment reports – CAMHS, disability, continence, demographic profile, maternity, speech and language** provide appropriate evidence-based information on prevalence, incidence and risk factors affecting children's health and the provision of healthcare services
- **Outcomes versus expenditure tools – CAMHS, child health, maternity and newborn** compare expenditure and other aspects of services with a number of outcome measures at local authority and PCT level
- **PREview planning resources – early years** can help commissioners, managers and professionals to target preventive resources, in particular around the Healthy Child

Programme, where they are most needed based on evidence identifying the factors in pregnancy and infancy that are associated with outcomes for children at five years

- **QIPP resource packs – child health, maternity** focus on opportunities to improve secondary care while placing this in the wider context of issues such as child poverty and health behaviours
- **School-age children profiles** include key current local data about children and young people's health and wellbeing, providing a context to help schools prioritise action
- **Self-assessment tools – acute paediatric services, infant mortality, NICE neonatal standards, young people's mental health transitions** are designed to help commissioners and local health economies assess their progress in implementing key national policy
- **Service snapshots – CAMHS, disability, infant mortality, maternity, obesity, teenage pregnancy and vaccination and immunisation** provide a summary of demand, risk factors, provision and outcomes for services in a particular area
- **Teenage Parent Outcomes Modelling Tool** brings together data and evidence about factors that affect outcomes for teenage parents and their babies and children
- **Tools and data directory – child and maternal health** signposts sources of data and statistics about children's, young people's and maternal health and wellbeing
- **Topical reports – accident prevention, early years, school-age children, youth justice**
- **Youth justice health and wellbeing needs assessment toolkit** helps with the planning, commissioning and writing of health and wellbeing needs assessments for use across the youth justice system, in both community and secure settings
- **Youth justice liaison and diversion toolkit** guides pathfinders and others through the stages of developing sustainable youth justice and liaison services and providing evidence of their success
- **Young people's profiles** allow areas to see how they perform against the national average and against other local areas when considering the key public health outcomes for young people

Comparison, practice and performance:

- **CCG and local authority information packs (NHS)*** information packs at local authority and CCG level that set out key data to inform the local position on outcomes – the local authority packs present high-level comparative information on the NHS, the adult social care and the public health frameworks; the CCG level packs provide a more detailed analysis of NHS outcomes and other relevant indicators
- **CCG maps (NHS)*** map of CCGs in England with names and geographic boundaries, and CCG boundaries for use in GIS software
- **Commissioning for value packs (NHS)*** identify where local health economies can prioritise their efforts to have the most impact in healthcare improvement for populations

- **National general practice profiles (Fingertips)** support GPs, CCGs and local authorities to ensure that they are providing and commissioning effective and appropriate healthcare services for their local population
- **Public health outcomes framework (Fingertips)** sets out a vision for public health, concentrating on two high-level outcomes which focus on improving not only how long people live, but how well they live at all stages of life, by monitoring specific indicators grouped into four 'domains', in order to understand how well public health is being improved and protected
- **Resources for CCGs (NHS)*** a range of resources and data published as part of the CCG Learning Network
- **Spend and outcome tool (SPOT)** enables the identification of areas requiring priority attention and where shifts in investment will optimise local health gains and improve quality
- **Strategic health asset planning and evaluation (SHAPE)** informs and supports the strategic planning of services and physical assets across a whole health economy, using evidence-based application

Dental health:

- **Dental public health intelligence programme** supports the collection, analysis and dissemination of reliable and robust information on the oral health needs of local populations. Other sources of dental public health intelligence include the **Child Dental Health Survey**, **Adult Dental Health Survey** and **NHS Dental Statistics for England**

Drugs, alcohol and tobacco:

- **Alcohol learning centre data tools** provide a range of tools and guidance to commissioners and providers as aids for needs assessment, treatment capacity, service impact and planning responses in local alcohol service delivery
- **Alcohol return on investment tool (NICE)*** evaluates a portfolio interventions and models the economic returns that can be expected in different payback timescales to help decision making on interventions and strategies to prevent and reduce alcohol use at local and sub-national levels
- **Co-existing substance misuse and mental health issues** analyses a wide range of publicly available data around tobacco smoking, alcohol use and drug use, including data on prevalence, risk factors, treatment demand and treatment response, providing commissioners, service providers, clinicians, service users and their families with the means to benchmark their area against other areas
- **Drug and alcohol monitoring system (DAMS)** allows drug and alcohol treatment agencies to validate and upload their treatment data during the monthly submissions to the NDTMS
- **Healthier lives – alcohol and drugs** sets out best current prevalence estimates alongside the key performance measures for treatment services, including recovery outcomes
- **Information on drug and alcohol treatment (NDTMS)** collects, collates and analyses information from and for those involved in the drug treatment sector

- **Liver disease profiles (Fingertips)** provide a range of indicators relating to the prevention, treatment and impact of liver disease, one of the main causes of premature mortality nationally
- **Local alcohol profiles for England (LAPE) (Fingertips)** provides information for local government, health organisations, commissioners and other agencies to monitor the impact of alcohol on local communities and to monitor the services and initiatives that have been put in place to prevent and reduce the harmful impact of alcohol
- **Local tobacco control profiles for England (Fingertips)** provide a snapshot of the extent of tobacco use, tobacco related harm, and measures being taken to reduce this harm at a local level
- **Tobacco return on investment tool (NICE)*** evaluates a portfolio of tobacco control interventions and models the economic returns that can be expected in different payback timescales to help decision making at local and sub-national levels

End of life care:

- **End of life care modelling tools** is a suite of tools to support end of life care commissioning and planning
- **End of life care profiles** presents indicators in table, chart and map format using the InstantAtlas mapping tool to help commissioners and providers understand the end of life care needs of their populations
- **End of life care profiles (Fingertips)** produced to improve the availability and accessibility of information around end of life care and monitor factors such as underlying cause of death, place of death, death in usual place of residence etc
- **National end of life care intelligence network (NeoLCIN)** aims to improve the collection and analysis of information related to the quality, volume and costs of care provided by the NHS, social services and the third sector to adults approaching the end of life

General health profiles:

- **European health profile tool** presents the I2SARE project data through interactive maps and charts – the purpose of the tool is to aid the comparison of health and socio-economic indicators across regions of Europe
- **European regional health profiles (I2SARE)** presents health profiles for each region of the European Union and raises the profile of sub-national institutions working on health information, to encourage exchanges and the development of networking activities between them
- **Health profiles (Fingertips)** provide a snapshot of the health of the population for each local authority in England, grouped into five domains: our communities, children's and young people's health, adults' health and lifestyle, disease and poor health, life expectancy and causes of death
- **Local health (neighbourhood) profiles** provide quality assured health information mapped at a variety of local spatial scales presented clearly for users within the health service, local government and the public

- **Small area indicators for joint strategic needs assessment** provides indicators for use by organisations carrying out joint strategic needs assessments, which include population estimates, mortality, hospitalisation, lifestyle and socio-economic data

Healthcare:

- **Atlases of variation in healthcare (NHS)*** are intended to support the understanding of variation in health and healthcare outcomes, including that which cannot be explained by patient need or preferences. By helping clinicians, commissioners and other decision makers understand what is going on in their area the Atlases can help focus attention on key areas for action
- **Care Quality Commission (CQC) intelligent monitoring bandings (NHS)** are a collection of indicators that CQC use to assess the level of risk within a practice and thus inform their inspection regime
- **Commissioning support unit (CSU) resources (NHS)*** enable clinical commissioners to focus their clinical expertise and leadership in securing the best outcomes for patients and driving up quality of NHS patient services
- **Health and Social Care Information Centre (HSCIC)** oversees collection of Hospital Episode Statistics and publishes a range of information on hospital care
- **Hospital activity data guide for clinicians (NHS)*** by the Royal College of Physicians and the HSCIC gives a useful overview of hospital activity data
- **Medicines optimisation dashboard (NHS)*** allows local NHS organisations to highlight variation in local practice and provoke discussion on the appropriateness of local care
- **National GP practice profiles (Fingertips)** present a range of health indicators for practices in England. The indicators include the Quality and Outcomes Framework (QOF), the GP Patient Survey and the attribution dataset. Over 99% of practices in England are included
- **NHS England data catalogue (NHS)*** is intended to be a one stop shop for the data NHS England requires for routine reporting: the website is primarily aimed at analysts and includes the key data that NHS England uses to conduct its core business – it also includes data from NHS England and from across the wider health system
- **NHS England statistical publications*** published statistics on a range of health and care subjects
- **Accident and emergency attendances and emergency admissions** includes data on A&E performance and emergency admissions for all A&E types, including minor injury units and walk-in centres
- **Ambulance quality indicators** provide system and clinical Indicators measuring ambulance service quality
- **Bed availability and occupancy** includes data on beds open overnight, day only beds, critical care beds and residential care beds
- **Cancelled elective operations** include data on cancelled operations and the total number of operating theatres

- **Combined performance summary** provides monthly performance statistics on NHS 111, ambulance quality indicators, A&E attendances and emergency admissions, waiting times for diagnostic tests, referral to treatment for consultant-led elective care and cancer services, and delayed transfers of care
- **Cancer waiting times** provide information of people referred by their GP with suspected cancer or breast symptoms and those subsequently diagnosed with and treated for cancer by the NHS in England
- **Child immunisation** provides a quarterly collection of immunisation coverage for three cohort age groups; 12 months, 24 months and five years by CCG
- **Consultant-led referrals to treatment (RTT) waiting times** monitor the length of time from referral through to treatment
- **Critical care bed capacity and urgent operations cancelled** provide monthly situation reports on critical care bed capacity and cancelled urgent operations
- **Delayed transfers of care** provide monthly situation reports on acute and non-acute delayed transfers of care by NHS provider, local authority, responsible organisation and reason for delay
- **Dementia assessment and referral** provides information at provider level on the number and proportion of patients aged 75 and over admitted as an emergency for more than 72 hours who have been identified as potentially having dementia, who are appropriately assessed and, where appropriate, referred on to specialist services
- **Dental commissioning** provides information about NHS dental activity commissioned by NHS England local offices, measured in units of dental activity (UDAs)
- **Diagnostic imaging dataset** is a central collection of detailed information about diagnostic imaging tests carried out on NHS patients, extracted from local radiology information systems (RISs) and submitted monthly
- **Diagnostic test waiting times and activity** provide monthly and quarterly diagnostic waiting times and activity and an annual collection on the number of imaging and radiological examinations or tests carried out during the year
- **Direct access audiology** waiting times provides direct access audiology (DAA) referral to treatment (RTT) waiting times
- **Friends and family test (FFT)** provides data on whether patients would recommend aspects of care received
- **General practice patient survey (GPPS)** provides information to patients, GP practices and commissioning organisations on a range of aspects of patients' experience of their GP services and other local primary care services
- **General practice patient survey: dental results** provide additional analysis of the dental section of GPPS to obtain a more detailed understanding of dental access and behaviours
- **Health visitor metrics** provide information on the indicative health visitor collection (IHVC) and the health visitor service delivery metrics which are designed to be used for management information only
- **Hospital activity** includes data on inpatient elective admission events and referrals as well as attendances for outpatient appointments

- **Integrated performance measures monitoring** provides a report on PCT and trust performance against plans to address selected health priorities relating to the NHS Operating Framework
- **Maternity and breastfeeding** details the number and proportion of women seen and assessed by a healthcare professional within 12 weeks and six days of their maternity, the number and proportion of mothers who have initiated breastfeeding (or not) and the number and proportion of infants who have been fully, partially or not at all breastfed at six to eight weeks
- **Mental health community teams activity** return collects data on new cases taken on in the year by early intervention (EI) in psychosis services, number of patients on care programme approach (CPA) followed up within seven days of discharge from psychiatric inpatient care and gate keeping inpatient admissions
- **Mixed sex accommodation breaches** provide data on total occurrences of unjustified mixing in relation to sleeping accommodation
- **NHS 111 minimum data set** supplies data to help assess the efficiency and effectiveness of the 111 service across all live sites
- **Overall patient experience scores** provide the latest national statistics for England for the patient experience overall measure
- **Patient reported outcome measures (PROMs)** assess the quality of care delivered to NHS patients from the patient perspective
- **Venous thromboembolism (VTE) risk assessment** supplies information on the number and proportion of admitted adult patients in England who have been risk assessed for VTE
- **Winter daily situation reports** are collected from acute trusts to indicate where there are any winter pressures on the services such as A&E closures, diverts or bed pressures – Daily Flu highlights the number of patients with confirmed or suspected influenza in critical care beds
- **Primary care web tool (NHS)*** presents general practice high level indicators and general practice outcome standards indicators (restricted access: nhs.net account and login required)

Health impact assessment:

- **Health impact assessment (HIA) gateway** provides access to resources and information on health impact assessment (HIA) for those new to HIA, practitioners of HIA and those wishing to commission HIAs or some other impact assessment process (that is integrated impact assessment, mental wellbeing impact assessment and health-related strategic environmental assessment)

Health inequalities:

- **Health inequalities gap measurement tool** provides detailed information on the nature and extent of health inequalities across England, showing inequality gaps in mortality rates within and between areas by grouping local populations according to relative levels of deprivation

- **Health inequalities intervention toolkit** provides information on diseases causing low life expectancy and high infant mortality rates in individual areas, enabling good local priority setting and assisting with evidence-based local service planning and commissioning
- **Infant mortality tool (part of the health inequalities intervention toolkit)** produces trends in infant death rates and can be used to find information on factors which may influence infant mortality
- **Life expectancy calculator: local authority and ward level** enables users with death and population data for small areas to calculate life expectancy figures
- **Longer lives (Fingertips)** provides rates of premature mortality across every local authority in England, giving people important information to help them improve their community's health
- **Marmot indicators for local authorities in England** provides baseline figures for some key indicators of the social determinants of health, health outcomes and social inequality that correspond, as closely as is currently possible, to the indicators proposed in Fair society, healthy lives
- **Potential years of life lost tool** provides a tool to help those with a healthcare public health remit in local authorities and PHE centres to work with CCGs to set their final plan 'potential years life lost' rates through to 2018/19
- **Segment tool: segmenting life expectancy gaps by cause of death** provides information on the causes of death that are driving inequalities in life expectancy at local area level.

Health protection:

- **Health protection profile (Fingertips)** provides information on a range of health protection issues from environmental hazards to infections that are preventable by vaccination, in order to inform choices regarding health and lifestyle, as well as improve awareness of local health protection risks
- **TB strategy monitoring indicators (Fingertips)** allows local information about the key TB monitoring indicators for the collaborative TB strategy 2015 to 2020 to be easily accessed

Learning disabilities:

- **Improving health and lives: learning disability** monitors the health of people with learning disabilities and the health care they receive in order to help hospitals and other providers of health and social care understand better the needs of people with learning disabilities, along with their families and carers
- **Learning disability profiles (Fingertips)** provide information which can be used by commissioners and health professionals when making decisions about services for people with learning disabilities

Long-term conditions:

- **Atlases of variation in healthcare (NHS)*** provide data to help identify variations in healthcare and priority areas for improving outcome, quality and productivity –

separate atlases are produced for respiratory disease, diabetes, liver disease and diagnostic services

- **Cardiovascular disease (CVD) commissioning for value packs** provide national benchmarked data for heart disease and stroke used to understand variation across the pathway for each clinical commissioning group in England to help improve cardiovascular disease commissioning
- **Cardiovascular (CVD) intelligence packs** provide practice level data on prevention, detection and management across a range of cardiovascular conditions – high cardiovascular (CVD) risk and hypertension, stroke and atrial fibrillation, diabetes, kidney disease, coronary heart disease and heart failure
- **Cardiovascular disease profiles** and **cardiovascular disease profiles (Fingertips)** summarise data about cardiovascular prevalence, care processes and treatment targets, variation and complications, for commissioners and health professionals to use when assessing the impact of CVD on their local population, when identifying opportunities for improvement and when making decisions about services and emerging issues
- **Children and young people diabetes community health profile** provides a diabetes profile which includes a range of data for the purpose of benchmarking
- **Chronic kidney disease (CKD) prevalence model** estimates of the total number of adults aged 16 and over in England with moderate to severe CKD (stages 3 to 5)
- **Diabetes (Fingertips)** is a companion profile for Healthier Lives: diabetes which shows trend data for CCGs and local authorities and allows users to create local authority and CCG spine charts
- **Diabetes community health profiles** provide diabetes profiles bringing together a wide range of data on diabetes in adults for the purpose of benchmarking
- **Diabetes footcare activity profiles** provide information on the inpatient care of people with diabetes admitted to hospital for foot care conditions, including episodes of care, nights in hospital, amputations and inpatient stays
- **Diabetes outcomes versus expenditure tool (DOVE)** allows spending on diabetes care to be compared with clinical outcomes by CCG
- **Diabetes prevalence model for local authorities and CCGs in England** estimates total diabetes prevalence by local authority and by CCG
- **Disease prevalence models** estimates underlying prevalence derived from population statistics and scientific research on the risk factors for each disease
- **Healthier lives: diabetes, hypertension and NHS Health Check (Fingertips)** provides mapped variation against the England average for diabetes and hypertension, and for health checks at local authority level only
- **Interactive health atlas for lung conditions in England (Inhale) (Fingertips)** provides data from a range of sources about respiratory disease (mostly COPD and asthma)
- **Long-term conditions dashboard (NHS)*** allows local NHS organisations to highlight variation in local practice and provoke discussion on the appropriateness of local care

- **Mortality among inpatients with diabetes: profiles** assess mortality among inpatients with diabetes to assess case-mix and risk factors for inpatient mortality and to identify trust level variation in the risk of an inpatient with diabetes dying
- **National cardiovascular intelligence network** analyses information and data and turns it into meaningful timely health intelligence for commissioners, policy makers, clinicians and health professionals to improve services and outcomes
- **National diabetes audit** integrates data annually from both primary and secondary care sources to help measure the effectiveness of diabetes healthcare against NICE clinical guidelines
- **National diabetes information service (legacy website)** provides a comprehensive range of diabetes data, tools and information via one web portal
- **Outcomes versus expenditure tool: cardiovascular** explores the relationship between spending on cardiovascular care and clinical outcomes
- **Variation in inpatient activity: diabetes** allows users to compare information on inpatient activity for those with and without diabetes to provide evidence on differing care patterns

Mental health

- **Mental health dementia and neurology profiles (Fingertips)** bring together a wide range of publicly available data to offer a broad picture of mental health dementia and neurology and provide the means to focus on specific topic areas
- **Children and young people's mental health and wellbeing (CYPMHW) profiling tool (Fingertips)** presents collated data on risk, prevalence and the range of health, social care and education services that support children with, or vulnerable to, mental illness
- **Co-existing substance misuse and mental health issues (Fingertips)** presents data on smoking, alcohol use and drug use, including prevalence and treatment demand and response, to inform practice around co-existing substance use and mental health issues
- **Common mental health disorders (Fingertips)** presents collated risk, prevalence, early intervention, assessment and treatment, outcomes and service costs data relating to people with common mental health disorders, including depression and anxiety disorders
- **Community mental health profiles (Fingertips)** pulls together a range of mental health data at CCG level and is principally intended to support local needs assessment, policy, planning, performance management, surveillance and practice
- **Dementia profiles (Fingertips)** provide health intelligence on dementia prevalence, prevention, diagnosis and quality of life from which to inform the provision of care of people in England with dementia
- **Neurology profiles (Fingertips)** illustrates health statistics around emergency hospital admissions for common neurological conditions and provides a more detailed analysis of an epilepsy care pathway

- **Severe mental illness (Fingertips)** presents collated risk, prevalence, early intervention, assessment and treatment, outcomes and service costs data relating to people with severe mental illness
- **Suicide prevention profile (Fingertips)** brings together nationally available data on suicide, risk factors for suicide and service contacts for groups at increased risk of suicide
- **National mental health dementia and neurology intelligence network** analyses information and data and turns it into timely meaningful health intelligence for commissioners, policy makers, clinicians and health professionals to improve services and outcomes and to reduce the negative impact of mental health, dementia and neurology problems

Obesity, nutrition and physical activity:

- **Obesity knowledge and intelligence** provides a single point of contact for wide-ranging authoritative information on data, evaluation, evidence and research related to weight status and its determinants
- **NCMP local authority profile (Fingertips)** identifies the prevalence of underweight, healthy weight, obesity and excess weight for children aged four to five (Reception Year) and ten to eleven years (Year 6)
- **Weight management economic assessment tool** is designed to help public health professionals make an economic assessment of existing or planned weight management interventions
- **Local authority adult BMI category prevalence data**, supporting indicators for the Public Health Outcomes Framework indicator on excess weight in adults
- **Data factsheets on obesity and its determinants** presents key information and data in an easily readable format
- **Data slide sets** presenting the patterns and trends in adult and child obesity, and physical activity
- **Making the case for tackling obesity - why invest?** Slides illustrating the facts and figures about obesity, the costs, the benefits of investing and the potential routes to action. An accompanying reference sheet is included
- **Briefing papers on obesity, nutrition, and physical activity** provide a summary of the current research evidence
- **Obesity tool for local authorities** provides information, data and evidence on obesity and its determinants to support policy makers and practitioners working to tackle obesity
- **Physical activity return of investment tool (NICE)*** evaluates a portfolio of interventions and models the economic returns that can be expected in different payback timescales to help decision making in physical activity programme planning at local and sub-national levels
- **Standard evaluation frameworks** provide support to ensure high quality, consistent evaluation of weight management, nutrition and physical activity interventions, in order to increase the evidence base

- [Adult obesity maps](#) show the change in prevalence of adult obesity for sub-national geographies from 1993 to 2011

Screening:

- [NHS abdominal aortic aneurysm screening programme](#) prevents premature deaths from ruptured aneurysms through early detection, appropriate monitoring and treatment (log in required)
- [NHS newborn hearing screening programme](#) identifies moderate, severe and profound deafness and hearing impairment in newborn babies (log in required)

Sexual health:

- [Sexual and reproductive health profiles \(Fingertips\)](#) presents interactive maps, charts and tables that provide a snapshot and trends at local authority and PHE Centre level of sexual and reproductive health across a range of topics including teenage pregnancy, abortions, contraception, HIV, sexually transmitted infections and sexual offences
- [HIV and STI web portal](#) provides STI (collected from GUM clinics) and chlamydia (collected from NHS laboratories and local authority commissioned laboratories) surveillance data at a local level (log in required)

Social care, adults and older people:

- [Adult social care profile \(Fingertips\)](#) provides a range of data about people who use or have the potential to use adult social care services at local authority level
- [Excess winter deaths \(EWD\) in England atlas](#) indicates whether there are higher than expected deaths in the winter compared with the rest of the year
- [Older people's health and wellbeing profile \(Fingertips\)](#) can be used to examine the health and care of older people across local authorities in England

Geographic granularity of national PHE and NHS data tools

The majority of tools listed in Appendix A1 provide data for users to access. Listed below are the geographical levels that each data tool provides information at. Only tools from Appendix A1 that provide data have been included in the table below.

34

	GP practice	Small area level	District/UA	County/UA	CCG	PCT	PHE centre (2013 and 2015)	PHE region	Region	England	Other
Cancer – general											
CancerData									Y	Y	
CancerStats				Y	Y				Y	Y	Strategic Clinical network
Cancer e-atlas						Y				Y	Strategic Clinical network
Cancer mortality profiles		Y	Y			Y				Y	Strategic Clinical network
Cancer patient experience					Y				Y*		*SHA pre-2013
Cancer services profile (Fingertips)	Y				Y						
Clinical commissioning group profiles					Y						
Clinical headline indicators											Service (multi-disciplinary team)
GP practice profiles	Y										
Local cancer intelligence tool					Y						
Routes to diagnosis of cancer					Y					Y	Strategic Clinical Network
Staging					Y					Y	
UK cancer prevalence project				Y	Y					Y	Strategic Clinical network, NHS area teams
Cancer waiting times (NHS)					Y					Y	Provider (NHS trust)
Cancer – site specific											
Cancer outcomes metrics					Y						
Cancer staging statistics					Y						
Gynaecological cancer profiles				Y	Y						

	GP practice	Small area level	District/UA	County/UA	CCG	PCT	PHE centre (2013 and 2015)	PHE region	Region	England	Other
Head and neck cancer e-atlas (profiles)									Y*		*SHA pre-2013; Cancer network
Head and neck cancer e-atlas (resources)											Cancer network (former)
Prevalence e-atlas											Cancer network (former)
Routes to diagnosis of cancer					Y					Y	Strategic Clinical Network
Skin cancer hub									Y*		*SHA pre-2013; Cancer network
Skin cancer profiles			Y		Y						
Thirty-day postoperative mortality after colorectal cancer surgery in England											NHS Trust (only outliers are named)
Urological cancer profiles			Y		Y						Cancer network (former)
Child and maternal health											
Atlas of variation in healthcare for children and young people (NHS)				Y		Y					
Breastfeeding profiles				Y					Y	Y	
Child health profiles				Y	Y				Y	Y	
Children and young people's health benchmarking tool (Fingertips)			Y	Y	Y	Y	Y		Y	Y	NHS sub-region; SCN; CCG cluster; ONS cluster group; deprivation decile; SHA
Children and young people's mental health and wellbeing (CYPMHW) profiling tool			Y	Y	Y		Y	Y	Y	Y	
Data atlas – children, young people and maternity		Y*	Y	Y	Y	Y		Y	Y	Y	*Wards, hospital, trust, SHA, NHS area team, paediatric diabetes units, neonatal network, CAMHS partnerships, cancer networks
Early years profiles				Y					Y	Y	

	GP practice	Small area level	District/UA	County/UA	CCG	PCT	PHE centre (2013 and 2015)	PHE region	Region	England	Other
Health behaviours in young people – What about YOUth?		Y*		Y			Y	Y	Y	Y	*Deprivation decile
Improving services toolkit: children with long-term conditions					Y					Y	NHS area team; NHS region
Improving services toolkit: children who are ill					Y					Y	NHS area team; NHS region
Infant mortality and Stillbirths profiles				Y	Y				Y	Y	
JSNA navigator – children and young people			Y	Y	Y				Y	Y	
Needs assessment reports – CAMHS, disability, continence, demographic profile, maternity, speech and language			Y	Y	Y				Y	Y	
NHS atlas of variation on healthcare for children and young people				Y		Y*				Y	Most indicators are for PCTs
Outcomes versus expenditure tools – CAMHS, child health, maternity and newborn				Y		Y					
QIPP resource packs – child health, maternity						Y					
School-age children profiles				Y					Y	Y	
Service snapshots – CAMHS, disability, infant mortality, maternity, obesity, teenage pregnancy and vaccination and immunisation				Y	Y	Y			Y	Y	
Teenage Parent Outcomes Modelling Tool		Y*		Y				Y		Y	Ward level

	GP practice	Small area level	District/UA	County/UA	CCG	PCT	PHE centre (2013 and 2015)	PHE region	Region	England	Other
Topical reports – accident prevention, early years, school-age children, youth justice				Y					Y	Y	
Young people's profiles				Y					Y	Y	
Comparison, practice and performance											
Commissioning for value packs					Y						
National general practice profiles (Fingertips)	Y				Y					Y	
Public health outcomes framework (Fingertips)			Y	Y			Y*		Y	Y	*2015 only
Spend and outcome tool (SPOT)				Y	Y						
Strategic health asset planning and evaluation (SHAPE)	Y	Y*		Y	Y						*LSOA NHS sub region; NHS area team; ward; parliamentary constituency
Drugs, alcohol and tobacco											
Alcohol return on investment tool (NICE)				Y					Y		
Alcohol learning centre data tools				Y		Y					
Co-existing substance misuse and mental health issues				Y			Y	Y	Y	Y	
Drug and alcohol monitoring system (DAMS)				Y					Y	Y	
Healthier lives – alcohol and drugs			Y	Y						Y	
Information on drug and alcohol treatment (NDTMS)				Y					Y	Y	

	GP practice	Small area level	District/UA	County/UA	CCG	PCT	PHE centre (2013 and 2015)	PHE region	Region	England	Other
Liver disease profiles (Fingertips)			Y	Y	Y		Y	Y	Y	Y	
Local alcohol profiles for England (LAPE) (Fingertips)			Y	Y	Y		Y	Y	Y	Y	
Local tobacco control profiles for England (Fingertips)			Y	Y		Y	Y	Y	Y	Y	
Tobacco return on investment tool (NICE)				Y					Y		
End of life care											
End of life care profiles				Y	Y					Y	
End of life care profiles (Fingertips)		Y*		Y			Y	Y	Y	Y	*Deprivation decile
General health profiles											
European health profile tool									Y		
European regional health profiles (I2SARE)									Y		
Health profiles (Fingertips)			Y	Y			Y	Y	Y	Y	
Local health (neighbourhood) profiles		Y*	Y	Y	Y		Y**	Y		Y	*Ward, LSOA, MSOA **2013 only
Small area indicators for joint strategic needs assessment		Y*	Y	Y	Y		Y**	Y		Y	*Ward, LSOA, MSOA **2013 only
Healthcare											
Atlases of variation in healthcare (NHS)			Y	Y	Y						NHS area team, NHS region, Neonatal network, SHE, NHS trust, paediatric diabetes unit
Care Quality Commission (CQC) intelligent monitoring bandings	Y										
Medicines optimisation dashboard					Y						NHS are team, Academic health science

	GP practice	Small area level	District/UA	County/UA	CCG	PCT	PHE centre (2013 and 2015)	PHE region	Region	England	Other
(NHS)											network, NHS cluster, NHS trust
National GP practice profiles (Fingertips)	Y				Y					Y	
Accident and emergency attendances and emergency admissions										Y	NHS trust
Ambulance quality indicators											NHS ambulance service
Bed availability and occupancy											NHS trust, NHS region
Cancelled elective operations											NHS trust, NHS region
Combined performance summary				Y	Y					Y	NHS region, NHS trust, NHS ambulance service
Cancer waiting times					Y					Y	NHS trust
Child immunisation					Y					Y	
Consultant-led referrals to treatment (RTT) waiting times					Y					Y	NHS region, NHS trust
Critical care bed capacity and urgent operations cancelled										Y	NHS trust
Delayed transfers of care				Y						Y	NHS region, NHS trust
Dementia assessment and referral										Y	NHS acute trusts, community services and other providers
Dental commissioning										Y	NHS region, NHS area team
Diagnostic imaging dataset										Y	NHS trust
Diagnostic test waiting times and activity										Y	NHS trust
Direct access audiology					Y					Y	NHS region, NHS trust
Friends and family test (FFT)					Y					Y	NHS region, NHS trust
General practice patient survey (GPPS)	Y				Y					Y	

	GP practice	Small area level	District/UA	County/UA	CCG	PCT	PHE centre (2013 and 2015)	PHE region	Region	England	Other
General practice patient survey: dental results	Y				Y					Y	
Health visitor metrics										Y	NHS region
Hospital activity					Y					Y	NHS region, NHS trust
Integrated performance measures monitoring						Y					SHA, NHS trust
Maternity and breastfeeding					Y					Y	NHS region, NHS area team
Mental health community teams activity					Y					Y	NHS region, NHS area team
Mixed sex accommodation breaches					Y					Y	NHS region, NHS trust, NHS site
NHS 111 minimum data set										Y	NHS Region, NHS 111 site
Overall patient experience scores										Y	
Patient reported outcome measures (PROMs)					Y					Y	NHS trust
Venous thromboembolism (VTE) risk assessment										Y	NHS trust
Winter daily situation reports										Y	NHS trust
Health inequalities											
Health inequalities gap measurement tool				Y		Y			Y*	Y	*Former GOR and SHA
Health inequalities intervention toolkit				Y					Y*		*Former SHA England and Wales
Infant mortality tool (part of the health inequalities intervention toolkit)				Y					Y*		*Former SHA England and Wales
Life expectancy calculator: local authority and ward level		Y	Y						Y		Ward
Longer lives (Fingertips)			Y	Y							

	GP practice	Small area level	District/UA	County/UA	CCG	PCT	PHE centre (2013 and 2015)	PHE region	Region	England	Other
Marmot indicators for local authorities in England				Y							
Potential years of life lost tool			Y		Y						
Segment tool: segmenting life expectancy gaps by cause of death			Y	Y					Y	Y	
Health protection											
Health protection profile (Fingertips)			Y	Y		Y	Y	Y	Y	Y	
TB Strategy Monitoring Indicators (Fingertips)				Y			Y*	Y	Y	Y	*2013 only
Learning disabilities											
Improving health and lives: learning disability										Y*	*Estimates only
Learning disabilities profiles (Fingertips)	Y			Y	Y		Y	Y	Y	Y	
Long term conditions											
Atlases of variation in healthcare (NHS)			Y	Y	Y						NHS area team, NHS region, Neonatal network, SHE, NHS trust, paediatric diabetes unit
Cardiovascular (CVD) intelligence packs					Y						
Cardiovascular disease profiles and cardiovascular disease profiles (Fingertips)	Y			Y	Y		Y	Y	Y	Y	SCN
Children and young people diabetes community health profile						Y				Y	NHS Trust
Chronic kidney disease (CKD) prevalence model			Y	Y	Y				Y	Y	

	GP practice	Small area level	District/UA	County/UA	CCG	PCT	PHE centre (2013 and 2015)	PHE region	Region	England	Other
CKD											
Diabetes (Fingertips)	Y			Y	Y		Y	Y	Y		
Diabetes community health profiles					Y	Y				Y	
Diabetes footcare activity profiles					Y	Y				Y	NHS region
Diabetes outcomes versus expenditure tool (DOVE)	Y				Y						
Diabetes prevalence model for local authorities and CCGs in England				Y	Y						'Define your own area tool' (below upper tier LA)
Disease prevalence models											
Healthier lives: diabetes, hypertension and NHS Health Check (Fingertips)				Y	Y*						Health Check data is at county/UA level only
Interactive health atlas for lung conditions in England (inhale) (Fingertips)	Y			Y	Y		Y	Y	Y	Y	
Mortality among inpatients with diabetes: profiles										Y	NHS trust
National diabetes audit	Y				Y					Y	NHS trust
Outcomes versus expenditure tool: cardiovascular					Y						
Variation in inpatient activity: diabetes					Y	Y					
Mental health											
Children and young people's mental health and wellbeing (CYPMHW) profiling tool (Fingertips)			Y	Y	Y		Y	Y	Y	Y	
Co-existing substance misuse and mental health issues (Fingertips)				Y			Y	Y	Y	Y	

	GP practice	Small area level	District/UA	County/UA	CCG	PCT	PHE centre (2013 and 2015)	PHE region	Region	England	Other
Common mental health disorders (Fingertips)			Y	Y	Y				Y	Y	SCN; NHS sub region; CCG clusters
Community mental health profiles (Fingertips)	Y				Y				Y	Y	SCN; NHS sub region; CCG clusters
Dementia profiles (Fingertips)		Y*		Y	Y		Y	Y	Y	Y	*deprivation decile
Neurology profiles (Fingertips)					Y				Y	Y	SCN; NHS sub region; CCG clusters
Severe mental illness (Fingertips)			Y	Y	Y		Y		Y	Y	Mental health trust; commissioning region
Suicide prevention profile (Fingertips)				Y	Y		Y		Y	Y	
Obesity, nutrition and physical activity											
NCMP local authority profile (Fingertips)			Y	Y					Y		
Local authority adult BMI category prevalence data				Y	Y				Y	Y	
Obesity tool for local authorities				Y							
Physical activity return of investment tool (NICE)				Y					Y		
Adult obesity maps									Y		
Screening											
NHS abdominal aortic aneurysm screening programme											
NHS newborn hearing screening programme											
Sexual health											
Sexual and reproductive health profiles (Fingertips)			Y	Y			Y	Y	Y	Y	

	GP practice	Small area level	District/UA	County/UA	CCG	PCT	PHE centre (2013 and 2015)	PHE region	Region	England	Other
HIV and STI web portal				Y			Y				
Social care, adults and older people											
Adult social care profile (Fingertips)				Y					Y	Y	
Excess winter deaths (EWD) in England atlas			Y						Y	Y	
Older people's health and wellbeing atlas			Y	Y					Y	Y	

Appendix A2 National PHE health protection data tools resources

Data and resources relating to an A-Z of infectious diseases can be accessed [here](#) and through the individual links below.

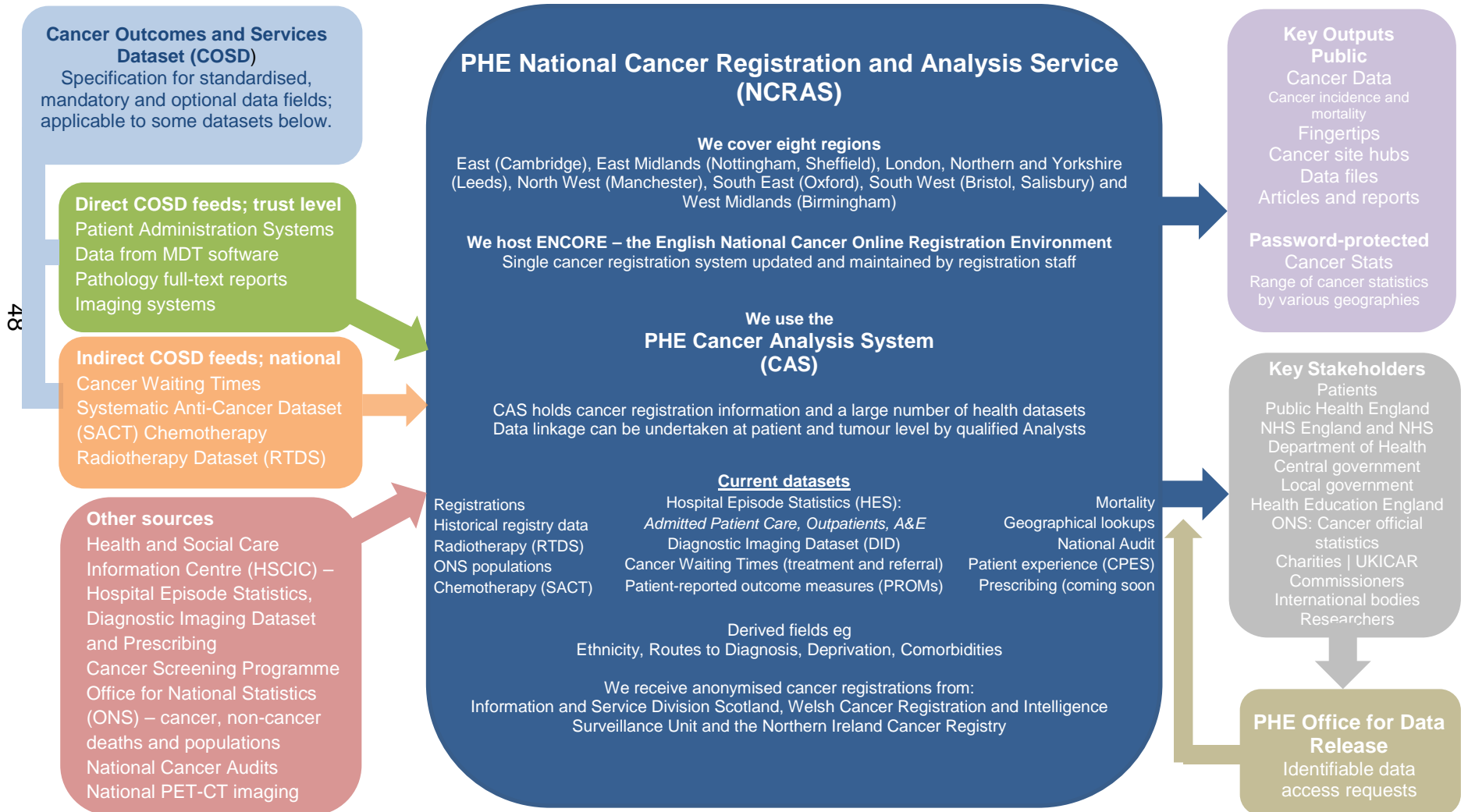
- Acinetobacter species
- Anthrax: guidance, data and analysis
- Avian influenza: guidance, data and analysis
- Bacillus species (food poisoning)
- Bacteraemia
- Bartonella
- Bloodborne infections in blood and tissue donors (BIBD): guidance, data and analysis
- Bloodborne viruses in healthcare workers: report exposures and reduce risks
- Botulism: diagnosis, data and analysis
- Brucellosis
- Campylobacter: guidance, data and analysis
- Carbapenem resistance: guidance, data and analysis
- Chickenpox: public health management and guidance
- Chikungunya
- Chlamydia: surveillance, data, screening and management
- Chlamydomydia abortus
- Cholera
- Clostridium difficile: guidance, data and analysis
- Clostridium perfringens
- Creutzfeldt-Jakob disease (CJD): guidance, data and analysis
- Cryptosporidiosis: guidance, data and analysis
- Dengue fever: guidance, data and analysis
- Diphtheria: guidance, data and analysis
- Ebola virus disease: clinical management and guidance
- Enterococcus species and glycopeptide-resistant enterococci (GRE)
- Escherichia coli (E. coli): guidance, data and analysis
- Extended-spectrum beta-lactamases (ESBLs): guidance, data, analysis
- Fungal infections
- Gastrointestinal infections: guidance, data and analysis
- Genital herpes
- Genital warts and human papillomavirus (HPV): guidance, data and analysis
- Giardia: guidance and data
- Gonorrhoea (Neisseria gonorrhoeae): guidance, data and analysis
- Group A streptococcal infections: guidance and data
- Group B streptococcal infections: guidance, data and analysis
- Group C and group G streptococcus: guidance, data and analysis
- HIV: surveillance, data and management
- Haemophilus influenzae: guidance, data and analysis
- Hantaviruses

- Head lice (pediculosis)
- Healthcare associated infections (HCAI): guidance, data and analysis
- Helicobacter pylori
- Hepatitis A: guidance, data and analysis
- Hepatitis B: guidance, data and analysis
- Hepatitis C: guidance, data and analysis
- Hepatitis E: guidance, data and analysis
- Human T cell lymphotropic virus (HTLV)
- Human parainfluenza viruses: guidance and data
- Impetigo: guidance, data and analysis
- Infectious diseases during pregnancy: screening, vaccination and treatment
- Klebsiella species
- Legionnaires' disease: guidance, data and analysis
- Leprosy
- Leptospirosis
- Listeria: guidance, data and analysis
- Lyme disease: guidance, data and analysis
- Lymphogranuloma venereum (LGV): guidance, data and analysis
- Malaria: guidance, data and analysis
- Measles: guidance, data and analysis
- Meningococcal disease: guidance, data and analysis
- Middle East respiratory syndrome coronavirus (MERS-CoV): clinical management and guidance
- Mumps: guidance, data and analysis
- Mycoplasma
- Necrotising fasciitis (NF)
- Norovirus: guidance, data and analysis
- Orf: characteristics and diagnosis
- Pandemic flu: public health response
- Pantan-Valentine Leukocidin (PVL): guidance, data and analysis
- Parvovirus B19: guidance, data and analysis
- Pasteurellosis
- People who inject drugs: infection risks, guidance and data
- Pertussis: guidance, data and analysis
- Pneumococcal disease: guidance, data and analysis
- Polio: guidance, data and analysis
- Pontiac fever
- Pseudomonas aeruginosa: guidance, data and analysis
- Psittacosis
- Rabies: risk assessment, post-exposure treatment, management
- Rat-bite fever
- Respiratory syncytial virus (RSV): guidance, data and analysis
- Respiratory viruses

- Rotavirus: guidance, data and analysis
- Rubella (German measles): guidance, data and analysis
- Salmonella: guidance, data and analysis
- Scarlet fever: guidance and data
- Seasonal influenza: guidance, data and analysis
- Sexually transmitted infections (STIs): surveillance, data, screening and management
- Shigella: guidance, data and analysis
- Shingles: guidance and vaccination programme
- Staphylococcus aureus: guidance, data and analysis
- Stenotrophomonas maltophilia
- Streptococcal infections
- Surgical site infection (SSI): guidance, data and analysis
- Syphilis: surveillance, data and management
- Tetanus: guidance, data and analysis
- Tickborne encephalitis (TBE)
- Toxoplasmosis
- Tuberculosis and other mycobacterial diseases: diagnosis, screening, management and data
- Typhoid and paratyphoid: guidance, data and analysis
- Unusual illness: investigation and management of outbreaks and incidents
- Vero cytotoxin-producing Escherichia coli (VTEC): guidance, data and analysis
- Viral haemorrhagic fevers: epidemiology, characteristics, diagnosis and management
- West Nile virus
- Zoonotic diseases (zoonoses): guidance, data and analysis

Appendix A3 PHE National Cancer Registration and Analysis Service (NCRAS) data flows

The diagram below illustrates how the National Cancer Registration and Analysis Service (NCRAS) collects and organises cancer data, and transforms it into intelligence. NCRAS delivers a world-class cancer registration service for England and undertakes analyses to drive improvements in prevention, standards of care and clinical outcomes for cancer patients.



Appendix A4 National PHE sexually transmitted infections and HIV data tools and resources

This table is reproduced from [Sexual and reproductive health in England: a guide to local and national data](#) (Revised Dec 2014).

Dataset	Description	Frequency	Geographical coverage	Source	More information
Genitourinary medicine clinic activity dataset (GUMCADv2)	Pseudo-anonymised patient level electronic dataset collecting information on diagnoses made and services provided	Quarterly	National Clinic Local authority	Level 3 (GUM) and level 2 sexual health services	Starter pack Guidance to clinical staff Technical guidance and specification GUM/CADv2 FAQs
Chlamydia testing activity dataset (CTAD)	Confidential patient level electronic dataset collecting information on chlamydia testing and diagnoses	Quarterly	National Local authority	Commissioned laboratories	Briefing document and FAQs Commissioning guidance
HIV and AIDS new diagnoses database (HANDD)	Reports of new HIV diagnoses, AIDS and deaths	Annual	National Clinic Local authority	Clinicians and microbiologists	Metadata
Survey of prevalent HIV infections diagnosed (SOPHID)	People seen for HIV care	Annual (six monthly in London)	National Clinic	HIV outpatient clinics	Metadata
CD4 surveillance scheme	Reports of CD4 cell count measures	Annual	National Clinic Laboratory	Microbiologists	Metadata

Dataset	Description	Frequency	Geographical coverage	Source	More information
HIV and AIDS reporting system (HARS)	Information on patients diagnosed with HIV infection attending HIV outpatient care	Quarterly	National Clinic	HIV outpatient clinics	<p>Data dictionary</p> <p>Technical and behavioural manual</p> <p>Site codes</p> <p>This dataset is intended to replace HANDD and SOPHID</p>

Appendix B. Signposting to regional health intelligence resources

Appendix B1 Datasets and resources held by the Local and Knowledge Intelligence Service West Midlands

PHE Local Knowledge and Intelligence Service (LKIS) in the West Midlands hold a range of datasets that can be used to support action to protect and improve health and reduce health inequalities. Datasets held by LKIS West Midlands are listed in the table below. Some of these datasets, such as the PHE population database, have been created primarily to support internal LKIS analysis, but may also be used to address enquiries from external users as appropriate.

Dataset	Description	Level	Frequency	Release subject to data sharing agreement
Public health birth file	Statutory birth registrations	Anonymised record level with some restrictions on fields released to PHE.	Annual	Yes
Public health mortality file	Statutory death registrations	Anonymised record level	Annual	Yes
Hospital episode statistics (HES)	Record of episodes of hospital care: inpatient, A&E, maternity, critical care, outpatients	Pseudonymised record level	PHE extract: 2004/05 – 2015/16 Updated monthly, lags two months behind current date	Yes
GP practice populations (attribution dataset)	Extract of GP practice population counts published by HSCIC from NHAIS – Exeter system	GP practice level, five-year age bands by gender		No
PHOLIO database	Range of data sets that underpin the Fingertips online health data tool	Geography varies but not lower than local authority district or CCG	Wide range of datasets updated at intervals throughout year	No – all available for download from Fingertips site

Dataset	Description	Level	Frequency	Release subject to data sharing agreement
THIN primary care research data extract	Extract of GP patient records from participating practices	Record level		Yes
GP practice populations (attribution dataset)	Extract of GP practice population counts published by HSCIC from NHAIS – Exeter system	GP practice level, five-year age bands by gender		No
PHOLIO database	Range of data sets that underpin the Fingertips online health data tool	Geography varies but not lower than local authority district or CCG	Wide range of datasets updated at intervals throughout year	No – all available for download from Fingertips site
THIN primary care research data extract	Extract of GP patient records from participating practices	Record level		Yes

Appendix B2 Datasets and resources held by the West Midlands Field Epidemiology Service (WMFES)

The WMFES has access to a variety of data and tools which can help with vaccine preventable disease (VPD) and Immunisation data analysis. It should also be noted that they do not have direct access to some information which would be of use to the SITs. Resources that the WMFES can and cannot access are shown in the table below.

Information or tool	Description	Level	Frequency
Vaccine preventable disease and immunisation data/tools the WMFEU can access			
HPZone	A web-based system used by local health protection teams to manage incidents of infectious disease. Data from HPZone gives an idea of the activity seen by the local health services.	Individual cases (record level) and outbreaks for Staffordshire and Shropshire/Birmingham, Solihull, Coventry and Warwickshire/and The Black Country, Hereford and Worcester HPTs.	Live system
ImmForm	A web-based system used by the DH, the NHS and PHE to record data in relation to uptake against immunisation programmes and incidence of flu-like illness; and to provide vaccine ordering facilities for the NHS.	Practice and CCG but dependent on programme for West Midlands.	As per programme schedule
COVER	The COVER programme monitors immunisation coverage data for children in the UK who reach their first, second or fifth birthday during each evaluation quarter.	Old PCTs and local authorities (quality needs to improve) for all in England.	Quarterly and annually
GP-level COVER data via UNIFY2	Collection on the immunisation coverage for three cohort age groups; 12 months, 24 months and five years.	Practice (via NHS England) and CCG for West Midlands area teams.	Quarterly and annually

Information or tool	Description	Level	Frequency
Meningococcal Reference Unit data	Laboratory results of specimens sent to the Meningococcal Reference Unit.	Staffordshire and Shropshire/Birmingham, Solihull, Coventry and Warwickshire/and The Black Country, Hereford and Worcester HPTs.	As required
Nationally confirmed VPD data	On request the WMFES can obtain confirmed cases of measles, mumps, rubella and pertussis data from Health Protection Services, Colindale, who record laboratory confirmed cases tested by their reference laboratory. The data can be different from the HPZone data as they only include cases which meet specific criteria.	Staffordshire and Shropshire/Birmingham, Solihull, Coventry and Warwickshire/and The Black Country, Hereford and Worcester HPTs.	As required
SelectSurvey	SelectSurvey is a web-based tool for creating online surveys. It lets you distribute surveys by email or a web page, create reports of all responses and supports the collection of sensitive and non-sensitive information.	As required	As required
ArcGIS	ESRI's ArcGIS for Desktop is the Geographical Information System product standard and main portal for accessing and analysing spatial data within PHE.	As required	As required

Information or tool	Description	Level	Frequency
Vaccine preventable disease and immunisation data/tools the EFES cannot access			
Record level immunisation data	The WMFES does not currently have direct access to record level immunisation data (unless recorded as part of an outbreak or case of VPD).	If SITs have access to record level immunisation data the WMFES can provide support with its analysis. In the future record level data may be available via the maternity and children's dataset but access to this is as yet unclear.	
LSOA/MSOA immunisation data	The WMFES does not currently have direct access to immunisation data at these levels (unless recorded as part of an outbreak or case of VPD).	If screening and immunisations teams have access to level immunisation data at these levels the WMFES can provide support with its analysis. In the future record level data may be available via the maternity and children's dataset, but access to this is as yet unclear.	
Hospital episode statistics (HES) data	The WMFEU does not currently have direct access to record level HES data. The WMFEU can only access what is routinely published.	LKIS West Midlands and Midlands and East NHS England analytical team should have access to record level data and provide support with regard to queries.	
Mortality data	The WMFEU does not currently have direct access to record level mortality data. The WMFEU can only access what is routinely published.	LKIS West Midlands and Midlands and East NHS England analytical team should have access to record level data and provide support with regard to queries.	

Appendix B3 Datasets and resources held by PHE West Midlands National Drug and Alcohol Treatment Monitoring System (NDTMS)

NDTMS (WM) collects, QAs and reports on substance misuse treatment in the West Midlands. Datasets held by NDTMS (WM) are listed below.

Information or Tool	Description	Level	Frequency
NDTMS local extracts	Substance misuse treatment data for clients treated in the West Midlands or East midlands.	PID record level dataset.	Updated/submitted monthly
NDTMS repatriated datasets	Substance misuse treatment data for clients resident in the West Midlands or East Midlands, regardless of where their treatment takes place in the country.	PID record level dataset.	Quarterly
NDTMS secure settings	Substance misuse treatment data for clients treated in the West Midlands or East midlands secure settings.	PID record level dataset.	Updated/submitted monthly

56

Appendix B4 Datasets held by local authorities in the West Midlands

Dataset	Description	Level	Frequency	Release subject to data sharing agreement
National Child Measurement Programme (NCMP)	All England collection of data on primary school children's height and weight for monitoring of BMI.	Pseudonymised record level.	Annual	Yes
Hospital episode statistics (HES)	Record of episodes of hospital care: inpatient, A&E, maternity, critical care, outpatients.	Some local authorities in the West Midlands now have access to HES data. Please contact the individual local authority using the contact details listed in 0 for more information.		

Appendix C. Accessing health intelligence support and advice

Appendix C1 Summary of health intelligence support provided regionally by organisation

Organisation	Open access, no charge	Restricted access, no charge	Open access, some charges may be incurred	Any other requests for analytical support	Contact
PHE Local Knowledge and Intelligence Service (LKIS) WM	<p>Open access health intelligence resources and tools.</p> <p>Signposting and support in use of PHE health resources.</p>	<p>Bespoke data extraction and analysis service primarily provided to support PHE centres and public health teams in local authorities.</p> <p>Some bespoke analytical work may be undertaken on behalf of CCGs but only in support of the local authority analytical service.</p> <p>Some bespoke analytic work may be provided to NHS England partners, but only on agreement and with the support of the NHS England Analytical Team and the local PHE centre.</p>	<p>PHE holds, or has access to, a number of health datasets. See Appendix B1 for full list.</p> <p>Any organisation may apply to access this data, but all extracts will be subject to information governance rules designed to protect the confidentiality of individuals. Some data extracts may incur a charge.</p>	<p>Any other requests for bespoke analytical support from other organisations will be considered on a case by case basis. These will only be undertaken if capacity allows and are likely to incur a charge.</p>	<p>Please email: LKISWestMidlands@phe.gov.uk</p>

Organisation	Open access, no charge	Restricted access, no charge	Open access, some charges may be incurred	Any other requests for analytical support	Contact
PHE West Midlands Field Epidemiology Service (FES)	Signposting and support in use of PHE health protection resources.	Surveillance reports and analysis for use by clinical, commissioning and other health service colleagues. Epidemiological support in outbreak and incident investigation.			PHE West Midlands Field Epidemiology Service reuinfo@phe.gov.uk
PHE West Midlands National Drug and Alcohol Treatment Monitoring Service (NDTMS)	Open access to co-existing substance misuse and mental health profiles.	Routine and bespoke analysis to support commissioners and providers of substance misuse services.			. The NDTMS can be contacted on WestMidlands.NDTMS@phe.gov.uk
NHS England analytical team	Open access to published statistics. Signposting and support in use of NHS England health resources.	Bespoke data extraction and analysis for NHS England area teams. Joint projects between NHS England area teams and other local partner organisations (LA/CCG).		Any other requests for access to existing but restricted NHS England products will be considered on a case by case basis and only undertaken if capacity and	Public health: rowansmith@nhs.net Strategic clinical network: simon.parker1@nhs.net

Organisation	Open access, no charge	Restricted access, no charge	Open access, some charges may be incurred	Any other requests for analytical support	Contact
	Future access to NHS England data catalogue.			information governance restrictions permit.	

Appendix C2 Summary of local authority resources and contacts in the West Midlands

Several local authorities in the West Midlands have local health intelligence observatories. The observatories provide shared research knowledge bases that allow users an easy way to access and share data, information and research for deeper insights about their local area (not to be confused with the now disbanded Association of Public Health Observatories). Each local authority also produces a joint strategic needs assessment (JSNA), which provides insights into the health, wellbeing and needs of the local community and in how they respond with effective commissioning of services to properly meet those needs.

Local authority	Joint strategic needs assessment	Local observatory	Public health analytical lead
Birmingham	http://birminghampublichealth.co.uk/page.php?pid=202&mid=204	www.birminghampublichealth.co.uk	Amanda Lambert, senior information manager
Coventry	www.coventry.gov.uk/info/175/data_and_reports/2505/joint_strategic_needs_assessment_2015	www.coventry.gov.uk/publichealth	Andy Baker, insight manager (intelligence)
Dudley	www.dudley.gov.uk/community/initiatives/health-wellbeing	www.allaboutdudley.info	Angela Moss, senior public health intelligence specialist
Herefordshire	https://factsandfigures.herefordshire.gov.uk/understanding-herefordshire	https://factsandfigures.herefordshire.gov.uk/	Latha Unny, research and intelligence manager
Sandwell	www.sandwelltrends.info/themedpages/Health/JSNA	www.sandwelltrends.info	Valerie de Souza, consultant in public health-research, intelligence and health protection
Shropshire	www.shropshire.gov.uk/joint-strategic-needs-assessment	https://shropshire.gov.uk/facts-and-figures	Emma Sandbach, public health specialist
Solihull	www.solihull.gov.uk/About-the-Council/Statistics-data/JSNA	www.solihull.gov.uk/About-the-Council/Statistics-data/solihullobservatory	Angie Collard
Staffordshire	www.staffordshireobservatory.org.uk/publications/healthandwellbeing/yourhealt	www.staffordshireobservatory.org.uk	Divya Patel, senior epidemiologist

Local authority	Joint strategic needs assessment	Local observatory	Public health analytical lead
	hinstaffordshire.aspx		
Stoke on Trent	http://webapps.stoke.gov.uk/jsna/	www.healthycity-stoke.co.uk/pages/health-statistics	Paul Trinder, senior epidemiologist
Telford and Wrekin	www.telford.gov.uk/info/20121/facts_and_figures/424/joint_strategic_needs_assessment_jsna	www.telford.gov.uk/factsandfigures	Helen Potter, research and intelligence manager
Walsall	www.walsallintelligence.org.uk/themedpages-walsall/JSNA	www.walsallintelligence.org.uk	Martin Ewin, public health intelligence manager
Wolverhampton	www.wolverhampton.gov.uk/article/3647/Joint-Strategic-Needs-Assessment-JSNA	www.wolverhamptonintelligence.org.uk	Jason Gwinnett, principal public health information analyst
Warwickshire	http://publichealth.warwickshire.gov.uk/home/health/jsna/	www.warwickshireobservatory.org	Paul Kingswell, public health intelligence analyst
Worcestershire	www.worcestershire.gov.uk/info/20122/joint_strategic_needs_assessment	www.worcestershire.gov.uk/info/20043/health_and_well-being	Janette Fulton, information analyst principle

Appendix C3 Summary of Local Knowledge and Intelligence Service (LKIS) contacts in the West Midlands: place-based leads

The Knowledge and Intelligence (K&I) Service forms part of the Chief Knowledge Officer (CKO) Directorate within Public Health England. The K&I Service delivers six core functions:

- Public Health Data Science,
- Epidemiology and Surveillance,
- Risk Factor Surveillance,
- Health Economics and Health Intelligence Networks
- Clinical epidemiology
- Local Knowledge and Intelligence Service

Collectively, the K&I Service produces and interprets information to identify priorities and advocate opportunities for action. The K&I Service works closely with other functions within CKO and PHE to deliver an integrated service to support national and local action to improve health.

The PHE Local Knowledge and Intelligence Service (LKIS) have lead analysts and knowledge transfer staff assigned to local authorities within the region to ensure that work has a place-based focus.

The purpose of a place-based focus

- to develop closer working relationships between public health knowledge and intelligence (K&I) staff in PHE and in local authorities
- to better support local authority public health K&I staff in accessing and influencing PHE K&I support
- to enable LKIS staff to better support local PHE colleagues in understanding the health needs and outcomes of local authority populations

The role of LKIS 'place' leads

- to establish regular links with local authority public health K&I teams, for example, through attendance at team meetings or shadowing (by local authority or by PHE staff)

- to capture and feedback intelligence on K&I issues and needs facing local authorities in the region
- to work with local authority K&I staff to deliver training for the wider local authority team on K&I issues as appropriate
- to support PHE Centre colleagues in understanding local authority population health needs through interpretation of available health data following an agreed template

What is not part of the LKIS 'place' lead role?

- the LKIS place leads will not replace the existing mechanisms for local authorities to access analytical support, namely the local enquiry service and via the Area Liaison Group – any requests for support should continue to be sent to LKISWestMidlands@phe.gov.uk rather than directly to a place lead: this is to ensure a rapid response to users – the enquiry service email is always monitored – and to ensure that all enquiries are logged
- when considering requests for support, the underpinning principles shown below will continue to be applied

Box 11. Place based working prioritisation principles

Whether:

- the request can be met by signposting to existing resources
- the request could be better dealt with by a local partner organisation
- a request for data can be met in a way that conforms to current data sharing agreements meets the National Statistics and other standards on confidentiality
- the request can be met by the LKIS current capacity within the required timeframe
- the request aligns with priorities that have been collectively agreed locally, that align with national PHE priorities, or that relate to a wide geographical area, such as that covered by a PHE centre or NHS England Strategic Clinical Network
- the request for intelligence may be addressed by a future project output from a national or local work programme, which would render new/immediate analysis unnecessary
- responding to the request will require innovation in the analysis, interpretation or presentation that could usefully be applied to other issues or used by others
- adoption of a 'do once and share approach' or the development of case study exemplars would be helpful in avoiding duplication and promoting consistency

- the request represents common health intelligence support needs that could best be addressed nationally or by other parts of the system outside the LKIS area

Appendix D. Summary of health intelligence support provided locally by resource type

Appendix D1 Guidance on how and where to seek support and advice on public health data and analysis

The table below is designed to help users specifically seeking data and analytical tools and resources.

I am based in...	Search available online health intelligence resources	Seek local analytical support and advice	Seek additional or specialist analytical help
..a local authority	<p>Have you checked the local JSNA or local insight or observatory site? See 0.</p> <p>Try checking the PHE data and analysis tools page and other online resources.</p> <p>Try checking the data and analytical resources listed in Appendix A and Appendix B.</p>	<p>Seek help from your local authority analytical team (see 0).</p>	<p>If the data you are seeking is not held by the local authority, or if it is a common query where there would be benefit in carrying out the analysis for more than one area at once, your analytical team may advise on whether seeking further support including that from PHE or NHS England would be appropriate.</p>
..a CCG	<p>Have you checked NHS England's CCG resources website?</p> <p>The PHE data and analysis tools page has a range of resources relevant to CCG commissioning.</p> <p>The HSCIC has a variety of CCG level data.</p>	<p>Seek help from your local commissioning or performance information analyst or commissioning support unit.</p> <p>For more information in the West Midlands see: Midlands and Lancashire Commissioning Support Unit or Arden and GEM CSU</p>	<p>If the issue relate to public health, your local authority healthcare public health service contact can provide advice and also advise on whether seeking further support including that from PHE or NHS England would be appropriate.</p>

I am based in...	Search available online health intelligence resources	Seek local analytical support and advice	Seek additional or specialist analytical help
	Other tools that have CCG level data are listed in 0.		
..PHE centre (excluding screening and immunisation teams embedded in NHS England).	<p>Have you checked the PHE data and analysis tools page for the information you are seeking? The page lists a large number of profiles and resources and can be used to answer many common queries.</p> <p>Additional resources are also listed in Appendix A1.</p>	<p>Contact the LKIS WM enquiry service on LKISWestMidlands@phe.gov.uk for advice and analytical support. All queries should go through the enquiry service mailbox as this allows us to monitor requests for support and our speed of response. The mailbox is also regularly monitored and so is a more reliable route to gaining support than using individual e-mail addresses.</p> <p>Specialist analytical support may also be required from the PHE Field Epidemiology Service WM reuinfo@phe.gov.uk or NDTMS West Midlands WestMidlands.NDTMS@phe.gov.uk</p>	<p>Depending on the nature of the health intelligence support you are seeking, you may be advised to seek support from NHS England analytical team. This will be necessary, for example, for queries which can only be answered using data held by NHS England. The LKIS can advise you on when additional support will be required from outside PHE.</p>

I am based in...	Search available online health intelligence resources	Seek local analytical support and advice	Seek additional or specialist analytical help
<p>..an NHS England area team</p> <p>(including PHE screening and immunisation teams embedded in NHS England).</p>	<p>Have you checked the relevant NHS England publication or NHS England data catalogue to see if what you are seeking can be sourced from existing online resources?</p> <p>Additional resources are also listed in Appendix A.</p>	<p>To seek help from the NHS England area team in the West Midlands contact rowansmith@nhs.net</p>	<p>Depending on the nature of the health intelligence support you are seeking, it may be appropriate that additional support is provided by PHE. This may include, for example, analysis of PHE held data or investigation of topics of particular relevance to public health. The NHS England analytical team can advise when seeking PHE analytical support would be appropriate.</p>
<p>..an NHS England Strategic Clinical Network</p>	<p>Have you checked the relevant health intelligence network site to see if what you are seeking can be sourced from existing online resources?</p> <p>For support in using resources from the health intelligence networks contact your local HIN specialist via LKISWestMidlands@phe.gov.uk</p>	<p>Seek help from the NHS England analytical team: gareth.staton@nhs.net</p>	<p>Depending on the nature of the health intelligence support you are seeking, it may be appropriate that additional support is provided by PHE. This may include, for example, analysis of PHE held data or investigation of topics of particular relevance to public health. The NHS England analytical team can advise when seeking PHE analytical support would be appropriate.</p>

I am based in...	Search available online health intelligence resources	Seek local analytical support and advice	Seek additional or specialist analytical help
<p>..another health or healthcare organisation not listed above for example a provider trust, a voluntary sector organisation, or a commercial or private sector organisation.</p>	<p>Many online resources presenting health and health care data are open access and can be freely accessed by anyone from any organisation. This includes most of the resources listed in this guide.</p>	<p>Your own organisation may have in-house analytical expertise that could provide some local analytical support.</p>	<p>If your in-house analytical support cannot address your query or you do not have access to in house support, you will need to seek analytical support from an external organisation. Most external organisations are likely to charge for this service.</p>

Appendix D2 Guidance on how and where to seek support and advice on PHE public health training

The table below is designed to help users specifically seeking guidance on available public health training opportunities.

I am based in...	The training available is...	This training is aimed at...	The level of this course is...	I can find further information on training at...
A local authority	Foundation course in public health intelligence	...those working in and around public health data and visualisation of information who are seeking a basic introduction to key concepts in health intelligence.	Foundation/introduction level.	LKISWestMidlands@phe.gov.uk .
	Local authority specific foundation course	...those working in and around public health data and visualisation of information who are seeking a basic introduction to key concepts in health intelligence.	Foundation/introduction level.	Applicants are proposed by their DPH or head of public health intelligence who should then contact LKISWestMidlands@phe.gov.uk .
	Analyst course	...users of public health data, aimed at new analysts within local authorities.	Intermediate/advanced.	Applicants are proposed by their DPH or head of public health intelligence who should then contact LKISWestMidlands@phe.gov.uk .
	Tools and Resources User Forum	...users of PHE tools	Introduction and exploration of PHE tools presented by the developers and asset owner.	LKISWestMidlands@phe.gov.uk
	Knowledge and Intelligence Network	...the wider public health community	Themes and topics relevant to public health practice explored in a group setting.	LKISWestMidlands@phe.gov.uk

I am based in...	The training available is...	This training is aimed at...	The level of this course is...	I can find further information on training at...
	HES data training	...supporting new users of the HES ten-year extract download	Advanced.	LKISWestMidlands@phe.gov.uk
	Critical appraisal skills	...users who wish to learn skills which support their understanding of research literature.	Introduction.	Contact LKISWestMidlands@phe.gov.uk in the first instance.
	Train the trainer	...future foundation course and analyst course teachers who wish to be supported in their new role.	Introduction.	Applicants are proposed by their head of public health intelligence or PHE line manager who should then contact LKISWestMidlands@phe.gov.uk .
A CCG	Foundation course in public health intelligence	...those working in and around public health data and visualisation of information.	Foundation/introduction level.	LKISWestMidlands@phe.gov.uk
	Tools and Resources User Forum	...users of PHE tools	Introduction and exploration of PHE tools presented by the developers and asset owner.	LKISWestMidlands@phe.gov.uk
	Knowledge and Intelligence Network	...the wider public health community	Themes and topics relevant to public health practice explored in a group setting.	LKISWestMidlands@phe.gov.uk
	Critical appraisal skills	...users who wish to learn skills which support their understanding of research literature.	Introduction.	Contact LKISWestMidlands@phe.gov.uk in the first instance.
An NHS England organisation	Foundation course in public health intelligence	...those working in and around public health data and visualisation of information.	Foundation/introduction level.	LKISWestMidlands@phe.gov.uk

I am based in...	The training available is...	This training is aimed at...	The level of this course is...	I can find further information on training at...
(including PHE screening and immunisation teams)	Tools and Resources User Forum	...users of PHE tools.	Introduction and exploration of PHE tools presented by the developers and asset owner.	www.apho.org.uk/resource/view.a.spx?RID=175500#Events
	Knowledge and Intelligence Network	...the wider public health community.	Themes and topics relevant to public health practice explored in a group setting.	LKISWestMidlands@phe.gov.uk
	Critical appraisal skills	...users who wish to learn skills which support their understanding of research literature.	Introduction.	Contact LKISWestMidlands@phe.gov.uk in the first instance.
A PHE centre	Foundation course in public health intelligence	...those working in and around public health data and visualisation of information.	Foundation/introduction level.	LKISWestMidlands@phe.gov.uk
	Local authority specific foundation course	...those working in and around public health data and visualisation of information.	Foundation/introduction level.	Place based working local lead (see Appendix C3) or LKISWestMidlands@phe.gov.uk if you are interested in running this local option.
	Tools and Resources User Forum	...users of PHE tools.	Introduction and exploration of PHE tools presented by the national lead.	LKISWestMidlands@phe.gov.uk
	Knowledge and Intelligence Network	...the wider public health community.	Themes and topics relevant to public health practice explored in a group setting.	LKISWestMidlands@phe.gov.uk
	Learning and development theme-specific web-based learning 'L&D Club'	...PHE-specific learning relating to tools, organisational strategy, directorates roles and responsibility.	Introductory but theme specific.	This is currently not available in the West Midlands. For further information contact LKISWestMidlands@phe.gov.uk .

I am based in...	The training available is...	This training is aimed at...	The level of this course is...	I can find further information on training at...
	Analyst course	...users of public health data, aimed at new analysts within local authorities.	Intermediate/advanced.	Applicants are proposed by their DPH or Head of Public Health Intelligence who should then contact LKISWestMidlands@phe.gov.uk .
	Critical appraisal skills	...users who wish to learn skills which support their understanding of research literature.	Introduction.	Contact LKISWestMidlands@phe.gov.uk in the first instance.
	Train the trainer	...future foundation course and analyst course teachers who wish to be supported in their new role.	Introduction.	Applicants are proposed by their head of public health intelligence or PHE line manager who should then contact LKISWestMidlands@phe.gov.uk .
A PHE national team	Foundation course in public health intelligence	...those working in and around public health data and visualisation of information.	Foundation/introduction level.	LKISWestMidlands@phe.gov.uk .
	Analyst course	...users of public health data, aimed at new analysts within local authorities.	Intermediate/advanced.	Applicants are proposed by their DPH or head of public health intelligence who should then contact LKISWestMidlands@phe.gov.uk .
	Tools and Resources User Forum	...users of PHE tools	Introduction and exploration of PHE tools presented by the national lead.	LKISWestMidlands@phe.gov.uk .
	Knowledge and Intelligence Network	...the wider public health community	Themes and topics relevant to public health practice explored	LKISWestMidlands@phe.gov.uk .

I am based in...	The training available is...	This training is aimed at...	The level of this course is...	I can find further information on training at...
			in a group setting.	
	Critical appraisal skills	...users who wish to learn skills which support their understanding of research literature.	Introduction.	Contact LKISWestMidlands@phe.gov.uk in the first instance.
	Train the trainer	...future foundation course and analyst course teachers who wish to be supported in their new role.	Introduction.	Applicants are proposed by their head of public health intelligence or PHE line manager who should then contact LKISWestMidlands@phe.gov.uk .
Another NHS organisation	Foundation course in public health intelligence	...those working in and around public health data and visualisation of information.	Foundation/Introduction level.	LKISWestMidlands@phe.gov.uk .
	Tools and Resources User Forum	...users of PHE tools	Introduction and exploration of PHE tools presented by the developers and asset owner.	LKISWestMidlands@phe.gov.uk .
	Knowledge and Intelligence Network	...the wider public health community	Themes and topics relevant to public health practice explored in a group setting.	LKISWestMidlands@phe.gov.uk .
	Critical appraisal skills	...users who wish to learn skills which support their understanding of research literature.	Introduction.	Contact LKISWestMidlands@phe.gov.uk in the first instance.
A third sector organisation	Foundation course in public health intelligence	...those working in and around public health data and visualisation of information.	Foundation/introduction level.	LKISWestMidlands@phe.gov.uk .

I am based in...	The training available is...	This training is aimed at...	The level of this course is...	I can find further information on training at...
	Tools and Resources User Forum	...users of PHE tools.	Introduction and exploration of PHE tools presented by the developers and asset owner.	LKISWestMidlands@phe.gov.uk .
	Knowledge and Intelligence Network	...the wider public health community.	Themes and topics relevant to public health practice explored in a group setting.	LKISWestMidlands@phe.gov.uk .
	Critical appraisal skills	...users who wish to learn skills which support their understanding of research literature.	Introduction.	Contact LKISWestMidlands@phe.gov.uk in the first instance.
The private sector	PHE currently, do not offer training routinely to private organisations.			Companies who wish to explore training with PHE should contact K&I.WorkforceDev@phe.gov.uk

Appendix D3 Guidance on how and where to seek support and advice on public health evidence and PHE library services

Further information on how to access public health knowledge evidence is available from regionally based Public Health England knowledge and evidence specialists. For any further enquiries please contact Wendy Marsh, senior knowledge and evidence manager wendy.marsh@phe.gov.uk

Region	Regional specialist
East of England	mo.hussain@phe.gov.uk
East and West Midlands	patricia.lacey@phe.gov.uk
London and South East	wendy.marsh@phe.gov.uk
South West and Thames Valley	caroline.debrun@phe.gov.uk
Yorkshire and The Humber, North East and North West	helen.outhwaite@phe.gov.uk

PHE Centres can also provide advice and expertise on current policy and evidence on public health interventions. Please contact the West Midlands specialist for further details.

Feedback

All resources and web links in the document are current as of May 2016 and are due to be updated regularly. The document aims to be as up-to-date and accurate as possible; therefore, if you detect any errors or wish to suggest updates we would be grateful if you could contact your local LKIS team (see below). Similarly, if you have any feedback or recommendations on the document's content or scope, please send your comments to your local LKIS team.

Please send feedback to LKIS West Midlands LKISWestMidlands@phe.gov.uk

Glossary

BIBD	Blood infections in blood and tissue disorders
CAMHS	Child and adolescent mental health service
CAS	Cancer analysis system
CPA	Care programme approach
CCG	Clinical commissioning group
CI	Confidence interval
ChiMat	National Child and Maternal Health Intelligence Network
CJD	Creutzfeldt-Jakob disease
CKD	Chronic kidney disease
COPD	Chronic obstructive pulmonary disease
COSD	Cancer outcomes and services dataset
COVER	Cover of vaccination evaluated rapidly
CPES	National cancer patient experience survey
CQC	Care Quality Commission
CSU	Commissioning support units
CTAD	Chlamydia testing activity dataset
CVD	Cardiovascular disease
CYPMHW	Children and young people's mental health and wellbeing
DAA	Direct access audiology
DAMS	Drugs and alcohol monitoring system
DOVE	Diabetes outcome versus expenditure tool
DSA	Data sharing agreement
DSR	Directly standardised rate
EI	Early intervention
ELCQuA	End of life care quality assessment tool
ENCORE	English national cancer online registration environment
ESB	Extended-spectrum beta-lactamases
EWD	Excess winter deaths
FES	Field Epidemiology Service
FFT	Friends and family test
GOR	Government office region
GP	General practice/practitioner
GPPS	General practice patient survey
GRE	Glycopeptide-resistant enterococci
GUM	Genitourinary medicine
GUMCADv2	Genitourinary medicine clinical activity dataset version2
HANDD	HIV and AIDS new diagnoses database
HARS	HIV and AIDS reporting system
HCAI	Healthcare associated infections

HDIS	HES data interrogation system
HES	Hospital episode statistics
HIA	Health impact assessment
HIN	Health intelligence network
HIV	Human immunodeficiency virus
HPV	Human papillomavirus
HSCIC	Health and Social Care Information Centre
HTLV	Human T cell lymphotropic virus
IHVC	Indicative health visitor collection
Inhale	Interactive health atlas for lung conditions in England
JSNA	Joint strategic needs assessment
L2SARE	European regional health profiles
LA	Local authority
LAPE	Local alcohol profiles for England
LAT	Local area teams
LGV	Lymphogranuloma venereum
LKIS	Local Knowledge and Intelligence Service
LSOA	Lower super output area
MDT	Multidisciplinary team
MERS-CoV	Middle East respiratory syndrome coronavirus
MHDNIN	Mental Health Dementia and Neurology Intelligence Network
MSOA	Middle super output area
NCIN	National Cancer Intelligence Network (now part of NCRAS)
NCMP	National Child Measurement Programme
NCRAS	National Cancer Registration Analysis Service
NCRS	National Cancer Registration Service (now part of NCRAS)
NDTMS	National Drug Treatment Monitoring System
NeoLCIN	National End of Life Care Intelligence Network
NF	Necrotising fasciitis
NHS	National Health Service
NICE	National Institute for Health and Care Excellence
ODR	Office for Data Release
ONS	Office for National Statistics
PCT	Primary care trust
PHE	Public Health England
PHOF	Public health outcomes framework
PHOLIO	Public health
PLV	Panton-valentine leukocidin
PROMS	Patient reported outcome measures
QIPP	Quality, innovation, productivity and prevention
QOF	Quality and outcomes framework
RIS	Radiology information systems
ROI tool	Return on investment tool

RSV	Respiratory syncytial virus
RTDS	Radiotherapy dataset
RTT	Referral to treatment
SACT	Systematic anti-cancer dataset
SCN	NHS England Strategic Clinical Network
SHA	Strategic health authority
SHAPE	Strategic health assessment and planning evaluation
SOPHID	Survey of prevalent HIV infections diagnosed
SPOT	Spend and outcome tool
SSCRG	Site specific clinical reference group
SSI	Surgical site infection
STI	Sexually transmitted infection
TB	Tuberculosis
TBE	Tick-borne encephalitis
UA	Unitary authority
UDA	Unit of dental activity
UKCIS	United Kingdom Cancer Information Service
VPD	Vaccine preventable disease
VTE	Venous thromboembolism
VTEC	Vero cytotoxin-producing Escherichia coli