

Piano Programme

Maths GCSE

Family Learning

English GCSE

CHOICE

Coventry Adult Education Service
AUTUMN TERM 2024

British Sign Language & Makaton

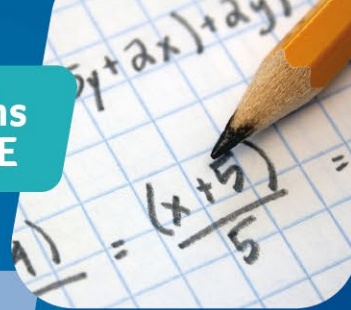
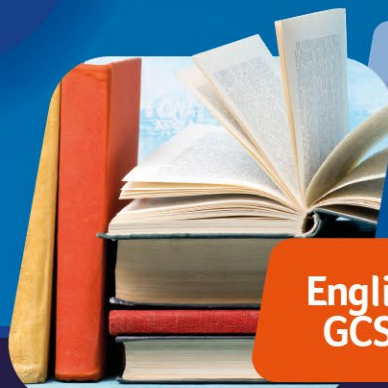
Childcare & Early Years

Visual Arts

Digital Functional Skills

Dance

www.coventry.gov.uk/adulted



COMING SOON!

The Adult Education Service is undergoing some exciting changes. We will still provide hundreds of paid and free courses taught by friendly, knowledgeable, and helpful tutors in more than 20 local venues or online. However, we are finding alternative ways to deliver some services.

We are dedicated to making sure that there is a well-rounded offer that gives residents the opportunity to benefit from a variety of learning outcomes and progression routes. To better enable this there will be changes to the organisation of the service, the curriculum offer, course costs and learner support arrangements based on feedback from service users. The service will be structured around three 'pillars' of engagement:

LEARNING FOR WORK:

This route is for adults whose primary focus is either getting work, changing their job, or gaining promotion.

LEARNING TO CONNECT:

This route is for residents who are seeking new outlets and want to give back to the community.

LEARNING FOR LIFE:

This route is for residents seeking help with personal development or support with their family life.

Key changes coming over the next year include:

- **Informal bite-sized learning:** because people have told us they would like one-off sessions, workshops, and short courses.
- **FREE bus tickets:** for some learners on qualification based courses, unemployed adults and those in work and earning less than £32,000 per annum, to access learning in one of our adult education centres or community venues.
- **FREE courses in English, maths, digital, and family learning:** because people have told us these essential skills help get into work, progress in work, or support child development.
- **New learning activities and courses** linked to Essential Skills, Language Skills, Work Skills and Life Skills.
- **System improvements:** because you have told us your personal information, learning and additional support needs should only be asked for once irrespective of how many courses/activities you enrol onto with us each year.
- **Leisure Programme:** competitively priced courses for pleasure. We will run a selection of leisure-focused courses, such as piano lessons, that no longer require as much tracking of progress and achievement. 1-2-1 piano lessons will also be available on demand.
- **New delivery venues:** including Coventry City Council's Job Shop (see page 16).

The Service is also changing the way it operates its childcare services to enable a wider range of support for more learners across the city. Currently we offer creche places to learners who are parents, on a first come, first served basis. Therefore, for some parents there are no facilities available, and the arrangements do not offer access across the city.

The service will be introducing an improved Learner Support Fund. This will enable learners to apply via a new process, to include funding to pay for childcare for children who are looked after by a childminder, provider, or childminder agency registered with Ofsted. This will enable support to access the Government's free places for early years provision scheme, with options closer to schools where siblings may already attend.

The Fund will also support transport costs, course trips, books, and equipment costs, as well as devices and connectivity for some residents, thereby offering a fairer scheme for people to access funding to reduce barriers to learning.

So, whether you want to gain a qualification to help get into work, develop new skills to help in the workplace, or learn for your enjoyment, health, and wellbeing, we still look forward to welcoming you and ensuring you get the best possible learning experience with us.

HOW TO ENROL

HOW TO ENROL ON A COMMUNITY PROGRAMME CLASS

You can enrol from 19 August 2024 by:

- Going online to www.coventry.gov.uk/adulted selecting 'Enrol Online for an Adult Education Course' and search for the course you would like to join.
- Calling **024 7697 5200** where a member of the Adult Education Service will enrol you onto a class. Payment can be made by debit or credit card only.
- There will be a Drop-In enrolment session on **Tuesday 3 September** for Community Programme courses at:

Cheylesmore Community Centre 10.00am-12.00pm

To avoid disappointment, we advise you enrol as early as possible.

COURSES THAT REQUIRE AN INTERVIEW

Courses requiring an interview/assessment are marked with an * throughout. You will be required to demonstrate skills to complete the qualification including written and verbal communication. Please see below for details on identity checks and fee exemptions. Details of how to enrol/book an assessment are in the following pages.

IMPORTANT - you must bring the following when you come to enrol for any of the courses marked with * below:

- **Identification that will let us check if you are eligible for the course.**
Any one of: passport, birth certificate, driving licence, residence card, asylum seeker ARC card.
For non-UK nationals, as well as ID you will also need to prove your residency status in the UK.
If you are an EEA national, you will need to have obtained settled or pre-settled status to be eligible as well.
In most cases you will need to have been resident in the UK, EEA or Gibraltar for the last 3 years to be eligible, however there are some exceptions to this rule, e.g. asylum seekers. If you are in any doubt about your eligibility, talk to us and we will check for you.
- **The appropriate fee for your course.**
- **Evidence of relevant benefits or income** – if your gross personal income is less than £32,000 per annum (this means that we can offer additional financial support in some cases).
- **Your national insurance number.**

Fees and fee exemptions:

Many of our courses that lead to a qualification are free for people on benefits or low incomes. We also have a learning support fund which can provide financial assistance in some cases.

If you are interested in studying with us but are not sure whether you can afford the fee advertised in this magazine, come along to an enrolment session or get in touch to discuss your situation.

Certain courses are free for some people regardless of income – for more details see the sections on individual courses or get in touch with us if you are not sure by ringing 024 7697 5200.

If fees are payable those over £100 can be paid in instalments by direct debit.

INTERVIEW AND ASSESSMENT DETAILS

FOR COURSES LISTED BELOW

BRITISH SIGN LANGUAGE & MAKATON

Are you interested in learning or improving your British Sign Language (BSL) skills?

We have 11-week introductory courses and 36-week Level 2 qualification courses available.



Please enrol online for one of our **Introduction to British Sign Language Level 1** courses:

Course Title	Venue	Date	Day/Time
Introduction to British Sign Language Level 1	Southfields Old School	26 Sep - 12 Dec	Thursday 7.00-9.00pm
Introduction to British Sign Language Level 1	Telfer Road	25 Sep - 11 Dec	Wednesday 10.00am-12.00pm

To enrol for the BSL Level 2 course, please call 024 7697 5200 to book an appointment for enrolment:

Course Title	Venue	Date	Day/Time
*British Sign Language Level 2	Southfields Old School	18 Sep - 11 Dec	Wednesday 6.30-9.00pm

We also have 3-week Basic Makaton courses running from November 2024. Today over 100,000 children and adults use Makaton symbols and signs to communicate. Please enrol online for one of our dynamic introductory Makaton courses to learn how.

*BUSINESS AND ADMINISTRATION, CUSTOMER SERVICE ASSESSMENTS

*Business and Administration courses require you to book an appointment before your course starts. The assessment venue may be different from the venue your chosen course is delivered in. Please go to www.coventry.gov.uk/adulted Click onto 'Pre-Course Assessments' to book your appointment.



Course Title	Venue	Date	Time
Business & Administration – The Basics	Adult Education Centre Telfer Road	10 Sep 17 Sep	9.30am-12.00pm
Business and Administration – The Next Steps	Bell Green Library	10 Sep 17 Sep	12.30-3.00pm
Certificate in Introduction to Customer Service Level 1	Adult Education Centre Telfer Road	11 Sep 18 Sep	12.30-3.00pm

*CHILDCARE AND EARLY YEARS

- * Entry 3 Caring for a Child
 - * Level 1 Award in Caring for Children
 - * Level 2 Diploma for The Early Years Practitioner
 - * Level 3 Diploma for the Early Years Educator
- Course is free if you do not hold a level 3 qualification (A Level or equivalent) or above, or you are earning less than the National Living Wage or are unemployed.*



*SUPPORTING TEACHING AND LEARNING IN SCHOOLS

- * Level 1 Preparing to Work in Schools
- * Level 2 Certificate in Supporting Teaching and Learning in Schools
- * Level 3 Certificate in Supporting Teaching and Learning in Schools
- * Level 3 Diploma in Specialist Support for Teaching and Learning in Schools

** Interviews will take place during September 2024, dates to be confirmed. Please call **024 7697 5200** to book an interview.

Access discounted fees on a wide range of non-accredited Community Learning courses with Go CV+

Save money on Community

Learning courses with Go CV+



You can sign up for Go CV+ if you meet one or more of the below criteria

- ✓ You are in receipt of one of the qualifying benefits listed
- ✓ You are a carer registered with Carers Trust Heart of England
- ✓ You are a Foster Carer registered with Coventry City Council
- ✓ You are a Student [NUS]

All cards look the same and your unique card number will recognise you as Go CV+ provided you have a validated Go CV account **BEFORE** you book and pay your course fees – refunds will not be possible.

Qualifying benefits:

- Attendance Allowance
- Asylum Seeker
- Bereavement Support Payment
- Carer's Allowance
- Council Tax support (not single person occupancy)
- Disability Living Allowance
- Employment and Support Allowance
- Housing Benefit
- Incapacity Benefit
- Income Support
- Industrial Injury Disablement Benefit
- Industrial Death Benefit
- Jobseeker's Allowance
- Pension Credit
- Personal Independence Payment
- Severe Disablement Allowance
- Universal Credit
- War Disability Pension/Armed Forces Compensation
- Working Tax Credit (not Child Tax Credit alone)



Apply now at www.go-cv.co.uk/adult-education

ENGLISH FUNCTIONAL SKILLS

READING, WRITING, SPEAKING AND LISTENING

If you speak English but need help improving your reading and writing these courses are for you, they will help you improve your skills and at the same time you will gain a nationally recognised qualification.

We run both daytime and evening classes at venues throughout the city, as well as online classes. Please note that even if you join an online course, we currently only offer face-to-face enrolments and exams are all paper-based, taken at one of our venues. Classes are 2½ hours a week over the school year.

FUNCTIONAL SKILLS ENGLISH CLASSES

These classes focus on the English skills adults need in their everyday lives, in the workplace, in the community and in your home. There are five different levels from Entry 1 to the highest L2, which is equivalent to grade C or grade 4 at

GCSE. Before you are enrolled onto an English course, you will receive advice & guidance and will be offered an initial assessment. This will help you make an informed choice about the best class for you.

If you want English Language GCSE, please see page 6.

SHORT ENGLISH COURSES



BRUSH UP YOUR ENGLISH

WHAT IS THIS COURSE ABOUT?

It is about giving you as the learner some underpinning skills and knowledge around using the correct techniques to write clearly, logically and for the appropriate audience. It will also help with spelling, punctuation and grammar.

WHAT WILL I LEARN?

The course is framed around the skills learners need in the world of work such as how to write letters, emails, articles and reports with the

underpinning skills being spelling, writing sentences differentiating when to use formal and informal language and using correct punctuation.

LENGTH OF THE COURSE:

Five weeks for 2 1/2 hours per week, every half term until April 2025.

WHAT WILL THIS COURSE LEAD TO?

- A Functional Skills Course
- Other Adult Education courses



ENGLISH FOR WORK

WHAT IS THIS COURSE ABOUT?

It is about giving you as the learner some underpinning skills and knowledge around using the correct techniques to write clearly, logically and for the appropriate audience. It will also help with spelling, punctuation and grammar.

WHAT WILL I LEARN?

The course is framed around the skills learners need in the world of

work such as how to write letters, emails, articles and reports you will be given advice and support around how to write CV's, how to complete job applications and how to write personal statements for jobs and you will gain skills around interview techniques.

LENGTH OF THE COURSE:

Five weeks @ two and a half hour, one every half term from 15 November 2024.

DYSLEXIA

Support for learners with specific learning difficulties is available. Please discuss this with staff at enrolment

VISUAL IMPAIRMENT

Specialist English Classes with access to assistive technology are available.

BRAILLE

LEARN OR IMPROVE YOUR BRAILLE SKILLS.

Classes are primarily for learners with visual impairment, but places may be available for other interested learners.



Note this course is held at the Job Shop



HOW TO ENROL

To enrol on a face to face or online class you must book an appointment at an enrolment session. Go to the Adult Education website and click on Pre-Course assessments at the bottom of the page where you will be able to choose a time and location that suits you. If you don't feel able to apply online please contact the Adult Education main office number which is 024 7697 5200 and speak to a member of the admin team.

To enrol on a course, you must bring proof of identity and proof of your residency status in the UK.

Further information about all English courses is available on Coventry Adult Education Coursefinder www.coventry.gov.uk/adult-education/course-finder

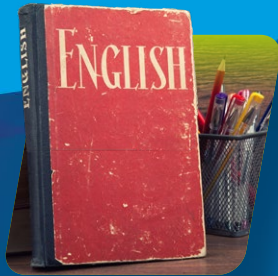
ADVICE AND GUIDANCE

For Advice and Guidance and/or more information about English classes, please contact Sarah Brookes on **024 7697 8729** or via email on sarah.brookes@coventry.gov.uk or essentialskills@coventry.gov.uk

Alternatively, you can phone the main office on **024 7697 5200**.

English classes will start the week beginning Monday 16 September. All classes will need viable numbers and after enrolments you may be asked to consider moving to a different day/time if your class doesn't have enough enrolments. Managers will aim to meet the needs of all learners.

GCSE ENGLISH & MATHS: AQA



We are planning to offer both face-to-face and online GCSE courses from September 2024. All classes will require you to make a commitment of attending each class and completing up to 5 hours home study per week.



GCSE ENGLISH includes developing your reading & writing skills and language analysis of 19th, 20th and 21st Century texts. It is a 32-week course with assessment through 2 exams, one in May and one in June. For more information, see below or contact Sarah Brookes.

GCSE MATHS includes number and algebra, geometry and measures, statistics and probability. Examination is through 3 papers taken in May and June. For more information see below or contact Matt Towner.

ENGLISH CLASS DAYS AND TIMES

English courses start week beginning 16 September.

Tue 12:30-3pm English GCSE Southfields Old School

Tue 6:00-8:30pm English GCSE Telfer Road Learning Centre

Tue 6:00-8:30pm English GCSE Online

Wed 9:15-11:45am English GCSE Coventry Community Resource Centre

There will also be an Online Intensive GCSE English course that will start two weeks before Christmas

MATHS CLASS DAYS AND TIMES

Maths courses start week beginning 16 September.

Tue 6:30-9pm Maths GCSE Online

Wed 9:15-11:45am Maths GCSE Stoke Aldermoor Community Centre

Thu 9:15-11:45am Maths GCSE Online

Thu 6:00-8:30pm Maths GCSE Coventry Community Resource Centre

Sat 9:30-12:00am Maths GCSE Coventry Central Library

How do I enrol?

Prospective GCSE learners should have a minimum of GCSE grade D/3 or Functional Skills level 1 and **must pass a pre-course assessment** before starting the course. If you have been away from education for a while or have no qualifications but are confident in your everyday skills, please talk to us. **Passing the pre-course assessment is the criteria for being offered a place on a course.** We strongly advise that you take **ONE GCSE in an academic year.** However, if you are uncertain which GCSE to apply for, or you have exceptional circumstances, you are welcome to sit both assessments to enable you to make an informed decision.

1 Phone the Adult Education office on **024 7697 5200** to speak with admin support who will register your intention to join a class and book you into an enrolment session. Or go to the Adult Education website and click on Pre-Course assessments at the bottom of the page where you will be able to choose a time and location that suits you.

OR **2** ENGLISH enquiries to Sarah Brookes on **024 7697 8729** or **sarah.brookes@coventry.gov.uk** from 2 September.

OR **3** MATHS enquiries to Matt Towner on **024 7697 1093** or **matt.towner@coventry.gov.uk** from 2 September.

Attend a Maths & English advice & guidance and assessment session. Please allow 2 hours for taking each assessment. Please do not bring children. Please bring **photo ID** and **evidence of residency status** (e.g. UK passport, current valid residence permit, valid share code from GOV.uk) with you so we can check if you are eligible for the course. Please also bring any evidence of existing English or maths qualifications if you have them.

Do I need to pay fees?

If you do not have a GCSE in the subject you are applying for at grade 9 – 4 (A* – C), the course is FREE.

If you do have a GCSE grade 4 (C) or above, and need a higher grade for a specific reason, **please talk to Sarah or Matt as it may be possible to apply for funding.** If you do not qualify for the support fund the fees are:

Course: £864 (includes £50 exam fees)



FURTHER INFORMATION:

If you are offered a place on the course, you will be required to purchase a textbook. We also strongly recommend having access to a PC, laptop or tablet at home for online study. Details of this will be available at pre-course assessment.

*MATHS FUNCTIONAL SKILLS

Our courses help you improve your maths and enable you to gain nationally recognised qualifications. The classes are for people who feel they want to start from the basics right up to those preparing for Maths GCSE.



We run both daytime and evening classes at venues throughout the city, as well as online classes. Please note that even if you join an online course, we currently only offer face-to-face enrolments and exams are all paper-based, taken at one of our venues. Classes are 2½ hours a week over the school year, aiming at taking exams in the summer term. If you need an exam before this, please speak to someone at enrolment.

FUNCTIONAL SKILLS MATHS study enables you to achieve a nationally recognised qualification, will improve your maths skills and increase your confidence to use these skills in everyday situations. This includes at work,

helping your children/grandchildren with their maths, gaining entry to further/higher education and coping in a modern world where maths skills are essential.

FUNCTIONAL SKILLS MATHS qualifications are at 5 different levels from Entry Level 1 (E1) up to Level 2 (L2). You will work towards the most appropriate level, depending on your ability in maths when you start. Before you are enrolled onto a maths course, you will receive advice & guidance and will be offered an initial assessment. This will help you make an informed choice about the best class for you.

The classes focus on the kind of maths adults need in their everyday lives and include solving calculations, problem solving, using fractions, decimals and percentages, understanding the metric system and interpreting graphs and charts.

SHORT MATHS BRUSH-UP CLASSES

If you are thinking about improving your maths but the thought of joining a maths class worries you, we can help! We are running short five-week courses aimed at improving maths

confidence. This may lead to joining a Functional Skills class later in the year but it could just be about building up your skills in a non-pressured environment. You will learn about how to work with everyday maths, from the weekly shop to planning that DIY project you've been putting off!

To book a place at an enrolment session, call Adult Education on 024 7697 5200 or go to the Adult Education website and click on Pre-Course assessments at the bottom of the page where you will be able to choose a time and location that suits you.

Maths classes will start the week beginning Monday 16 September. All classes will need viable numbers and after enrolments you may be asked to consider moving to a different day/time if your class doesn't have enough enrolments. Managers will aim to meet the needs of all learners.

For more information about maths classes, please contact Matt Towner at matt.towner@coventry.gov.uk or **024 7697 1093**. Alternatively, you can email mathsclasses@coventry.gov.uk or essentialskills@coventry.gov.uk or phone the main office on **024 7697 5200**.



MULTIPLY PROGRAMME

WANT TO IMPROVE
YOUR MATHS?

Is numeracy holding back
your career?
Do numbers make you
feel anxious?

Our Multiply programme offers Free* support from an expert tutor to help you improve your maths and numeracy skills.

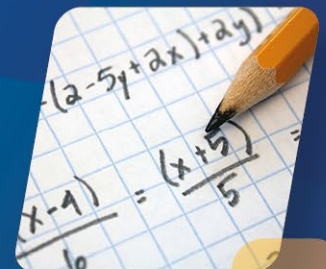
There is a range of different courses on offer, and our tutors will guide you every step of the way. Learn at a pace and time that is convenient to you with classroom-based, online, and short course options available.

Enhance your everyday life and increase your employability with improved maths and numeracy skills.

Take the first step and contact us today:

Multiply enquiries multiply@coventry.gov.uk or the Adult Education office on **024 7697 5200**

*Eligibility criteria may apply



*ESOL

(ENGLISH FOR SPEAKERS OF OTHER LANGUAGES)



Are you looking for an ESOL class?

We have classes at all levels from Beginner/Pre-Entry level to Advanced/Level 1. ESOL classes focus on speaking and listening, reading and writing at your level. You can learn about things which help you with everyday life.

We have face-to-face classes in different venues around the city and online options for higher level learners. Classes are in the morning, afternoon or evening.

What will you learn in your ESOL class?

You will practise speaking and listening, reading and writing at your level. You can learn about things which help you with everyday life such as finding a job, speaking at work, your home and community, health, travel, and living in Britain. You will work towards a City & Guilds qualification at Entry Level or at Level 1.

Can you study other subjects for ESOL learners?

You can also join classes for ESOL learners to study other subjects such as:

- ESOL for Cleaning
 - ESOL for Cooking & Food Hygiene
 - ESOL for Driving
 - ESOL & ICT (Computers)
 - Maths for ESOL Learners
 - Volunteering for ESOL Learners
- please contact*
Elisabeth.Campbell@coventry.gov.uk

How can you join an ESOL class?

You will need to meet the West Midlands Combined Authority eligibility criteria to enrol on this course so we will need to check your passport/residence/immigration status share code and payslips/benefit information at an enrolment session. You may need to have lived in the EU/UK for 3 years to join the class. If you are seeking asylum, you need to have lived in the UK for 6 months or have refugee status. If you are not sure if you meet the eligibility requirements, please book an

appointment and we will be happy to check your documents and advise you accordingly. You will also have an assessment when you enrol to check your starting level of English.

For more information or to book an appointment for a September 2024 ESOL enrolment and assessment session, please call 024 7697 5200. If all the appointments are full, we will ask you to ring back to book onto our October 2024 enrolment sessions.

Do you have an interest in working with different language groups?

Do you want to help others to be understood in English?

Do you want to learn about the role of a Community Interpreter?

We have **Level 1** and **Level 2 COMMUNITY INTERPRETING COURSES** for you. Please phone **024 7697 5200** to book an appointment for enrolment.

JOB SHOP

PROVIDING YOU WITH END-TO-END EMPLOYMENT SUPPORT

Looking for your first job, apprenticeship, to get back to work after redundancy, a career change, or long term unemployed... There's help and advice for all.

- Employability workshops
- 1-2-1 appointments with Job Coach - virtually and face to face
- Money advice including debt & benefit support
- CV, application and interview skills support
- Back to work and in work support
- Direct access to employer vacancies

 @Covjobsupport
 @Coventryjobshop
 @Coventryjobshop



CONTACT DETAILS:

West Orchards Shopping Centre,
West Orchards Way CV1 1QX
jobshop@coventry.gov.uk
024 7678 5740



For more information:
www.coventry.gov.uk/employment-support/job-shop-vacancies

SHORT DIGITAL SKILLS COURSES

To enrol onto one of these courses please go to the Adult Education website: www.coventry.gov.uk/adulted and click on Enrol on an Adult Education Course or call **024 7697 5200**.

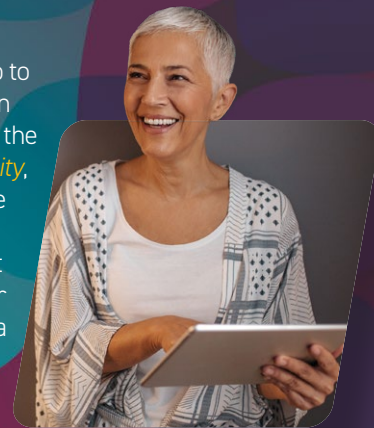


DIGITAL FUNCTIONAL SKILLS ENTRY 3 & LEVEL 1

To book a place at an enrolment session, call the Adult Education office on **024 7697 5200** to speak with admin support who will register your intention to join a class and book you onto an enrolment session. Or go to the Adult Education website and click on Pre-Course assessments and select Digital Functional Skills Qualification where you will be able to choose a time and location that suits you.

When you attend the enrolment session you must bring with you photo ID and proof of your residency status in the UK.

For Digital Courses in the Community go to the Adult Education website and click on *Pre-Course assessments* at the bottom of the page, select *Digital Skills in the Community*, where you will be able to choose a time and location that suits you. If you don't feel able to apply online please contact the Adult Education main office number which is **024 7697 5200** and speak to a member of the admin team.



NON-ACCREDITED:

GET TO KNOW YOUR MOBILE

3 Week Course x 2 hours

DOWNLOADING APPS

1 Week Course x 2 hours

DO IT ONLINE

3 Week course x 2 hours

UNDERSTANDING CLOUD STORAGE

2 Week course x 2 hours

WHAT ARE COMPARISON WEBSITES?

2 Week Course x 2 hours

CREATE YOUR CV

2 Week Course x 2 hours

DATABASE BASICS

5 Week Course x 2 hours

INTRODUCING AI (ARTIFICIAL INTELLIGENCE)

2 Week Course x 2 hours

EXPLORE EBAY / VINTED / FACEBOOK MARKETPLACE

3 Week Course x 2 hours

ACCREDITED:

This qualification is aimed at individuals who wish to gain IT skills for life and skills for work, perhaps building their IT skills if in employment or if starting out in employment.

ENTRY LEVEL 3 QUALIFICATION

This qualification provides a solid foundation in Information Technology, essential for early-stage employment or training roles that require IT skills. By completing this course, you will acquire the knowledge and the skills necessary to improve your confidence and to prepare you for more advanced tasks in your professional or learning journey.

LEVEL 1 QUALIFICATION

This qualification is aimed at adults with some experience of using Digital Devices and the Internet who wish to strengthen their Information Technology skills; it also provides an opportunity for learners to utilise Information Technology to support progression in a range of vocational sectors.

The Qualification at both levels cover the following units:

Using devices and handling Information

Manage and store information and identify and solve simple technical issues.

Creating and Editing

Creating and editing documents, images and other types of digital media.

Communicating

Gain an understanding of electronic

communications. Learning to use email and make video calls.

Transacting

Learn how to complete and submit a form, comply with verification checks and purchase a service or item online.

Being Safe and Responsible Online

Gain an understanding of the importance of privacy, data protection and backing up data. How use email and make video calls.

Phone the Adult Education office on **024 7697 5200** to speak with admin support who will register your intention to join a class and book you into an enrolment session.

OR
Digital Skills enquiries call **024 7697 1796** or email aesict@coventry.gov.uk from 2 September.

FAMILY LEARNING

Family Learning sessions promote strong positive relationships within families; enabling parents and carers to support their children's learning and development.



FREE COURSES

Delivered at many venues around the city, these courses last for 1 to 2 hours per week, for between 5 and 10 weeks. Our sessions are all free to Coventry residents, and include:

MATHS AND ENGLISH IN THE PRIMARY SCHOOL – helping parents to understand how these subjects are taught in modern British primary schools and providing free resources to support children's learning at home. Parents attend without their children.

POSITIVE FAMILY FOUNDATIONS – a nurture-based programme that encourages all parents to understand and support their children's development and behaviour in a practical way. There are two versions – one for parents with children aged 0-10 years old, and one for parents with children aged 11 plus. Parents attend without their children.

'50 THINGS TO DO BEFORE YOU'RE 5' – stay and play sessions for parents and their pre-school aged children. These sessions offer a range of fun and affordable ideas and activities inspired by the free '50 things before you're 5' app coventry.50thingstodo.org/app/os#!/welcome

BABY MASSAGE – these classes will teach massage techniques to use with your baby (from 6 weeks to crawling) to help them to relax and sleep soundly. The techniques will help ease colic pain, stimulate brain development, and strengthen attachment between you and your baby.

For more information, please contact: Kate Steventon **024 7697 8730** – kate.steventon@coventry.gov.uk

*PIANO PROGRAMME

Piano classes are offered to adults (19 or over on 31/8/24) at all levels of playing from beginner to graded lessons, at Southfields Old School, at various times of the week.

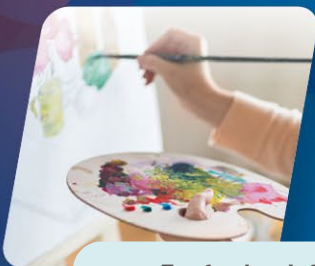
There is currently a waiting list. If you are interested in joining a class, placement is dependent upon your level of playing, and availability of a space in the class. We are also now offering 1:1 piano tuition classes.



For further information, please contact Elaine Rees on **024 7697 2521**, or email elaine.rees@coventry.gov.uk with details of your playing experience.

VISUAL ARTS

We offer a wide range of art and craft courses to help you improve your confidence and wellbeing, develop your skills, or help turn your creative passions into a business or profession!



For further information contact Beth Storie on **024 7697 8638** or email beth.storie@coventry.gov.uk

DANCE



Coventry Adult Education offers a range of Dance classes including Ballet, Ballroom & Latin, Bollywood, Flamenco, Line Dancing, Lyrical Contemporary and Modern Jazz! We believe it is never too late to learn to dance, so why not try something new this Autumn term?

For further information contact the Dance manager: Beth Storie on **024 7697 8638** or email: beth.storie@coventry.gov.uk

STUDY PROGRAMME

The Study Programme is an umbrella provision that consists of three programmes:

**STEP INTO YOUR FUTURE
THE SUPPORTED INTERNSHIP PROGRAMME.
STEP INTO THE WORLD OF WORK**

If you are 16 – 18 with or without an Educational Health Care plan or 19 – 24 with an Educational Health Care Plan? Then why not join one of our programmes ?

You will study arrange of qualifications and attend a work placement

QUALIFICATIONS INCLUDE THE FOLLOWING

- GCSE or Functional Skills Maths
- GCSE or Functional Skills English
- ICT Functional Skills
- Customer Service
- Employability

You will get progression support into employment, Apprenticeships, Supported Internships, Further Education or University.

Bursary payments may be available for those who join to help with travel costs and stationary expenses, dependant on eligibility.

If you are interested in any of the above courses please call Dawn or Tammy on the following number **07976 249918** or email Tammy on: **Tammy.sheldon@coventry.gov.uk**



Apprenticeships

Do you want the opportunity to work for an employer, earn an apprenticeship salary and gain a recognised qualification whilst gaining valuable workplace skills and experience?

Adult Education currently offer apprenticeship training from Level 2 to Level 5 in a range of areas including Customer Service, Business Administration, School Business Professional, Early Years, Learning and Skills, Team Leading, Leadership and Management, Teaching Assistant and Teaching Assistant with a PE focus.

Many of these apprenticeships are with Coventry City Council.

To find out what apprenticeship vacancies Coventry City Council currently have visit: www.coventry.gov.uk/apprenticeships and click on Apprenticeships in the Job Type tab. Applications are made online.

Whilst undertaking an apprenticeship you will also be required to develop your existing skills in maths and English, if you do not already have those qualifications, at the appropriate level. Apprenticeships can be for people of any age and must last at least 12 months.

If you are an employer who is considering employing an apprentice in one of the subject areas listed above, email us on: aesworkbasedlearning@coventry.gov.uk we are here to help and support your training needs.

If you want to undertake an apprenticeship outside of the Council in one of the subject areas stated above and would like more information email us on: aesworkbasedlearning@coventry.gov.uk

If you wish to discuss apprenticeship training in more detail please contact:

BUSINESS ADMIN & CUSTOMER SERVICE APPRENTICESHIPS

– Sarah Moss email Sarah.Moss@coventry.gov.uk

LEADERSHIP AND MANAGEMENT APPRENTICESHIPS

– Ben Roughton email Ben.Roughton@Coventry.gov.uk

EARLY YEARS AND TEACHING ASSISTANT APPRENTICESHIPS

– Sarah Moss email Sarah.Moss@coventry.gov.uk

APPRENTICESHIPS AT COVENTRY CITY COUNCIL

As an Apprentice at Coventry City Council, you will gain new knowledge, experiences and qualifications, all whilst earning a salary.

We see the value in apprenticeships as a foundation of a great career and offer a range of opportunities and career pathways including:

Business Administration, Civil Engineering, Customer Service, Early Years, Electrical, Finance, Highways, Horticulture, Legal, Plumbing, PE/School Sports, Teaching Assistant, Vehicle Mechanic and we're adding more all the time.

Apprenticeships at Coventry City Council offer you the chance to start a career and reach your potential in a supportive and structured environment.

You will be joining us during an exciting time and your apprenticeship will contribute to making life better for the people who live and work in Coventry.

For further information and to read about what our apprentices have to say about their experiences, visit our website:

www.coventry.gov.uk/apprenticeships check our Instagram page @apprentices_ccc or email apprenticeships@coventry.gov.uk



Apprenticeships

LEARN GROW ACHIEVE

What does your apprenticeship involve on a day-to-day basis?

Within my role as a Workforce Diversity and Inclusion Apprentice my days consists of lots of research and self-study regarding topics about underrepresented groups in the Council and wider organisations, consulting with the Employee Networks and completing tasks for my manager for upcoming training events. Our focus is for our communities in Coventry to be replicated and mirrored in the Councils Workforce. But all the work is so varied, and a new idea or focus can be different every day. On a Friday afternoon and half a day on a Wednesday I focus on my apprenticeship study. This can include reading articles related to my HR level three qualification, creating short podcasts, and keeping up to date with my Off the Job Hours.

What do you find most interesting about your apprenticeship?

The feeling of earning while you learn almost feels like something you shouldn't be doing; it feels like you are getting a bargain 😊. I love doing my apprenticeship tasks and feel lucky to be learning more about the topic and subject areas that I want to pursue in the future. I came from a Musical Theatre background from an early age, so moving into a new world of HR feels so different. However, it makes you realise the value of your personal and transferable skills no matter what your previous education.

How is your apprenticeship helping you with your career goals?

My eventual career goals would be to focus more on the Employee Relations side of HR. Both my Manager and Apprenticeship Tutor have been so supportive in allowing me to shadow people and gain more knowledge as well as supporting with educational materials. My level three is a stepping stone to wider potential and helps me propel forward into a career that I will enjoy. However, the Apprenticeships are not rigid, they allow people to flex and change their minds about what avenue they would like to take, and this really helps with finding the best fit for you and the Council.



Charlotte Ball

Diversity and Inclusion Apprentice



Apprenticeships at Coventry City Council

LANGUAGES

Unlock a World of Opportunities with our Language Courses!

WHY LEARN ANOTHER LANGUAGE?

Learning a new language can be a very rewarding experience. You'll open doors to personal and professional opportunities, meet new people, gain the confidence to travel to exciting places all over the world, learn new things about yourself and improve your job prospects.

Expand your horizons and embrace differences!

Unlock the door to a new language and culture. Learning a new language offers you a deeper understanding of different cultures and traditions. Travel with confidence and connect with locals on a more meaningful level, understand others and see the world with different eyes.

Boost your career prospects

In today's globalized world, being bilingual or multilingual can significantly enhance your employability. Stand out in the job market. Speaking a second language can increase your salary expectations, and open up career opportunities.



Improve your health and enhance your cognitive abilities

Learning another language boosts brain-power, problem-solving, critical-thinking, memory and listening skills. It's a great way to keep your mind sharp and agile at any age.

Build new relationships

Join a community of like-minded individuals who share your passion for learning. Make new friends, network with fellow learners, and practice your new language in a supportive environment.

Personal Fulfillment

Achieve a sense of accomplishment and boost your self-confidence as you learn a new language. It's a rewarding and enriching experience that adds a new dimension to your life.

Learn Arabic, French, German or Spanish from one of our experienced, native-speaking instructors who are passionate about teaching. Start your language learning journey today! Enrol for one of our language courses online now.

STEP INTO MANAGEMENT

Our CMI Team Leader and Management qualifications provide a progressive framework that enables you to develop and broaden your management skills.

We offer qualifications from Level 2, for aspiring managers and can offer a package of learning that suits your needs.

Whether you are just starting out in your career or want to get accredited, we have a course that is right for you!



Contact Ben Roughton via email Ben.Roughton@Coventry.gov.uk to discuss further

STEP INTO EMPLOYMENT

Are you looking for work? Here is an ideal opportunity!

- Are you over the age of 19?
- Unemployed and in receipt of benefit?
- Unemployed, looking for work and available to start work?

We have a range of courses that will help support you in your chosen career:

Becoming a Childminder
How to Start your own Business
Working in the Care Industry
Working as a Cleaner

Working in Customer Service
Working as an Early Years Practitioner
Working in the Hotel Industry

Working in Retail
Working in a School
Working in Security
Working in a Warehouse



On completion you will receive a **guaranteed job interview** with local employers that have vacancies.

INTERESTED? Contact Coventry Adult Education Services on aesworkbasedlearning@coventry.gov.uk or call **07809 103604**

COURSES FOR PEOPLE WITH LEARNING DISABILITIES/DIFFICULTIES

Do you have or know someone with a learning disability/difficulty?

If yes, we may have a course to suit.

If you would like more information, please contact Lynda Powell via email lynda.powell@coventry.gov.uk or call **024 7697 2515**.



ACCREDITED PAINTING & MIXED MEDIA & FABRIC CRAFTS

Would you like recognition for your artwork?

This term we are delighted to announce more accredited Art and Craft courses!

This is a short intensive course for 10 weeks where you will be working in a range of mediums in preparation for a final piece in either Painting & Mixed Media (NCFE Entry Level Award in Creative Craft Entry L1 or Entry L2), or Fabric Crafts (NCFE Entry Level Award in Creative Craft Entry 1).

Once we have received your application, the Visual Arts team will contact you to complete the enrolment process, as well as giving advice and guidance, this will also include a small assessment.

For further information contact Beth Storie - beth.storie@coventry.gov.uk



COURSE LISTINGS

BY VENUE



The Coventry Adult Education Service has hundreds of exciting courses at more than 20 venues across the city. To find the detailed information about each course go to our website www.coventry.gov.uk/adulted

● **Aspire Family Hub (FL)** Humber Avenue, Coventry, CV1 2SF

Office hours: Mon-Thu 8.30am-4.30pm

Course enquiries: **024 7697 8730**

Course Title	Course Code	Day	Times	Start	Finish	Weeks	Standard Fee Rate	Over 66s Fee Rate	Go CV Plus Rate	Enrolment Code
50 Things to do before you're 5 - Stay and play at Aspire	FL24501	Tue	1.00-3.00	17/09/24	03/12/24	11	FREE	FREE	FREE	CP

● **Bell Green Library & Learning Centre (BGL)** 17/23 Riley Square, Coventry, CV2 1LS

Office hours: Mon, Tue, Thu & Fri 9.00am-1.30pm

Course enquiries: **024 7697 2534**

Course Title	Course Code	Day	Times	Start	Finish	Weeks	Standard Fee Rate	Over 66s Fee Rate	Go CV Plus Rate	Enrolment Code
Do It Online	BGL24502A	Tue	1.00-3.00	24/09/24	08/10/24	3	FREE	FREE	FREE	CP
Downloading Apps	BGL24506A	Tue	1.00-3.00	10/12/24	10/12/24	1	FREE	FREE	FREE	CP
Get to Know your Mobile Phone	BGL24505A	Tue	1.00-3.00	19/11/24	03/12/24	3	FREE	FREE	FREE	CP
Introducing AI	BGL24504A	Tue	1.00-3.00	05/11/24	12/11/24	2	FREE	FREE	FREE	CP
Understand Cloud Storage	BGL24503A	Tue	1.00-3.00	15/10/24	22/10/24	2	FREE	FREE	FREE	CP
Course Title	Course Code	Day	Times	Start	Finish	Weeks	Course Fee	Exam Fee inc Reg.		Enrolment Code
*Business & Administration - The next steps	BGL24006	Tue	1.00-3.00	24/09/24	10/12/24	11	FREE	FREE		BA
*Digital Functional Skills Entry Level	BGL24008	Tue	9.30-12.00	05/11/24	30/01/25	10	FREE	FREE		DS

● **Broad Street Centre (BSC)** 161 Broad Street, Coventry, CV6 5BN

Office hours: Mon-Fri 9.00am-3.30pm (no on site parking)

Course enquiries: **024 7697 5502**

Course Title	Course Code	Day	Times	Start	Finish	Weeks	Standard Fee Rate	Over 66s Fee Rate	Go CV Plus Rate	Enrolment Code
Brush Up Your English Skills	BSC24509A	Wed	9.15-11.45	18/09/24	16/10/24	5	FREE	FREE	FREE	CP
Positive Family Foundations at Broad Street	FL24502	Tue	9.30-11.30	17/09/24	03/12/24	11	FREE	FREE	FREE	CP
Level 1 Study Skills for Community Interpreting	BSC24504A	Mon	9.30-11.30	11/11/24	09/12/24	5	FREE	FREE	FREE	CI
Course Title	Course Code	Day	Times	Start	Finish	Weeks	Course Fee	Exam Fee inc Reg.		Enrolment Code
*Ascentis Level 2 Certificate in Preparing for the Community Interpreting Role	BSC24030	Tue	9.30-12.00	24/09/24	22/10/24	5	£406.00	N/A		CI
*Creative Craft (Entry 1) Painting and Mixed Media	BSC24016	Thu	1.00-3.00	26/09/24	05/12/24	10	£72.00	N/A		A
*Level 1 Award in an Introduction into Early Years Settings	BSC24018	Wed	9.30-11.30	09/10/24	18/12/24	10	£140.00	N/A		CC
*Level 1 Award in Preparing to Work in Schools	BSC24028	Mon	12.30-2.30	30/09/24	09/12/24	10	£197.50	N/A		PW

● **Cheylesmore Community Centre (CCC)** 111 Arundel Road, Coventry, CV3 5JL

Office hours: Mon-Fri 8.30am-4.30pm

Course enquiries: **024 7697 5200**

Course Title	Course Code	Day	Times	Start	Finish	Weeks	Standard Fee Rate	Over 66s Fee Rate	Go CV Plus Rate	Enrolment Code
Art - The Art of Nature	CCC24501A	Tue	10.00-12.00	24/09/24	26/11/24	9	£78.60	£59.70	£17.70	CP
Art - Beginners Oils & Acrylics	CCC24506A	Wed	10.00-12.00	06/11/24	11/12/24	6	£53.40	£40.80	£12.30	CP
Art - Intermediate Watercolours & Mixed Media	CCC24508A	Fri	10.00-12.00	27/09/24	13/12/24	11	£95.40	£72.30	£21.30	CP
Art - Introduction to Pen, Ink & Watercolours	CCC24503A	Tue	1.00-3.00	24/09/24	22/10/24	5	£45.00	£34.50	£11.50	CP
Art - Natural Wonders in Watercolour	CCC24507A	Wed	1.00-3.00	25/09/24	11/12/24	11	£95.40	£72.30	£21.30	CP
Art - Watercolour with Words & Poetry	CCC24505A	Wed	10.00-12.00	25/09/24	23/10/24	5	£45.00	£34.50	£11.50	CP
Art - Wildlife in Watercolours & Mixed Media	CCC24504A	Tue	1.00-3.00	05/11/24	10/12/24	6	£53.40	£40.80	£12.30	CP
Bollywood Dance	CCC24515A	Fri	1.15-2.15	27/09/24	13/12/24	11	£46.20	£34.65	£10.00	CP
Brush Up Your English Skills	CCC24509A	Thu	12.30-3.00	19/09/24	17/10/24	5	FREE	FREE	FREE	CP
Craft - Quick & Easy Jewellery Making	CCC24502A	Tue	10.00-12.00	03/12/24	17/12/24	2	£19.80	£15.60	£10.00	CP
Dance Fusion	CCC24510A	Tue	12.00-1.00	24/09/24	10/12/24	11	£46.20	£34.65	£10.00	CP
Dance Musical Theatre	CCC24514A	Fri	12.00-1.00	27/09/24	13/12/24	11	£46.20	£34.65	£10.00	CP
Database Basics	CCC24517A	Tue	10.00-12.00	24/09/24	22/10/24	5	FREE	FREE	FREE	CP
Downloading Apps	CCC24519A	Tue	10.00-12.00	26/11/24	26/11/24	1	FREE	FREE	FREE	CP
Get to Know your Mobile Phone	CCC24518A	Tue	10.00-12.00	05/11/24	19/11/24	3	FREE	FREE	FREE	CP

Early Coventry History	CCC24521A	Thu	2.00-4.00	26/09/24	12/12/24	11	£92.40	£69.30	£19.80	CP
Excel at Maths: Maths through Spreadsheets	MULT24009	Wed	2.00-4.30	25/09/24	23/10/24	5	FREE	FREE	FREE	MUL
Line Dancing Beginners Plus	CCC24511A	Tue	1.15-2.15	24/09/24	10/12/24	11	£46.20	£34.65	£10.00	CP
Lyrical Contemporary Dance Beginners Plus	CCC24513A	Fri	10.45-11.45	27/09/24	13/12/24	11	£46.20	£34.65	£10.00	CP
Tap Dancing Improvers	CCC24512A	Fri	9.30-10.30	27/09/24	13/12/24	11	£46.20	£34.65	£10.00	CP
What are comparison Websites?	CCC24520A	Tue	10.00-12.00	03/12/24	10/12/24	2	FREE	FREE	FREE	CP
Numeracy for the Maths anxious	MULT24010	Wed	2.00-4.30	06/11/24	11/12/24	6	FREE	FREE	FREE	MUL
Course Title	Course Code	Day	Times	Start	Finish	Weeks	Course Fee	Exam Fee inc Reg.		Enrolment Code
*Braille	CCC24002	Mon	9.15-11.45	16/09/24	07/07/25	34	FREE	FREE		E
*Braille	CCC24005	Mon	12.30-3.00	16/09/24	07/07/25		FREE	FREE		E
*Creative Craft (Entry 2) Painting & Mixed Media	CCC24006	Fri	1.00-3.00	27/09/24	06/12/24	10	£72.00	N/A		A
*Digital Skills for Improvers	CCC24008	Tue	1.00-3.00	24/09/24	10/12/24	11	FREE	FREE		DS
*Excel Spreadsheets for Work (Beginners)	CCC24009	Wed	10.00-12.00	25/09/24	23/10/24	5	FREE	FREE	FREE	DS
*Word Processing for Work (Beginners)	CCC24010	Wed	10.00-12.00	06/11/24	11/12/24	6	FREE	FREE	FREE	DS

☀ Coffee Tots (FL) The Wave, New Union Street, Coventry, CV1 2PS The Wave, New Union Street, Coventry, CV1 2PS

Office hours: Mon-Thu 8.30am-4.30pm

Course enquiries: **024 7697 8730**

Course Title	Course Code	Day	Times	Start	Finish	Weeks	Standard Fee Rate	Over 66s Fee Rate	Go CV Plus Rate	Enrolment Code
Positive Family Foundations at Coffee Tots	FL24503	Wed	12.30-2.30	18/09/24	04/12/24	11	FREE	FREE	FREE	CP

☀ Coventry Central Hall (CCH) Warwick Lane, Coventry, CV1 2HA

Office hours: Mon-Fri 9.00am-1.00pm

Course enquiries: **024 7697 6766**

Course Title	Course Code	Day	Times	Start	Finish	Weeks	Standard Fee Rate	Over 66s Fee Rate	Go CV Plus Rate	Enrolment Code
Contemporary Dance Beginners	CH24505A	Sat	10.00-11.00	16/11/24	16/11/24	1	£7.00	£6.00	£5.00	CP
Dance for Parkinsons	CH24503A	Sat	10.00-12.00	12/10/24	12/10/24	1	£8.40	£6.30	£5.00	CP
Lyrical Contemporary Dance Beginners	CH24504A	Sat	10.00-11.00	26/10/24	26/10/24	1	£7.00	£6.00	£5.00	CP

☀ Coventry Community Resource Centre (CCRC) Red Lane, Coventry, CV6 5EE

Office hours: Mon-Thu 9.00am-3.00pm & Fri 9.00am-12.00pm

Course enquiries: **024 7668 4331**

Course Title	Course Code	Day	Times	Start	Finish	Weeks	Standard Fee Rate	Over 66s Fee Rate	Go CV Plus Rate	Enrolment Code
Arabic Beginners Plus Conversational - Term 1	CCRC24501A	Tue	6.30-8.30	24/09/24	10/12/24	11	£92.40	£69.30	£19.80	CP
Basic Makaton	CCRC24504A	Tue	6.30-8.30	05/11/24	19/11/24	3	£25.20	£18.90	£10.00	CP
Create your CV	CCRC24506A	Thu	1.00-3.00	10/10/24	17/10/24	2	FREE	FREE	FREE	CP
Do It Online	CCRC24508A	Thu	1.00-3.00	21/11/24	05/12/24	3	FREE	FREE	FREE	CP
Financial Fundamentals for Aspiring Managers	MULT24002	Thu	6.00-8.30	26/09/24	24/10/24	5	FREE	FREE	FREE	MUL
Financial Fundamentals for Aspiring Managers	MULT24011	Thu	6.00-8.30	07/11/24	11/12/24	6	FREE	FREE	FREE	MUL
Introducing AI	CCRC24503A	Thu	1.00-3.00	26/09/24	03/10/24	2	FREE	FREE	FREE	CP
Understand Cloud Storage	CCRC24507A	Thu	1.00-3.00	07/11/24	14/11/24	2	FREE	FREE	FREE	CP

● Earlsdon Methodist Church (EMC) 227 Albany Road, Coventry, CV5 6NF

Office hours: Mon-Fri 8.30am-4.30pm

Course enquiries: **024 7697 5200**

Course Title	Course Code	Day	Times	Start	Finish	Weeks	Standard Fee Rate	Over 66s Fee Rate	Go CV Plus Rate	Enrolment Code
Belly Dancing - Blended	EMC24501A	Wed	7.45-8.45	25/09/24	11/12/24	11	£46.20	£34.65	£10.00	CP
Contemporary Dance	EMC24503A	Wed	6.30-7.30	25/09/24	11/12/24	11	£46.20	£34.65	£10.00	CP
Modern Jazz Performance	EMC24502A	Tue	7.30-8.30	24/09/24	10/12/24	11	£46.20	£34.65	£10.00	CP

● Earlsdon Park Village (EPV) Albany Road, Coventry, CV5 6JQ

Office hours: Mon-Fri 8.30am-1.30pm

Course enquiries: **024 7697 6119**

Course Title	Course Code	Day	Times	Start	Finish	Weeks	Standard Fee Rate	Over 66s Fee Rate	Go CV Plus Rate	Enrolment Code
Art - Higher Intermediate Acrylic Painting	EPV24503A	Wed	6.30-8.30	25/09/24	11/12/24	11	£95.40	£72.30	£21.30	CP
Ballroom and Latin - Beginners Plus	EPV24510A	Thu	7.45-9.15	26/09/24	12/12/24	11	£71.40	£53.55	£15.30	CP
Ballet Improvers	EPV24509A	Tue	7.30-8.30	24/09/24	10/12/24	11	£46.20	£34.65	£10.00	CP
Craft - Intermediate Embroidery	EPV24501A	Mon	10.00-12.00	23/09/24	09/12/24	11	£95.40	£72.30	£21.30	CP
Dance Fusion	EPV24505A	Mon	3.45-4.45	23/09/24	09/12/24	11	£46.20	£34.65	£10.00	CP
Flamenco Dancing	EPV24507A	Mon	6.15-7.15	23/09/24	09/12/24	11	£46.20	£34.65	£10.00	CP
French Improvers -Term 1	EPV24502A	Wed	10.00-12.00	25/09/24	11/12/24	11	£92.40	£69.30	£19.80	CP
Line Dancing Beginners	EPV24504A	Mon	2.30-3.30	23/09/24	09/12/24	11	£46.20	£34.65	£10.00	CP
Line Dancing Improvers	EPV24508A	Tue	6.15-7.15	24/09/24	10/12/24	11	£46.20	£34.65	£10.00	CP
Lyrical Contemporary Dance	EPV24506A	Mon	5.00-6.00	23/09/24	09/12/24	11	£46.20	£34.65	£10.00	CP

● Families for All Family Hub (FL) 454 Foleshill Road, Coventry, CV6 5LB

Office hours: Mon-Thu 8.30am-4.30pm

Course enquiries: **024 7697 8730**

Course Title	Course Code	Day	Times	Start	Finish	Weeks	Standard Fee Rate	Over 66s Fee Rate	Go CV Plus Rate	Enrolment Code
50 Things to do before you're 5 - Stay and Play at Families for All	FL24504	Tue	1.00-3.00	17/09/24	03/12/24	11	FREE	FREE	FREE	CP

● Harmony Family Hub (FL) Clifton Street, Coventry, CV1 5GR

Office hours: Mon-Thu 8.30am-4.30pm

Course enquiries: **024 7697 8730**

Course Title	Course Code	Day	Times	Start	Finish	Weeks	Standard Fee Rate	Over 66s Fee Rate	Go CV Plus Rate	Enrolment Code
50 Things to do before you're 5 - Stay and Play at Harmony	FL24505	Wed	9.30-11.30	18/09/24	04/12/24	11	FREE	FREE	FREE	CP

● Job Shop (JS) West Orchards Shopping Centre, West Orchards Way, Coventry, CV1 1QX

Office hours: Mon-Fri 8.30am-4.30pm

Course enquiries: **024 7697 5200**

Course Title	Course Code	Day	Times	Start	Finish	Weeks	Standard Fee Rate	Over 66s Fee Rate	Go CV Plus Rate	Enrolment Code
*Digital Skills for Beginners	JSC24503A	Thu	9.30-11.30	26/09/24	12/12/24	11	FREE	FREE	FREE	CP
English for Work	JSC24504A	Fri	10.00-12.30	15/11/24	13/12/24	5	FREE	FREE	FREE	CP
Maths Drop-in	JSC24501A	Wed	9.15-11.45	25/09/24	09/07/25	34	FREE	FREE	FREE	CP

● John White Community Centre (JWC) Grange Avenue, Coventry, CV3 2ED

Office hours: Mon-Fri 8.30am-4.30pm

Course enquiries: **024 7697 5200**

Course Title	Course Code	Day	Times	Start	Finish	Weeks	Standard Fee Rate	Over 66s Fee Rate	Go CV Plus Rate	Enrolment Code
Contemporary Dancing	JWC24506A	Thu	4.00-5.00	07/11/24	05/12/24	5	£21.00	£15.75	£10.00	CP
Do It Online	JWC24511A	Fri	10.00-12.00	22/11/24	06/12/24	3	FREE	FREE	FREE	CP
Downloading Apps	JWC24509A	Fri	10.00-12.00	18/10/24	18/10/24	1	FREE	FREE	FREE	CP
Family History - Beginners	JWC24507A	Wed	10.00-12.00	25/09/24	11/12/24	11	£92.40	£69.30	£19.80	CP
Family History - Advanced	JWC24504A	Wed	1.00-3.00	25/09/24	11/12/24	11	£92.40	£69.30	£19.80	CP
Flamenco Dancing	JWC24505A	Thu	5.15-6.15	07/11/24	05/12/24	5	£21.00	£15.75	£10.00	CP
Get to Know your Mobile Phone	JWC24508A	Fri	10.00-12.00	27/09/24	11/10/24	3	FREE	FREE	FREE	CP
Sorting your Ancestry DNA	JWC24502A	Mon	6.30-8.30	23/09/24	09/12/24	11	£92.40	£69.30	£19.80	CP
Spanish Beginners	JWC24501A	Mon	10.00-12.00	23/09/24	09/12/24	11	£92.40	£69.30	£19.80	CP
Spanish Improvers - Term 1 (Hybrid)	JWC24503A	Tue	6.30-8.30	24/09/24	10/12/24	11	£92.40	£69.30	£19.80	CP
What are Comparison Websites?	JWC24510A	Fri	10.00-12.00	08/11/24	15/11/24	2	FREE	FREE	FREE	CP

● Moat Family Hub (FL) Moat House Primary School, Deedmore Road, Coventry, CV2 1EQ

Office hours: Mon-Thu 8.30am-4.30pm

Course enquiries: **024 7697 8730**

Course Title	Course Code	Day	Times	Start	Finish	Weeks	Standard Fee Rate	Over 66s Fee Rate	Go CV Plus Rate	Enrolment Code
50 Things to do before you're 5 - Stay and Play at Moat	FL24506	Wed	1.00-3.00	18/09/24	04/12/24	11	FREE	FREE	FREE	CP

● Moat House Leisure Centre (MH) Winston Avenue, Coventry, CV2 1DX

Office hours: Mon-Fri 8.30am-4.30pm

Course enquiries: **024 7697 5200**

Course Title	Course Code	Day	Times	Start	Finish	Weeks	Course Fee	Exam Fee inc Reg.	Enrolment Code
*Creative Craft (Entry 1) Fabric Craft	MH24002	Mon	1.30-3.30	23/09/24	02/12/24	10	£72.00	N/A	A

● Mosaic Family Hub (FL) Jardine Crescent, Coventry, CV4 9PL

Office hours: Mon-Thu 8.30am-4.30pm

Course enquiries: **024 7697 8730**

Course Title	Course Code	Day	Times	Start	Finish	Weeks	Standard Fee Rate	Over 66s Fee Rate	Go CV Plus Rate	Enrolment Code
50 Things to do before you're 5 - Stay and Play at Mosaic	FL24508	Wed	1.00-3.00	18/09/24	04/12/24	11	FREE	FREE	FREE	CP
Baby Massage at Mosaic Family Hub	FL24515	Wed	9.30-11.30	18/09/24	04/12/24	11	FREE	FREE	FREE	CP

● Online (OL) Office hours: Mon-Fri 8.30am-4.30pm

Course enquiries: **024 7697 5200**

Course Title	Course Code	Day	Times	Start	Finish	Weeks	Standard Fee Rate	Over 66s Fee Rate	Go CV Plus Rate	Enrolment Code
Arabic Reading and Writing Beginners	OL24514A	Wed	1.00-3.00	25/09/24	11/12/24	11	£92.40	£69.30	£19.80	CP
Arabic Advanced Workshop	OL24507A	Wed	6.30-8.30	25/09/24	11/12/24	11	£92.40	£69.30	£19.80	CP
Art - Beautiful Botanicals - Composition & Colour	OL24505A	Tue	7.00-8.30	24/09/24	22/10/24	5	£34.50	£26.63	£11.50	CP
Art - Famous Women Artists Who Have Shaped the Art World	OL24506A	Tue	7.00-8.30	12/11/24	19/11/24	2	£15.60	£12.45	£10.00	CP
Art - In the Style of Monet	OL24512A	Sat	10.30-1.00	30/11/24	30/11/24	1	£8.00	£6.00	£5.00	CP
Art Workshop - Snowy Alpines in Watercolour & Gouache	OL24511A	Sat	10.00-12.00	12/10/24	12/10/24	1	£8.00	£6.00	£5.00	CP
French Culture Intermediate - Term 1	OL24515A	Thu	7.00-9.00	26/09/24	12/12/24	11	£92.40	£69.30	£19.80	CP
Spanish to make a difference - Advanced	OL24501A	Mon	7.45-9.15	23/09/24	09/12/24	11	£69.30	£52.00	£14.85	CP
Music Theory - Foundation Grade 1	OL24504A	Mon	5.00-6.00	16/09/24	09/12/24	12	£96.00	£72.00	£24.00	CP
Music Theory - Foundation Grade 2	OL24503A	Mon	6.15-7.15	16/09/24	14/07/25	34	£272.00	£204.00	£68.00	CP
Music Theory Grade 3/4	OL24502A	Mon	5.00-6.00	16/09/24	14/04/25	34	£272.00	£204.00	£68.00	CP
Course Title	Course Code	Day	Times	Start	Finish	Weeks	Course Fee	Exam Fee inc Reg.	Enrolment Code	
*Level 3 Certificate in Supporting Teaching and Learning in Schools	OL24017	Tue	6.30-9.00	01/10/24	08/07/25	32	FREE	N/A	ST	
*Level 2 Diploma for the Early Years Practitioner	OL24018	Wed	6.30-9.00	09/10/24	16/07/25	32	£700.00	N/A	EY	

● Online Recorded (OL)

Office hours: Mon-Fri 8.30am-4.30pm

Course enquiries: **024 7697 5200**

Course Title	Course Code	Day	Start	Finish	Weeks	Standard Fee Rate	Over 66s Fee Rate	Go CV Plus Rate	Enrolment Code
English in the Primary School - Recorded	FL24511	Email sent each Mon	16/09/24	02/12/24	11	FREE	FREE	FREE	CP
Maths in the Primary School - Recorded	FL24510	Email sent each Mon	16/09/24	02/12/24	11	FREE	FREE	FREE	CP
Positive Family Foundations - Recorded	FL24509	Email sent each Mon	16/09/24	02/12/24	11	FREE	FREE	FREE	CP

● Pathways Family Hub (FL)

Lawrence Saunders Road, Coventry, CV6 1HD

Office hours: Mon-Thu 8.30am-4.30pm

Course enquiries: **024 7697 8730**

Course Title	Course Code	Day	Times	Start	Finish	Weeks	Standard Fee Rate	Over 66s Fee Rate	Go CV Plus Rate	Enrolment Code
50 Things to do before you're 5 - Stay and Play at Pathways	FL24513	Thu	1.00-3.00	19/09/24	05/12/24	11	FREE	FREE	FREE	CP

● Southfields Old School (SOS)

South Street, Coventry, CV1 5EJ

Office hours: Mon-Fri 8.30am-4.30pm (no on site parking)

Course enquiries: **024 7697 5200**

Course Title	Course Code	Day	Times	Start	Finish	Weeks	Standard Fee Rate	Over 66s Fee Rate	Go CV Plus Rate	Enrolment Code
Brush Up Your English Skills	SOS24517A	Mon	9.15-11.45	16/09/24	15/10/24	5	FREE	FREE	FREE	CP
Brush Up Your Maths Skills	SOS24523A	Mon	12.30-3.00	23/09/24	09/12/24	11	FREE	FREE	FREE	CP
Excel at Maths: Learning Maths Through Spreadsheets	MULT24004	Wed	6.00-8.30	06/11/24	11/12/24	6	FREE	FREE	FREE	MUL
Financial Fundamentals for the Self Employed	MULT24003	Mon	6.00-8.30	04/11/24	09/12/24	6	FREE	FREE	FREE	MUL
Financial Well-being Course	MULT24014	Thu	2.00-4.30	26/09/24	24/10/24	6	FREE	FREE	FREE	MUL
French Advanced	SOS24522A	Thu	7.00-9.00	26/09/24	12/12/24	11	£92.40	£69.30	£19.80	CP
Intro to Statistics	MULT24005	Thu								
Introduction to British Sign Language Level 1	SOS24521A	Thu	7.00-9.00	26/09/24	12/12/24	11	£92.40	£69.30	£19.80	CP
Numeracy for the Maths anxious	MULT24013	Wed	6.00-8.30	25/09/24	23/10/24	5	FREE	FREE	FREE	MUL
Numeracy for the Maths anxious	MULT24005	Thu	2.00-4.30	07/11/24	11/12/24	5	FREE	FREE	FREE	MUL
Personal Budgeting: Conquer the Cost of Living	MULT24012	Mon	6.00-8.30	23/09/24	21/10/24	5	FREE	FREE	FREE	MUL
Spanish Beginners	SOS24519A	Wed	7.00-9.00	25/09/24	11/12/24	11	£92.40	£69.30	£19.80	CP
Spanish Beginners Plus	SOS24518A	Thu	7.00-9.00	26/09/24	12/12/24	11	£92.40	£69.30	£19.80	CP
Course Title	Course Code	Day	Times	Start	Finish	Weeks	Course Fee	Exam Fee inc Reg.		Enrolment Code
*British Sign Language Level 2	SOS24024	Wed	6.30-9.00	18/09/24	16/07/25	36	£406.00	N/A		BSL
*Digital Functional Skills Level 1	SOS24008	Tue	6.00-8.30	05/11/24	25/02/25	13	FREE	FREE		DS
*Introduction to Digital Functional Skills Level 1	SOS24007	Tue	6.00-8.30	24/09/24	22/10/24	5	FREE	FREE		DS
*Level 2 Certificate in Supporting Teaching and Learning in Schools	SOS24023	Wed	12.30-3.00	02/10/24	09/07/25	32	£700.00	N/A		ST
*Level 2 Diploma for Early Years Practitioner	SOS24022	Wed	12.30-3.00	09/10/24	16/07/25	32	£700.00	N/A		EY
*Level 3 Diploma for the Early Years Educator	SOS24025	Mon	6.30-9.00	07/10/24	TBC	TBC	£2,500.00			EY

School Street schemes limit the amount of motor traffic in streets surrounding schools for a short time at the start and end of the school day (8.15-9.15am and 3.15-3.45pm) all year round. From September 4, Southfields Old School will fall within one of these areas covering East Street and South Street. Anyone driving on these roads without a valid permit or exemption will be committing an offence and may receive a fixed penalty fine which is currently set at £70.

● St Francis of Assisi (STF)

Links Road, Coventry, CV6 3DQ

Office hours: Mon-Fri 8.30am-4.30pm (no on site parking)

Course enquiries: **024 7697 5200**

Course Title	Course Code	Day	Times	Start	Finish	Weeks	Standard Fee Rate	Over 66s Fee Rate	Go CV Plus Rate	Enrolment Code
Learn to Grow Fruit and Vegetables	STF24501A	Thu	10.00-12.00	26/09/24	12/12/24	11	FREE	FREE	FREE	CP

● Stoke Aldermoor ALC (SAC)

78 Roundhouse Road, Coventry, CV3 1DA

Office hours: Mon-Fri 9.00am-2.30pm

Course enquiries: **024 7697 6766**

Course Title	Course Code	Day	Times	Start	Finish	Weeks	Standard Fee Rate	Over 66s Fee Rate	Go CV Plus Rate	Enrolment Code
Flamenco Dancing	SAC24502A	Wed	11.45-12.45	25/09/24	11/12/24	11	£46.20	£34.65	£10.00	CP
Course Title	Course Code	Day	Times	Start	Finish	Weeks	Course Fee	Exam Fee inc Reg.		Enrolment Code
*Desktop Publishing for Work (Beginners)	SAC24009	Wed	1.00-3.00	06/11/24	11/12/24	6	FREE	FREE		DS
*Digital Skills for Beginners	SAC24007	Wed	10.00-12.00	25/09/24	11/12/24	11	FREE	FREE		DS
*PowerPoint Presentations for Work (Beginners)	SAC24008	Wed	1.00-3.00	25/09/24	23/10/24	5	FREE	FREE		DS

● Stoke Heath Primary School (SHP)

4 Heath Crescent, Coventry, CV2 4PR

Office hours: Mon-Fri 8.30am-4.30pm

Course enquiries: **024 7697 5200**

Course Title	Course Code	Day	Times	Start	Finish	Weeks	Course Fee	Exam Fee inc Reg.	Enrolment Code
Level 2 Certificate in Supporting Teaching and Learning in Schools	SHP24001	Tue	12.30-3.00	08/10/24	15/07/25	32	£700.00	N/A	ST

● Telfer Road Adult Education Centre (TR) 200 Telfer Road, Coventry, CV6 3DR

Office hours: Mon-Thu 8.30am-4.00pm, Fri 8.30am-3.30pm, Mon-Wed eve 5.00-8.45pm

Course enquiries: **024 7697 2527** (Mon-Fri) **024 7697 2876** (Mon-Wed eve)

Course Title	Course Code	Day	Times	Start	Finish	Weeks	Standard Fee Rate	Over 66s Fee Rate	Go CV Plus Rate	Enrolment Code
Brush Up Your English Skills	TR24516A	Tue	9.15-11.45	17/09/24	08/07/25	34	FREE	FREE	FREE	CP
Craft - Get Started with Machine Sewing	TR24510A	Tue	1.00-3.00	24/09/24	10/12/24	11	£95.40	£72.30	£21.30	CP
Craft - Intermediate Patchwork & Quilting	TR24509A	Tue	10.00-12.00	24/09/24	10/12/24	11	£95.40	£72.30	£21.30	CP
Database Basics	TR24513A	Fri	1.00-3.00	27/09/24	25/10/24	5	FREE	FREE	FREE	CP
Do It Online	TR24515A	Fri	1.00-3.00	29/11/24	13/12/24	3	FREE	FREE	FREE	CP
Explore eBay/Vinted/Facebook Marketplace	TR24514A	Fri	1.00-3.00	08/11/24	22/11/24	3	FREE	FREE	FREE	CP
Financial Fundamentals for the Self Employed	MULT24006	Tue	6.00-8.30	25/09/24	23/10/24	5	FREE	FREE	FREE	MUL
Financial Fundamentals for the Self Employed	MULT24015	Tue	6.00-8.30	06/11/24	11/12/24	6	FREE	FREE	FREE	MUL
Financial Well-being Course	MULT24007	Tue	6.00-8.30	24/09/24	23/10/24	5	FREE	FREE	FREE	MUL
German Beginners - Term 1	TR24505A	Mon	6.30-8.30	23/09/24	09/12/24	11	£92.40	£69.30	£19.80	CP
Introduction to British Sign Language Level 1	TR24512A	Wed	10.00-12.00	25/09/24	11/12/24	11	£92.40	£69.30	£19.80	CP
Personal Budgeting: Conquer the Cost of Living	MULT24016	Tue	6.00-8.30	06/11/24	11/12/24	6	FREE	FREE	FREE	MUL
Positive Family Foundations at Telfer Rd	FL24521	Tue	6.00-8.00	17/09/24	03/12/24	11	FREE	FREE	FREE	CP
Positive Family Foundations Secondary at Telfer Rd	FL24517	Tue	6.00-8.00	17/09/24	03/12/24	11	FREE	FREE	FREE	CP
Course Title	Course Code	Day	Times	Start	Finish	Weeks	Course Fee	Exam Fee inc Reg.		Enrolment Code
*Business & Administration - The Basics	TR24033	Tue	10.00-12.00	24/09/24	10/12/24	11	FREE	FREE	FREE	BA
*BYOD - Digital Imagery Using Photoshop (Beginners)	TR24508A	Mon	6.30-8.30	23/09/24	09/12/24	11	£88.00	TBC	TBC	CP
*Customer Service Level 1	TR24011	Wed	9.30-12.00	25/09/24	15/01/25	13	£130.00	£52.00	N/A	CS
*Digital Skills for the Terrified	TR24507A	Mon	1.00-3.00	23/09/24	09/12/24	11	FREE	FREE	FREE	CP
*Digital Function Skills Qualification Entry Level	TR24013	Wed	12.30-3.00	06/11/24	29/01/25	10	FREE	FREE	FREE	DS
*Digital Functional Skills Qualification Level 1	TR24027	Mon	9.30-12.00	04/11/24	24/02/25	13	FREE	FREE	FREE	DS
*Digital Skills for Beginners	TR24030	Thu	10.00-12.00	26/09/24	12/12/24	11	FREE	FREE	FREE	DS
*Digital Skills for Improvers	TR24029	Wed	1.00-3.00	25/09/24	11/12/24	11	FREE	FREE	FREE	DS
*Excel Spreadsheets for Work (Improvers)	TR24031	Fri	10.00-12.00	27/09/24	25/10/24	5	FREE	FREE	FREE	DS
*Introduction to Digital Functional Skills Entry Level	TR24012	Wed	12.30-3.00	25/09/24	23/11/24	5	FREE	FREE	FREE	DS
*Introduction to Digital Functional Skills Level 1	TR24026	Mon	9.30-12.00	23/09/24	21/10/24	5	FREE	FREE	FREE	DS
*Word Processing for Work (Improvers)	TR24032	Fri	10.00-12.00	08/11/24	13/12/24	6	FREE	FREE	FREE	DS

● Tile Hill Library (THL) Jardine Crescent, Coventry, CV4 9PL

Office hours: Mon-Fri 8.45am-1.45pm

Course enquiries: **024 7697 5200**

Course Title	Course Code	Day	Times	Start	Finish	Weeks	Standard Fee Rate	Over 66s Fee Rate	Go CV Plus Rate	Enrolment Code
Art - Foraged, Recycled & Natural Mixed Media	THL24507A	Wed	10.00-12.00	25/09/24	11/12/24	11	£95.40	£72.30	£21.30	CP
Art - Illustrating Nature	THL24508A	Wed	12.45-2.45	25/09/24	11/12/24	11	£95.40	£72.30	£21.30	CP
Craft Workshop - Eco Christmas Crafts	THL24505A	Sat	10.00-1.00	09/11/24	09/11/24	1	£17.60	£14.45	£10.00	CP
Craft Workshop - Fabric Gifts	THL24504A	Sat	10.00-1.00	05/10/24	05/10/24	1	£17.60	£14.45	£10.00	CP
Craft Workshop - Needle Felted Snow-dog	THL24503A	Sat	10.00-2.00	07/12/24	07/12/24	1	£21.80	£17.60	£10.00	CP
Craft Workshop - Quick & Easy Jewellery Making	THL24506A	Sat	10.00-1.00	23/11/24	23/11/24	1	£22.60	£19.45	£12.70	CP
Do It Online	THL24510A	Mon	1.00-3.00	11/11/24	25/11/24	3	FREE	FREE	FREE	CP
Downloading Apps	THL24509A	Mon	1.00-3.00	04/11/24	04/11/24	1	FREE	FREE	FREE	CP
Family History Beginners - Term 1	THL24502A	Fri	1.00-3.00	27/09/24	13/12/24	11	£92.40	£69.30	£19.80	CP
Family History Advanced - Term 1	THL24501A	Fri	10.00-12.00	27/09/24	13/12/24	11	£92.40	£69.30	£19.80	CP
Get to Know your Mobile Phone	THL24502A	Mon	1.00-3.00	07/10/24	21/10/24	3	FREE	FREE	FREE	CP
Introducing AI	THL24511A	Mon	1.00-3.00	02/12/24	09/12/24	2	FREE	FREE	FREE	CP
What are comparison websites	THL24501A	Mon	1.00-3.00	23/09/24	30/09/24	2	FREE	FREE	FREE	CP
Course Title	Course Code	Day	Times	Start	Finish	Weeks	Course Fee	Exam Fee inc Reg.		Enrolment Code
Digital Skills for Improvers	THL24003	Mon	10.00-12.00	23/09/24	09/12/24	11	FREE	FREE	FREE	DS
Touch Typing & Word Processing for Beginners	THL24006	Tue	10.00-12.00	24/09/24	10/12/24	11	FREE	FREE	FREE	DS

● Willenhall Education, Employment & Training Centre (WE) Robin Hood Road, Coventry, CV3 3AN

Office hours: Mon - Fri 8.30am - 4.30pm

Course enquiries: **024 7697 5200**

Course Title	Course Code	Day	Times	Start	Finish	Weeks	Standard Fee Rate	Over 66s Fee Rate	Go CV Plus Rate	Enrolment Code
Grow your own fruit and vegetables	WE24501A	Mon	11.00-1.00	23/09/24	09/12/24	11	FREE	FREE	FREE	CP
Numeracy hacks for a better living	MULT24017	Mon	1.00-3.00	23/09/24	21/10/24	5	FREE	FREE	FREE	MUL
Numeracy hacks for a better living	MULT24018	Mon	1.00-3.00	04/11/24	09/12/24	6	FREE	FREE	FREE	MUL

● Woodside Family Hub (FL) Upper Ride, Coventry, CV3 3GL











Office hours: Mon-Thu 8.30am-4.30pm

Course enquiries: **024 7697 8730**

Course Title	Course Code	Day	Times	Start	Finish	Weeks	Standard Fee Rate	Over 66s Fee Rate	Go CV Plus Rate	Enrolment Code
50 Things to do before you're 5 - Stay and Play at Woodside	FL24519	Tue	9.30-11.30	17/09/24	03/12/24	11	FREE	FREE	FREE	CP

VENUE DETAILS - AUTUMN TERM 2024

Venue contact numbers are only available during term time

VENUE - name and address	CONTACT NUMBER	OFFICE HOURS for enrolment support	SYMBOLS
FL - Aspire Family Hub Humber Avenue, Coventry, CV2 1SF	024 7697 8730	Mon-Thu 8.30am-4.30pm	
BGL - Bell Green Library 17-23 Riley Square, Coventry, CV2 1LS	024 7697 2534	Mon, Tue, Thu & Fri 9.00am-1.30pm	
BSC - Broad Street Centre 161 Broad Street, Coventry, CV6 5BN	024 7697 5502	Mon-Fri 9.00am-3.30pm No onsite parking	
CL - Central Library Smithford Way, Coventry, CV1 1FY	024 7697 5200	Mon-Fri 8.30am-4.30pm	
CCC - Cheylesmore Community Centre 111 Arundel Road, Coventry, CV3 5JL	024 7697 5200	Mon-Fri 8.30am-4.30pm	
FL - Coffee Tots The Wave, New Union Street, Coventry, CV1 2PS	024 7697 8730	Mon-Thu 8.30am-4.30pm	
CCH - Coventry Central Hall Warwick Lane, Coventry, CV1 2HA	024 7697 6766	Mon-Fri 9.00am-1.00pm	
CCRC - Coventry Community Resource Centre Red Lane, Coventry, CV6 5EE	024 7668 4331	Mon-Fri 8.30am-4.30pm	
EMC - Earlsdon Methodist Church 227 Albany Road, Coventry, CV5 6NF	024 7697 5200	Mon-Fri 8.30am-4.30pm	
EPV - Earlsdon Park Village Albany Road, Coventry, CV5 6JQ	024 7697 6119	Mon-Fri 8.30am-1.30pm	
FL - Families for All Family Hub 454 Foleshill Road, Coventry, CV6 5LB	024 7697 8730	Mon-Thu 8.30am-4.30pm	
FL - Harmony Family Hub Clifton Street, Coventry, CV1 5GR	024 7697 8730	Mon-Thu 8.30am-4.30pm	
JS - Job Shop West Orchards Shopping Centre, West Orchards Way, Coventry, CV1 1QX	024 7697 5200	Mon-Fri 8.30am-4.30pm	
JWC - John White Community Centre Grange Avenue, Coventry, CV3 2ED	024 7697 5200	Mon-Fri 8.30-4.30pm	 
FL - Moat Family Hub Moat House Primary School, Deedmore Road, Coventry, CV2 1EQ	024 7697 8730	Mon-Thu 8.30am-4.30pm	
MH - Moat House Leisure Centre Winston Avenue, Coventry, CV2 1DX	024 7697 5200	Mon-Fri 8.30am-4.30pm	 
FL - Mosaic Family Hub Jardine Crescent, Coventry, CV4 9PL	024 7697 8730	Mon-Thu 8.30am-4.30pm	
OL - Online and Online Recorded	024 7697 5200	Mon-Fri 8.30am-4.30pm	
FL - Pathways Family Hub Lawrence Saunders Road, Coventry, CV6 1HD	024 7697 8730	Mon-Thu 8.30am-4.30pm	
SOS - Southfields Old School South Street, Coventry, CV1 5EJ	024 7697 5200	Mon-Fri 8.30am-4.30pm No on-site parking	
STF - St Francis of Assisi Links Road, Coventry, CV6 3DQ	024 7697 5200	Mon-Fri 8.30am-4.30pm	
SAC - Stoke Aldermoor Adult Learning Centre Life Centre, 78 Roundhouse Road, Coventry, CV3 1DA	024 7697 6766	Mon-Fri 9.00am-2.30pm	
SHP - Stoke Heath Primary School 4 Heath Crescent, Coventry, CV2 4PR	024 7697 5200	Mon-Fri 8.30am-4.30pm	
TR - Telfer Road Adult Education Centre 200 Telfer Road, Coventry, CV6 3DR	024 7697 2527 (Mon-Fri) 024 7697 2876 (Mon-Wed eve)	Mon-Thu 8.30am-4.00pm Fri 8.30am-3.30pm Mon-Wed 5.00-8.45pm	 
THL - Tile Hill Library Jardine Crescent, Coventry, CV4 9PL	024 7697 5200	Mon-Fri 8.30am-4.30pm	
WE - Willenhall Education, Employment and Training Centre (WEETC) Robin Hood Road, Coventry, CV3 3AN	024 7697 5200	Mon-Fri 8.30am-4.30pm	
FL - Woodside Family Hub Upper Ride, Coventry, CV3 3GL	024 7697 8730	Mon-Thu 8.30am-4.30pm	



Card payment machine



Parking for Blue Badge holders



Lift

CHOICE

Coventry Adult Education Service

Website: www.coventry.gov.uk/adulted

Telephone: **024 7697 5200**

Email: feedback@covaded.org

www.facebook.com/CoventryAdultEducationService

[@CoventryAdultEd](https://twitter.com/CoventryAdultEd) (X Formerly Twitter)

[@CoventryAdultEducationService](https://www.youtube.com/CoventryAdultEducationService) (YouTube)

AUTUMN TERM 2024 DATES:

ENGLISH, MATHS
16 SEP – 13 DEC

ESOL
23 SEP – 13 DEC

**COMMUNITY
PROGRAMME**
23 SEP – 13 DEC

FAMILY LEARNING
16 SEP – 6 DEC

HALF TERM
28 OCT – 5 NOV

BE SAFE!

Anyone who is being abused, neglected, bullied, groomed, or drawn into extremism or terrorism is not safe.

Do you know what to do if you are not safe, or someone you know is not safe?

- If a child is at risk of harm or neglect, call **024 7678 8555**
- If a vulnerable adult is at risk of harm or neglect, call **024 7683 3003**
- If you think someone is being drawn into radicalisation, extremism or terrorism, tell your tutor or any member of staff in the Adult Education Service
- Talk to your tutor or any Adult Education Service staff member
- See our posters (at venues or on www.covlearn.co.uk) for who to call if a child or adult is at risk
- In an emergency, call **999**

VOLUNTEERS NEEDED IN COVENTRY. WE NEED YOU!

Could you support a learner and become a learning partner?

We need volunteers on a range of courses. You will work alongside a learner or learners under the guidance of a tutor.

For further information please call
024 7697 5200

