

SOCIAL PRESCRIBERS

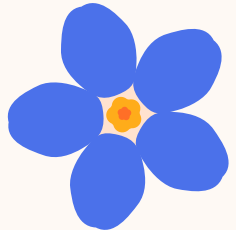
- information on healthy lifestyles and active living.
- Arts, music, outdoor and creative activities.
- Befriending, counselling, and other support groups.
- Meet like minded people and get involved in local groups and activities around what you find interesting.
- Housing issues.
- Welfare, benefits, financial support and advice.
- Access to employment, training and volunteering.
- Education and learning.
- Support for carers in their role.
- Identifying care needs.

COVENTRY TELECARE SERVICES

- are here to discuss equipment that can be provided in the home. Please check the dementia hub website for dates and times.

CARERS TRUST DAY CARE SERVICES - TUESDAYS 10:00am - 3:00pm

Daybreak provides peace of mind to relax and unwind. Activities include singing, quizzes, gentle exercises and games.
please contact
daybreak@carerstrusthofs.org.uk
02476 101040



ROOM HIRES

- DAVE WILLETS
multi purpose room
- BETTY HUNTER
meeting room
- CAROL JENNINGS
consultation room
- BILL WILSON
comfort room
- THE PARTNERSHIP ROOM
- &
- DAYCARE ROOMS

FOR ALL INFORMATION PLEASE CONTACT US ON

02476 978080
www.coventry.gov.uk
CDPH@coventry.gov.uk

*DEMENTIA ACTIVE!!
LOVE TO MOVE.
BRITISH GYMNASTICS FOUNDATION.
1ST FRIDAY OF THE MONTH WITH FIONA COOMBES 11AM - 12PM
ALL WELCOME!*



USE OUR QR CODE TO TAKE YOU STRAIGHT TO THE WEBSITE

Coventry Dementia Partnership Hub



EVERYONE IS WELCOME AT THE COVENTRY DEMENTIA PARTNERSHIP HUB.

WE OFFER THE FOLLOWING SERVICES.....



**Everdon Road,
Holbrooks,
Coventry
CV6 4FB**

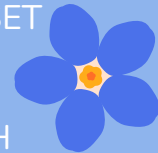
YOUNG ONSET DEMENTIA

Do you or someone you know have young onset dementia?

Would you be interested in accessing our new bespoke YOUNG ONSET DEMENTIA SERVICE?

We also offer an OUTREACH SERVICE to support our community.

For more information
Please contact
CPDH@coventry.gov.uk



COME ALONG TO OUR COFFEE MORNING EVERY WEDNESDAY AT THE COVENTRY DEMENTIA PARTERSHIP HUB HELD IN THE CAFE. MEET THE STAFF AND OTHER PEOPLE LIVING WITH DEMENTIA 10:30am - 12:30pm



forget-me-not-café
Monday - Friday
08:30 - 14:30
A social space where EVERYONE IS WELCOME!!!

FULL BREAKFAST AND LUNCHTIME MENU AVAILABLE



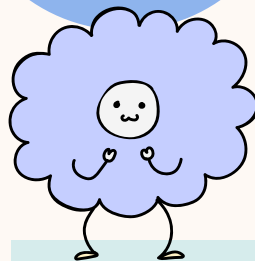
THE DEMENTIA CARE AWARDS WINNER!! - INSPIRATIONAL PERSON LIVING WITH DEMENTIA - DAVE ATKINS - Here at the hub every Wednesday & Thursday 10:30am - 1:00pm.

Dave is living with YOUNG ONSET DEMENTIA. He is here to have a friendly chat, help with any information you may need and a little peace of mind.



RUTH CHAUHAN - MSc (HEALTHCARE ETHICS and LAW) FRSPH Dementia health and well-being specialist: AMBA CARE SOLUTIONS

Ruth offers advice and support, any help completing, any help in application forms, making phone calls, sorting attendance allowance and power of attorney. ALSO fun games, lovely chats and most importantly a listening ear.



HOME INSTEAD 11:00AM- 1PM

Provides home help such as Personal Care, Dementia Care, Parkinsons Care, Light Household Chores, Waking nights through to Live in Care. They Provide talks on scam awareness & nutrition. All your care needs.

FOLESHILL FIRE STATION GREEN WATCH!!

The fire crew will be at the hub to answer any questions about fire safety, home checks and peace of mind. check website for upcoming dates.

WEST MIDLANDS POLICE

Ellie Parry holds a session every month 11:30am-1:30pm. Please see website for dates.

ANGELA HORTON - QUALIFIED NLP Practitioner & Diploma in counselling.

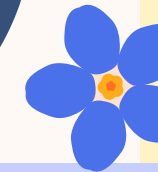
Are you struggling? Angela is available to talk to, about any concerns you may have, an appointment can be made and she will arrange to hire a room at the hub (07752437649)

ADMIRAL NURSES

Sessions every 4 weeks on a Friday 10:00am - 12:00pm All are invited to drop in and discuss Dementia & specific queries that require nurse advice.

DAVID SMITH BENEFITS WELFARE OFFICER

ANY QUERIES REGARDING BENEFITS OR JUST SOME GENERAL ADVICE. FIRST WEDNESDAY OF EVERY MONTH 10:00am - 12:00pm



COUNCILLOR STEPHEN GRAY AND ESTHER REEVES

Drop in sessions on the second Wednesday of each month 11am - 1pm OR if you wish to speak to them privately please get in contact on 07823512321 or Email - esther.reeves@coventry.gov.uk stephen.gray@coventry.gov.uk

Bus route from the city centre (outside Sainsbury's) Route 3/56 to Everdon Road.