



Information Governance Team

Postal Address:
Coventry City Council
PO Box 7097
Coventry
CV6 9SL

www.coventry.gov.uk

E mail: infogov@coventry.gov.uk

Phone: 024 7697 5408

22 May 2026

Dear Sir/Madam

**Freedom of Information Act 2000 (FOIA)/Environmental Information Regulations 2004 (EIR)
Request ID: FOI832374666**

Thank you for your request for information relating to Children's Residential Care Provision.

You have requested the following information:

We are currently undertaking a service development and sufficiency review on behalf of our Children's residential care brand (Daylight Children's Care Services) to better understand local authority sufficiency challenges and inform future service alignment in relation to children's residential care, particularly for children and young people with emotional and behavioural difficulties (EBD), associated mental health needs, and learning needs.

We hold the information which you have asked for, but we have estimated that the cost of meeting your request would exceed the cost limit of £450 specified in the Freedom of Information and Data Protection (Appropriate Limit and Fees Regulations 2004). This represents the estimated cost of one person spending 18 hours or more, in determining whether the information is held, locating, retrieving and extracting it.

The information for Questions 1d, 1e, 3a, 3b, 5b, 7b and 7c are not held in a summary/reportable format. It would therefore require more than 18 hours of manual work by an officer to complete. Your request has been refused under section 12(2) of the Act.

However, in order to fulfil our obligations under Section 16 of the FOI Act to advise and assist you, we advise that provide some information as below:

1. Demand and Placement Profile

a, What is the current number of looked after children placed in children's homes by your

authority?

74.

b. Of these, how many are placed:

o Within your local authority area?

24.

c. Outside of your local authority area?

50.

d. How many children are currently awaiting a residential placement (if applicable)?

This is not held in a reportable format as it is specific to individual children and changing needs (s12 FOI).

e. What are the most common presenting needs requiring residential placements?

This is not held in a reportable format see above (s12 FOI).

2. Out-of-Area Placements

• Does the authority currently place children outside of its local area?

Yes.

• If yes:

o Approximately what percentage of residential placements are out-of-area?

39% of residential placements are out of area.

o What are the primary reasons for out-of-area placements? (e.g. lack of local provision, matching needs, specialist requirements)

Availability of right provision in the right place at the right time to meet an individual child's needs.

• Is there a strategic objective to reduce out-of-area placements?

The information you requested falls under the exemption(s) in Section 21 of the Freedom of Information Act 2000, which relates to 'information reasonably accessible to the applicant by other means.'

The exemption applies as the information is published and publicly available to view by accessing the Council website, please use the following link:

<https://www.coventry.gov.uk/childrens-social-care/homes-children-young-people-coventry-2023-27>

3. Placement Types and Needs

a. What proportion of placements are:

o Emergency placements

o Planned placements

This is not held in a reportable format - see above (s12 FOI). Placements are not categorised in

this way,

b. What level of staffing is most commonly required? (e.g. 1:1, 2:1)

This is not held in a reportable format - see above (s12 FOI).

4. Spend and Cost

• What was the total spend on children's residential care placements in the last financial year?

£25.7m for 25/26 includes internal and external residential children's homes

• What is the approximate average weekly cost of:

o Standard residential placements -

We only have data on overall average - £8,371 per week for 25/26 (external residential placements).

o Higher-support placements (e.g. 1:1 or 2:1) -

We only have data on overall average £8,371 per week for 25/26 (external residential placements).

5. Provider Market and Sufficiency

a. How many residential care providers does the authority currently use?

As of 21st May 2026 Coventry City Council are using 38 providers.

b. Are there any identified gaps in provision? If so, please specify (e.g. EBD, mental health, smaller homes, crisis placements).

This is not held in a reportable format - see above (s12 FOI).

• Does the authority have a current sufficiency strategy or commissioning plan for children's residential care? If so, please provide a copy or link.

[https://www.coventry.gov.uk/childrens social care/homes children young people coventry 2023 27](https://www.coventry.gov.uk/childrens-social-care/homes-children-young-people-coventry-2023-27)

6. Commissioning and Access

• How does the authority source residential placements? (e.g. framework agreements, dynamic purchasing systems, spot purchasing)

Internal provision, framework agreements and spot purchasing where necessary.

• Which frameworks or systems are currently in use?

[https://www.find tender.service.gov.uk/Notice/057451 2025?](https://www.find-tender.service.gov.uk/Notice/057451-2025)

• Is the authority currently open to onboarding new providers? If so, via which route?

Via the WM regional framework when it re-opens

7. Quality and Outcomes

a. What are the key factors considered when selecting a residential placement provider?

This falls outside the scope of an FOI as it is seeking an opinion which is not recorded.

b. What are the most common reasons for placement breakdown?

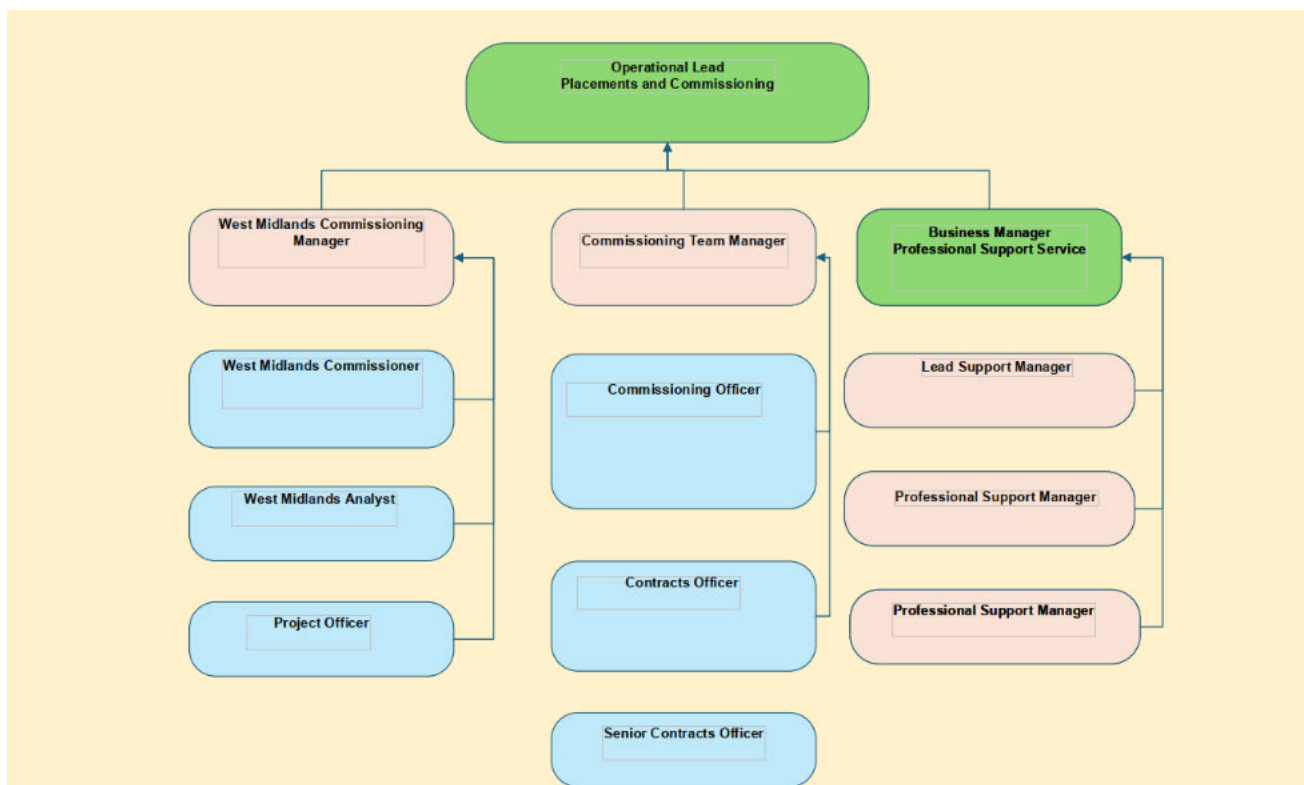
This is not held in a reportable format see above (s12 FOI).

c. What outcomes are most important when assessing placement success?

We do not record this information in a reportable format, a manual trawl would be required S12 to be applied

8. Contact and Structure

• Please provide the structure of the team responsible for commissioning or placing children into residential care.



• Please provide a generic contact email or central point of contact for placement enquiries.

email: ChildrensPlacements@coventry.gov.uk

The supply of information in response to a FOI/EIR request does not confer an automatic right to re use the information. You can use any information supplied for the purposes of private study and non-commercial research without requiring further permission. Similarly, information supplied can

also be re-used for the purposes of news reporting. An exception to this is photographs. Please contact us if you wish to use the information for any other purpose.

For information, we publish a variety of information such as: [FOI/EIR Disclosure Log](#), [Publication Scheme](#), [Facts about Coventry](#) and [Open Data](#) that you may find of useful if you are looking for information in the future.

If you are unhappy with the handling of your request, you can ask us to review our response. Requests for reviews should be submitted within 40 days of the date of receipt of our response to your original request email: infogov@coventry.gov.uk

If you are unhappy with the outcome of our review, you can write to the Information Commissioner, who can be contacted at: Information Commissioner's Office, Wycliffe House, Water Lane, Wilmslow, Cheshire, SK9 5AF or email icocasework@ico.org.uk.

Please remember to quote the reference number above in your response.

Yours faithfully

Information Governance