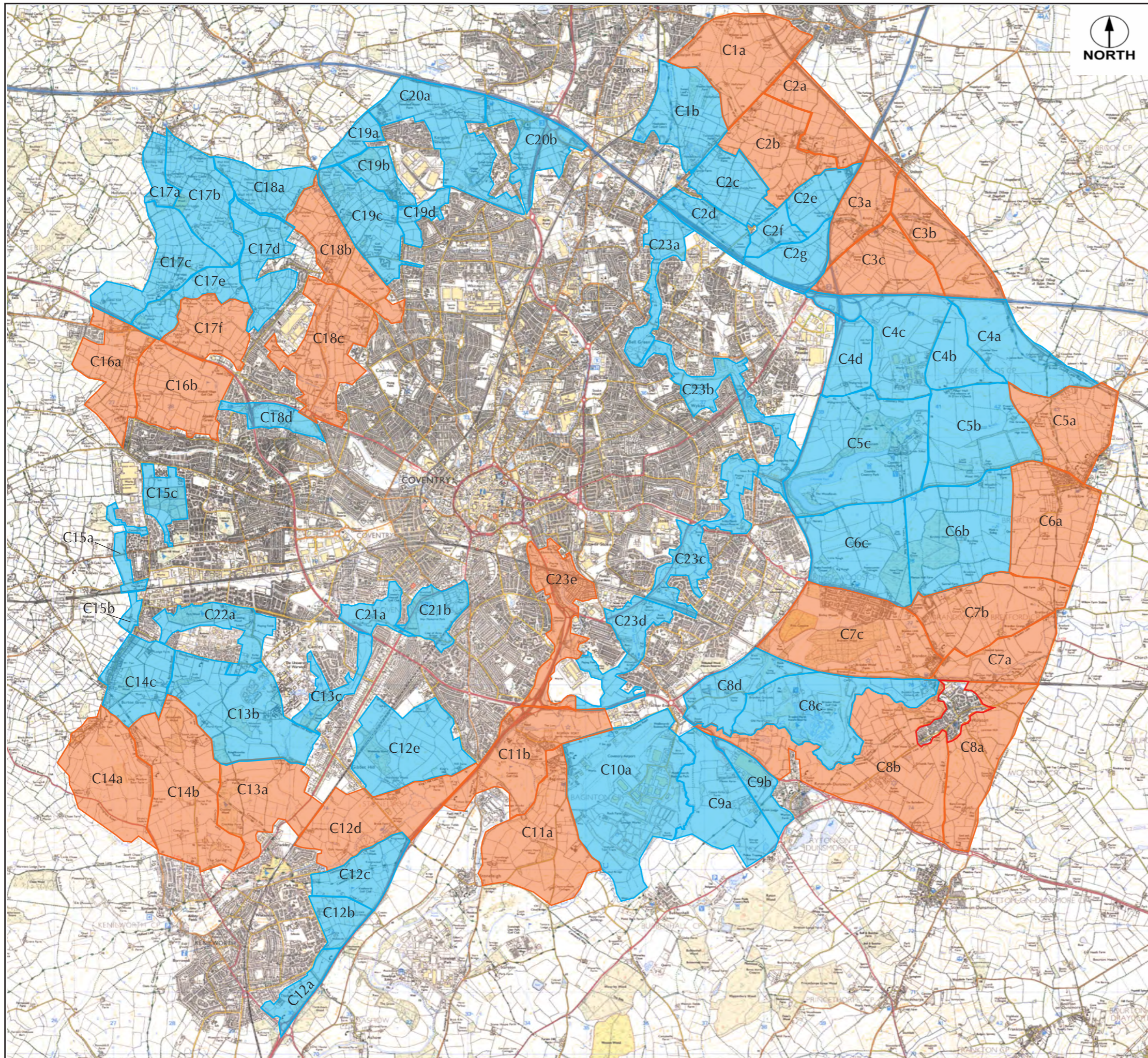


## Appendix 4 – Parcels to be Retained & Parcels to be Taken Forward for Detailed Study

- Figure 3.1: Coventry
- Figure 3.2: Kenilworth
- Figure 3.3: Nuneaton and Bedworth
- Figure 3.4: Warwick and Leamington



# COVENTRY

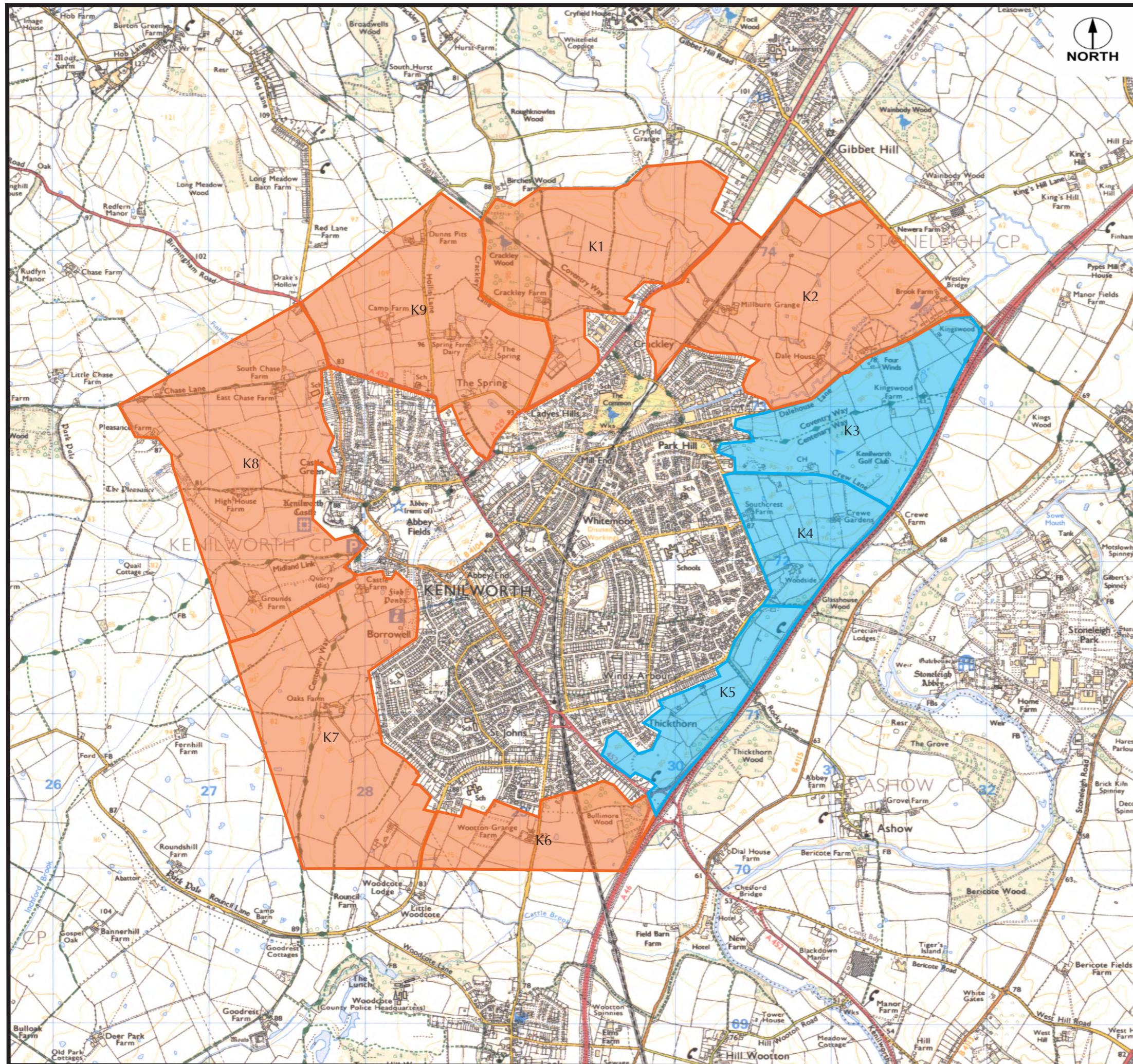
PPG2 Purposes

## LEGEND

- Retain in Green Belt
- Consider for Detailed Study

Figure 3.1

Reproduced from the Ordnance Survey map by permission of Ordnance Survey on behalf of The Controller of Her Majesty's Stationery Office, © Crown Copyright. Licence No. 100012747. FOR IDENTIFICATION PURPOSES ONLY.



# KENILWORTH

PPG2 Purposes

## LEGEND

- Retain in Green Belt
- Consider for Detailed Study



Figure 3.2

Reproduced from the Ordnance Survey map by permission of Ordnance Survey on behalf of The Controller of Her Majesty's Stationery Office, © Crown Copyright. Licence No. 100012747. FOR IDENTIFICATION PURPOSES ONLY.

# NUNEATON & BEDWORTH

PPG2 Purposes

## LEGEND

-  - Retain in Green Belt
-  - Consider for Detailed Study

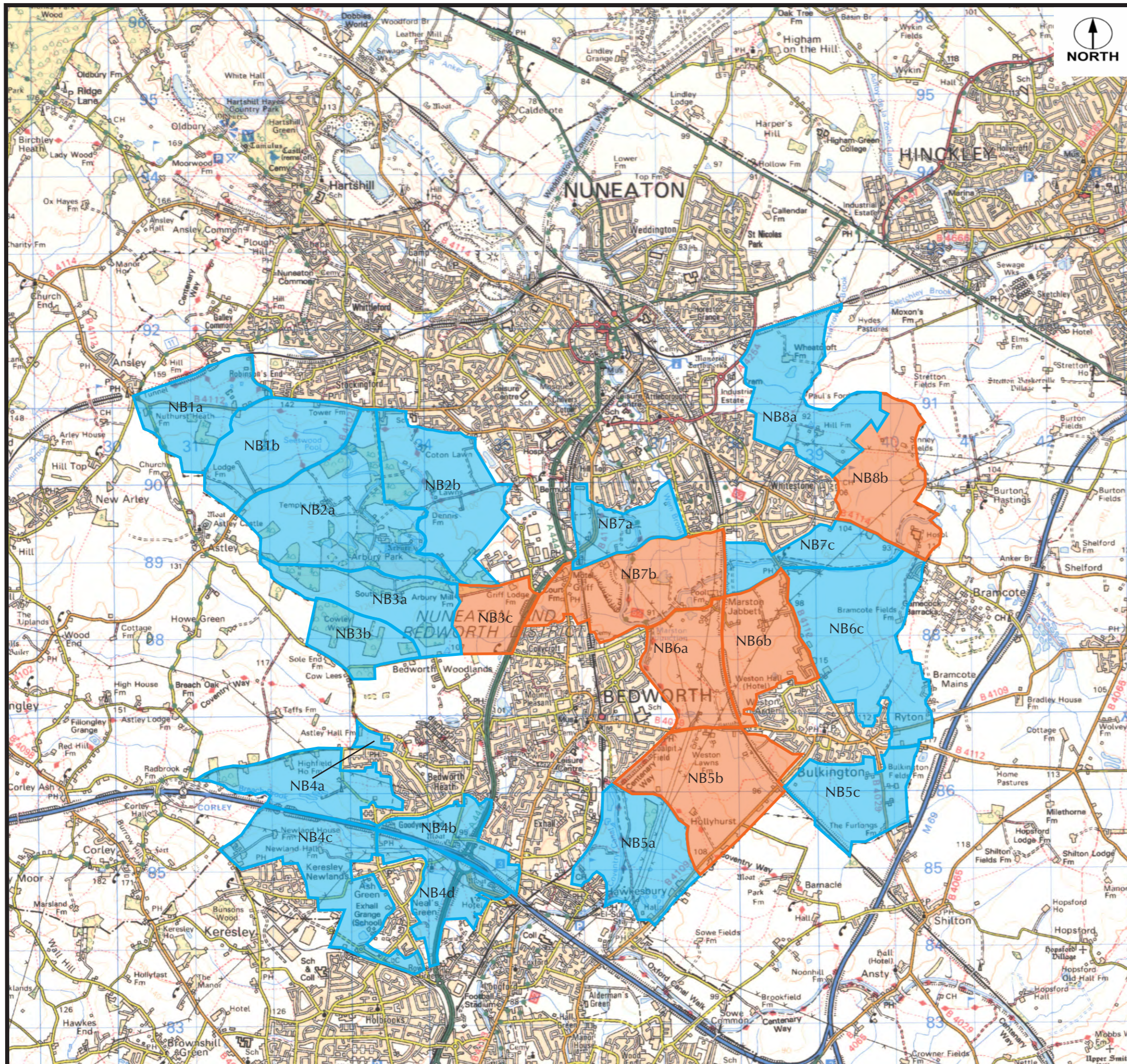
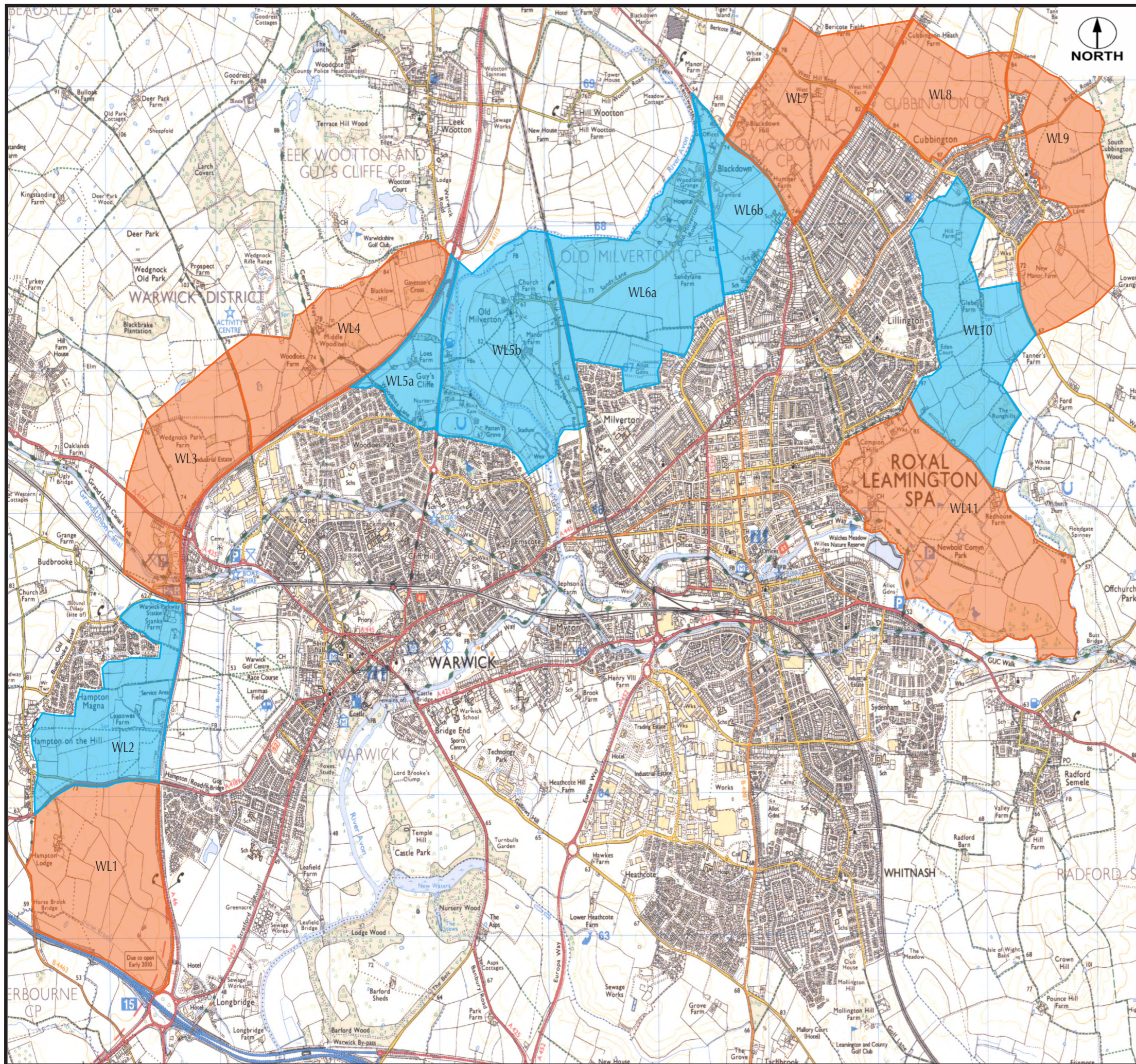


Figure 3.3

Reproduced from the Ordnance Survey map by permission of Ordnance Survey on behalf of The Controller of Her Majesty's Stationery Office, © Crown Copyright. Licence No. 100012747. FOR IDENTIFICATION PURPOSES ONLY.



# WARWICK & LEAMINGTON SPA

PPG2 Purposes

## LEGEND

- Retain in Green Belt
- Consider for Detailed Study

Figure 3.4

Reproduced from the Ordnance Survey map by permission of Ordnance Survey on behalf of The Controller of Her Majesty's Stationery Office, © Crown Copyright. Licence No. 100012747. FOR IDENTIFICATION PURPOSES ONLY.